

SMUGGLER CARBON GX



The Carbon Smuggler GX sits right in the middle of our lineup with a rock solid spec for those looking to save some money but don't want to compromise on performance. We don't skip on the suspension and give you the perfectly tuned Fox DPS inline rear shock paired with a top of class Fox Float 36 Performance fork to handle the rough stuff up front. SRAM Guide R brakes control the 29" wheels and have incredible modulation while the GX eagle with 10-50t rear cassette give you all the gear range you will ever need. A Stans Arch S1 Team wheelset with Maxxis Minion 3C tires balance durability with traction and control to give you confidence on any type of trail.

AVAILABLE COLORS: CARBON BLACK POWDER OUTLAW ORANGE

\$4,999.00 USD

SELECT YOUR SIZE & COLOR:

SMALL/OUTLAW ORANGE ▼

[ADD TO CART](#)

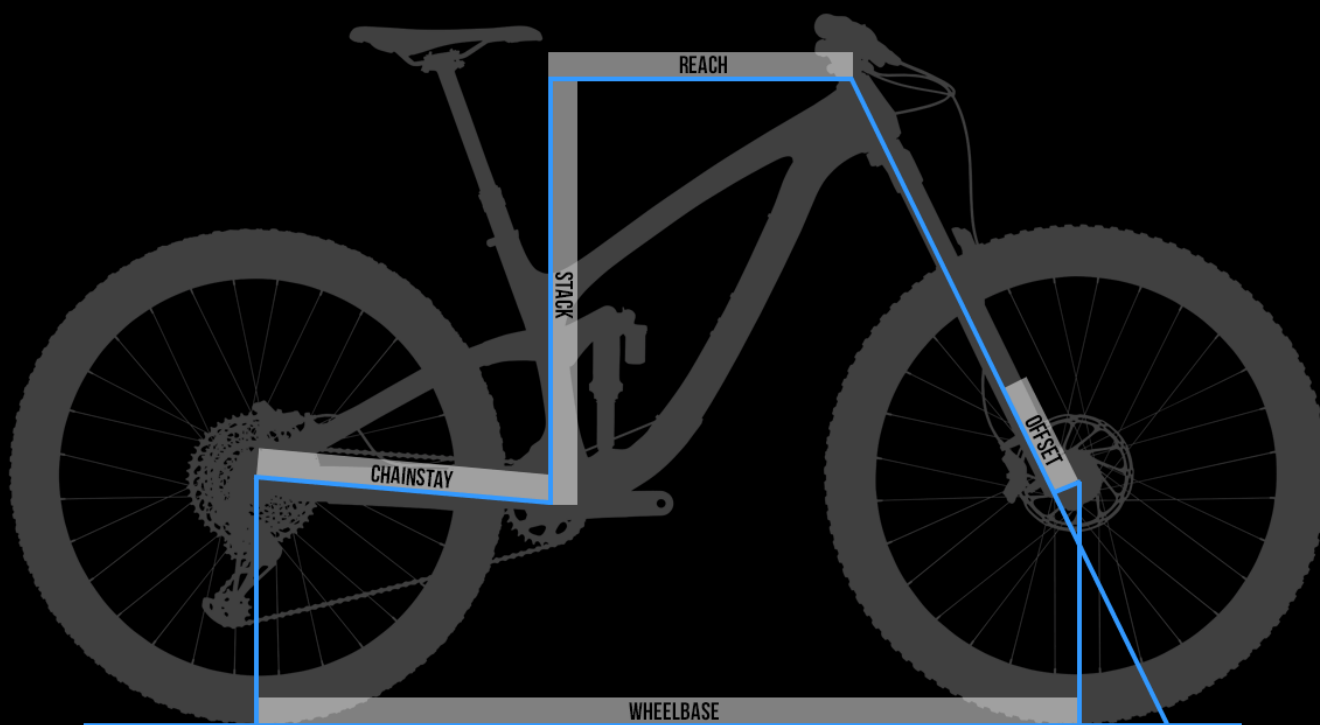
[FIND A DEALER](#)

IN STOCK:

This item will ship within 2 business days

	Smuggler Carbon X01	Smuggler Carbon GX	Smuggler Carbon NX
PRICE	\$5999 USD	\$4999 USD	\$3999 USD
FRAME	Smuggler Carbon 120mm Rear/140mm Front	Smuggler Carbon 120mm Rear/140mm Front	Smuggler Carbon 120mm Rear/140mm Front
REAR SHOCK	Fox DPS Performance Elite	Fox DPS Performance Elite	RockShox Deluxe RT
FORK	Fox Float 36 Grip 2 Performance Elite [140mm]	Fox Float 36 Grip Performance [140mm]	Rockshox Revelation RC 140mm
HEADSET	Cane Creek 40 Series	FSA No.57E	FSA No.57E
STEM	ANVL Swage (40mm)	RaceFace Aeffect R (40mm)	RaceFace Aeffect R (40mm)
HANDLEBAR	ANVL Mandrel Alloy 35 SM/MD (800 x 20mm) LG/XL (800 x 30mm)	RaceFace Chester 35 SM/MD (780 x 20mm) LG/XL (780 x 35mm)	RaceFace Chester 35 SM/MD (780 x 20mm) LG/XL (780 x 35mm)
GRIPS	ODI Elite Flow	ODI Elite Flow	Velo VLG-1812D2
SADDLE	ANVL Forge Ti	ANVL Forge Cromo	WTB Silverado Comp
SEATPOST	RockShox Reverb Stealth 1x Remote SM (100mm) MD (125mm) LG (150mm) XL (170mm)	RockShox Reverb Stealth SM (100mm) MD (125mm) LG (150mm) XL (170mm)	RaceFace Aeffect Dropper SM/MD (125mm) LG/XL (150mm)
BRAKES	SRAM Guide RSC	SRAM Guide R	SRAM Level T
ROTOR	SRAM Centerline (180mm)	SRAM Centerline (180mm)	SRAM Centerline (180mm)
SHIFTER	SRAM X01 Eagle	SRAM GX Eagle	SRAM NX Eagle

DERAILLEUR	SRAM X01 Eagle	SRAM GX Eagle	SRAM NX Eagle
CASSETTE	SRAM XG 1275 (10-50t)	SRAM XG 1275 (10-50t)	SRAM PG 1230 (11-50t)
CHAIN	SRAM GX Eagle	SRAM GX Eagle	SRAM NX Eagle
CRANK	SRAM X1 Carbon DUB (170mm x 30t)	SRAM Stylo 7K DUB (170mm x 30t)	SRAM NX Eagle DUB (170mm x 30t)
WHEELSET	Stans Arch MK3 Pro	Stans Arch S1 Team	WTB STi25/Novatech D791SB/D462SB
TIRE/FRONT	Maxxis Minion DHF 3C WT (29x2.3)	Maxxis Minion DHF 3C WT (29x2.3)	Maxxis Minion DHF Dual WT (29x2.3)
TIRE/REAR	Maxxis Minion DHR11 3C (29x2.3)	Maxxis Minion DHR11 3C (29x2.3)	Maxxis Minion DHR11 Dual (29x2.3)
WEIGHT	28.63 lbs / 12.99 kg	29.27 lbs / 13.28 kg	30.9 lbs / 14.02 kg
	VIEW BIKE		VIEW BIKE



SPEED BALANCED GEOMETRY

SBG ensures the bike maintains low speed agility, front wheel traction, and proper rider weight balance while actually increasing confidence in steep terrain and at high speeds. With SBG, a slacker head tube angle is combined with a all new reduced offset fork

standard, preventing the front wheel from being too far in front of the rider. This improves front to rear weight distribution on the bike, which is often out of balance on long and slack bikes. One of SBG's greatest benefits is that it creates a confident steering feel that adapts to wheel speed. More stability when going fast, more agility on technical slow speed maneuvering as well as improved traction, control and confidence for any skill level of rider.

[LEARN MORE ABOUT SBG](#)

	SM	MD	LG	XL
REACH	425	450	475	500
STACK	615	615	624	633
EFFECTIVE TT LENGTH	571	596	625	653
SEAT TUBE LENGTH	400	410	450	495
EFFECTIVE ST ANGLE	77	76.3	75.8	75.3
HEAD TUBE LENGTH	100	100	110	120
HEAD TUBE ANGLE	66.0	66.0	66.0	66.0
CHAINSTAY LENGTH	430	430	430	430
WHEELBASE	1159	1184	1213	1242
BOTTOM BRACKET DROP	35	35	35	35
ESTIMATED BB HEIGHT	340	340	340	340
STAND OVER HEIGHT	688	695	705	720
FORK OFFSET	43	43	43	43
INEFFECTIVE TOPTUBE*	1.442	1.523	1.604	1.685
DOWNTUBE ANGLE	60	60	60	60
STANCE**	680	680	680	680
ROCKER EYE TO EYE	160	160	160	160

[CHECK OUT OUR SIZING GUIDE](#)

*Measured In Parsecs

**Size 9 Foot (Measured In Flip Flops)

GIDDYUP 2.0HH SUSPENSION

Take our successful GiddyUp suspension system, add one part increased pedaling efficiency, two parts wider sag range, and three parts increased small bump sensitivity, and you get GiddyUp 2.0HH. Incredible pedaling performance balanced with a superb neutral, comfortable and fun feel that we're known for.

We specifically tuned the suspension with a moderate amount of chain growth which is highest at the sag point and decreasing deeper into the travel. Because of this finely tuned wheel path, there is a notable increase in traction when climbing, without the rider noticing the chain growth fighting the suspension movement.

GiddyUp 2.0HH is extremely easy to setup and it provides excellent support throughout the entire stroke of the shock so you can use all your travel without worrying about bottom out. Designed to be active while climbing, rear shock climbing platforms are not necessary. The suspension remains free to smooth out the trail, improve traction and control without sacrificing efficiency. With GiddyUp 2.0HH you can focus on the trail, no remotes, levers or knobs. Just grab your bike and GiddyUp.



Where's my carbon Smuggler!?

by TransitionBikeCompany

pb **pinbike**

"THE SMUGGLER IS ALL ABOUT FUN, FIRST AND FOREMOST. IT'S A BIKE THAT ENCOURAGES ITS RIDER TO GOOF OFF, WHETHER THAT'S BY SEEING HOW MANY MID-TRAIL MANUALS YOU CAN PULL, OR TRYING TO FIND OUT JUST HOW HARD YOU CAN SMASH INTO A BERMED CORNER. SURE, YOU CAN'T GO ROCKETING FULL BLAST INTO A MINEFIELD OF ROCKS AND EXPECT TO COME OUT THE OTHER SIDE AS EASILY AS YOU WOULD ON AN ENDURO RACE MACHINE, BUT THAT'S NOT WHAT THIS BIKE IS ALL ABOUT. INSTEAD, IT'S ABOUT FINDING THE BONUS LINES, THE HIDDEN LIPS AND LANDINGS THAT MAKE A FAMILIAR TRAIL EVEN MORE ENTERTAINING. "

- MIKE KAZIMER/PINBIKE.COM [CLICK HERE FOR THE FULL REVIEW](#)

bike

"TRANSITION TRAIL BIKES HAVE BECOME KNOWN FOR THEIR AGGRESSIVE, DESCENDING-ORIENTED HANDLING AND THE SMUGGLER RINGS TRUE IN THAT REGARD. SIMPLY GET THE SMUGGLER UP TO SPEED AND IT CHARGES THROUGH ROUGH TERRAIN WITH THE STABILITY AND EASE OF A BIKE WITH CONSIDERABLY MORE TRAVEL." - THE BIKE BIBLE REVIEW [CLICK HERE FOR THE FULL REVIEW](#)



CAM BURNES (US/CANADA DEALER SALES) SMUGGLER X01



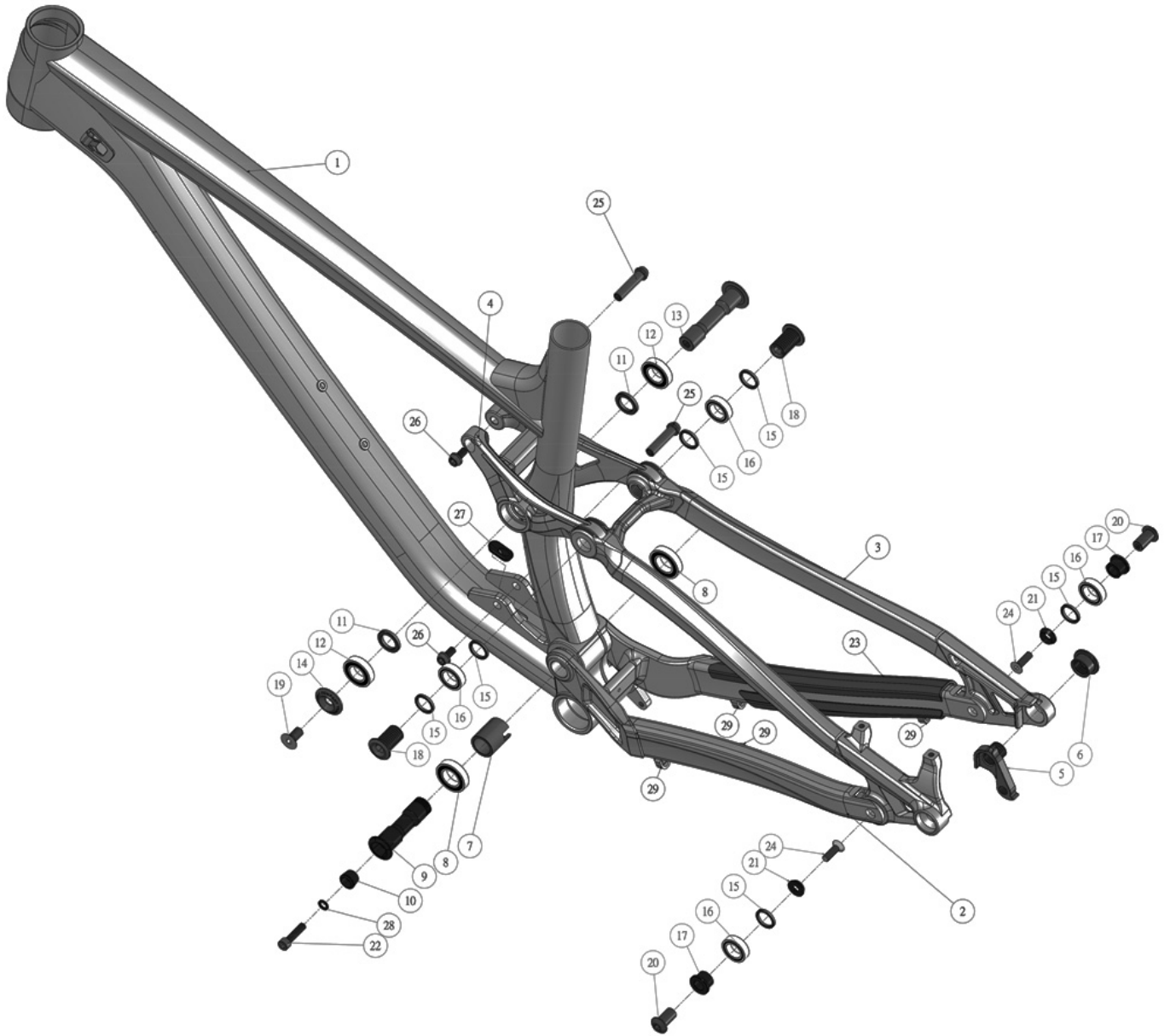
FRAME FEATURES

[DOWNLOAD FRAME EXPLODED VIEW](#)

[SUSPENSION SETUP GUIDE](#)

FORK AXLE TO CROWN	551mm
FORK OFFSET	42mm (Rockshox) / 44mm (Fox)
REAR SHOCK SIZE	210mm x 50mm
REAR SHOCK HARDWARE	30mm x 8mm Top / 25mm x 8mm Bottom
HEADSET	44mm Zero Stack (Top) / 56mm Zero Stack (Bottom)
BOTTOM BRACKET	73mm BSA Threaded
REAR BRAKE	180mm Post Mount

REAR AXLE	Syntace X12 148
FRONT DERAILLEUR	No Support
ISCG TABS	ISCG05
SEATPOST DIAMETER	31.6mm
MAX SEATPOST INSERTION ALLOY	Small 150mm, Medium 160mm, Large 200mm, XL 245mm
MAX SEATPOST INSERTION CARBON	Small 165mm, Medium 175mm, Large 215mm, XL 245mm
SEAT CLAMP SIZE	Alloy 34.9mm/Carbon 37mm
MAXIMUM CHAINRING	34t
MAXIMUM TIRE	29 x 2.4
SAG SETUP	16-17mm (32-35%)
FRAME WEIGHT (Medium with Shock/Axle/Hardware)	Carbon 6.61 lbs - 3.0 kg
WARRANTY	3 YEAR WE GOT YOUR BACK WARRANTY



ABOUT US
FACTORY STORE

TRANSITION BICYCLE COMPANY
1600 Carolina Street
Bellingham, WA 98229

(360) 366-4960

info@transitionbikes.com

BIKES

TR11

SENTINEL

PATROL

SCOUT

SMUGGLER

THROTTLE

VANQUISH

RIPCORD

PBJ

COMPONENTS

STEMS

SADDLES

HANDLEBARS

GRIPS

PEDALS

GEAR

CLOTHING

ACCESSORIES

SUPPORT PARTS

USED DEMO BIKES

DEMO

SCHEDULE A FACTORY DEMO

DEMO EVENTS

DEALERS

FIND A DEALER

INTERNATIONAL DISTRIBUTORS

SUPPORT

BIKE ARCHIVE

WARRANTY

REGISTER YOUR BIKE

TERMS & CONDITIONS

RETURN POLICY