

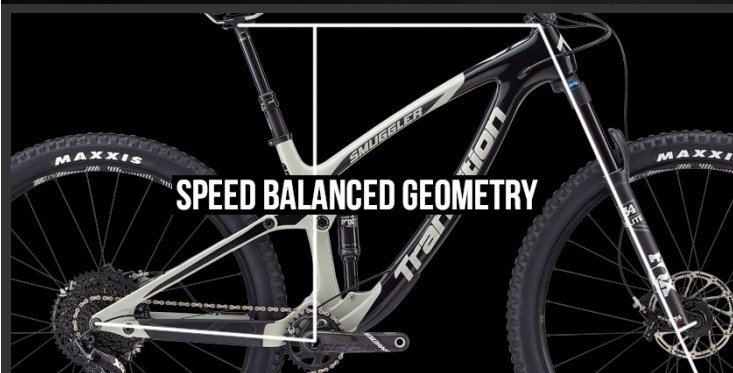


"ADVENTURE ON EVERY RIDE"

SMUGGLER

120MM REAR / 140MM FRONT / 29" WHEELS

We absolutely love 29er trail bikes and the Smuggler is our vision of the perfect do-it-all trail bike. Just the right amount of travel front and rear to keep it responsive and fun but also aggressive for when the trail turns downright nasty. We know on a long ride that you can encounter just about every type of terrain and obstacle, so we designed the Smuggler to not only adapt to trail conditions but downright own them. Our Speed Balanced Geometry is the final touch designed to maintain traction and control on the way up while keeping you composed and confident on ultra technical descents.



SPEED BALANCED GEOMETRY



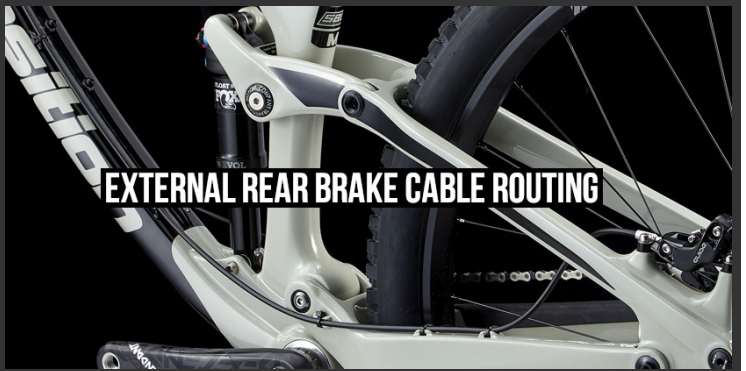
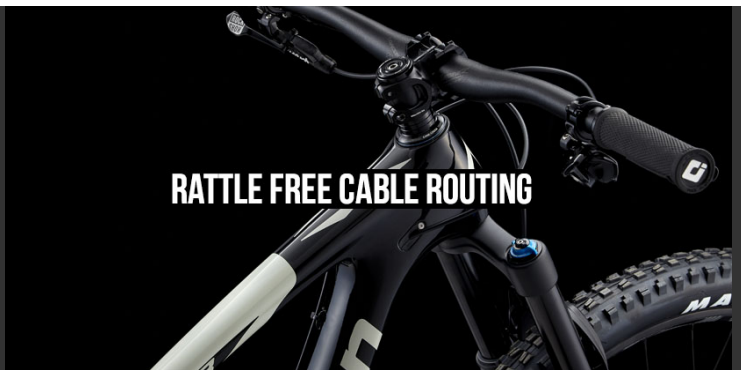
GIDDYUP 2.0HH SUSPENSION



MOLDED RUBBER FRAME PROTECTION

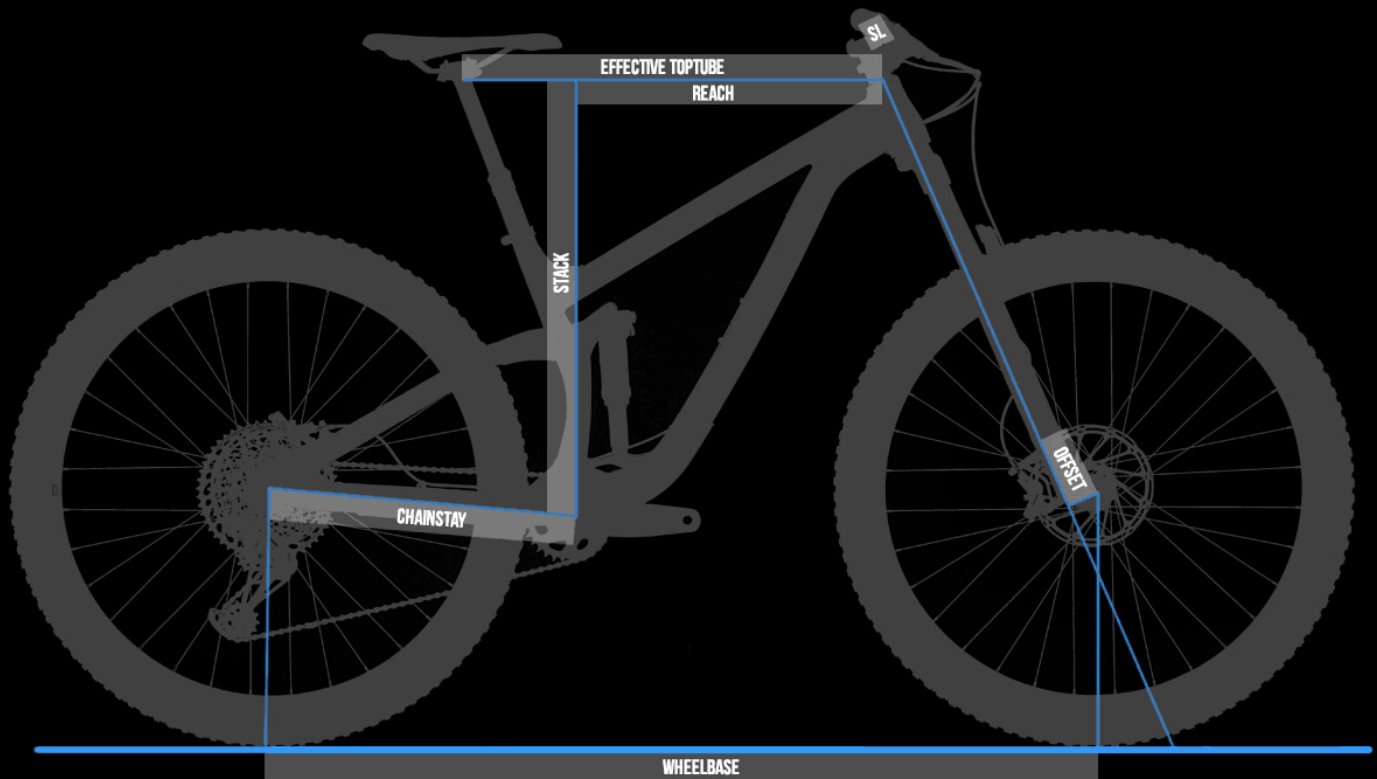


ENDURO MAX BEARINGS



bike

"TRANSITION TRAIL BIKES HAVE BECOME KNOWN FOR THEIR AGGRESSIVE, DESCENDING-ORIENTED HANDLING AND THE SMUGGLER RINGS TRUE IN THAT REGARD. SIMPLY GET THE SMUGGLER UP TO SPEED AND IT CHARGES THROUGH ROUGH TERRAIN WITH THE STABILITY AND EASE OF A BIKE WITH CONSIDERABLY MORE TRAVEL." - THE BIKE BIBLE REVIEW [CLICK HERE FOR THE FULL REVIEW](#)



SPEED BALANCED GEOMETRY

SBG ensures the bike maintains low speed agility, front wheel traction, and proper rider weight balance while actually increasing confidence in steep terrain and at high speeds. With SBG, a slacker head tube angle is combined with a all new reduced offset fork standard, preventing the front wheel from being too far in front of the rider. This improves front to rear weight distribution on the bike, which is often out of balance on long and slack bikes. One of SBG's greatest benefits is that it creates a confident steering feel that adapts to wheel speed. More stability when going fast, more agility on technical slow speed maneuvering as well as improved traction, control and confidence for any skill level of rider.

[LEARN MORE ABOUT SBG](#)

SM

MD

LG

XL

REACH	425	450	475	500
STACK	615	615	624	633
EFFECTIVE TT LENGTH	571	596	625	653
SEAT TUBE LENGTH	400	410	450	495
EFFECTIVE ST ANGLE	77	76.3	75.8	75.3
HEAD TUBE LENGTH	100	100	110	120
HEAD TUBE ANGLE	66.0	66.0	66.0	66.0
CHAINSTAY LENGTH	430	430	430	430
WHEELBASE	1159	1184	1213	1242
BOTTOM BRACKET DROP	35	35	35	35
ESTIMATED BB HEIGHT	340	340	340	340
STAND OVER HEIGHT	688	695	705	720
FORK OFFSET	43	43	43	43
CHECK OUT OUR SIZING GUIDE				



BUILD THE SMUGGLER

FRAME: ☒ CARBON ☐ ALLOY

SPEC: ☒ X01 ☐ GX ☐ NX ☐ FRAME ONLY

COLOR: ☒ BONE GREY ☐ GUNSMOKE BLUE

PRICE: \$5,999 [FIND A DEALER](#) [BUY ON OUR STORE](#)

	X01 CARBON	X01 ALLOY	GX CARBON	GX ALLOY	NX ALLOY
PRICE	\$5999 USD	\$4999 USD	\$4999 USD	\$3999 USD	\$2999 USD
COLOR	Bone Grey, Gunsmoke Blue	Bone Grey, Gunsmoke Blue	Bone Grey, Gunsmoke Blue	Bone Grey, Gunsmoke Blue	Bone Grey, Gunsmoke Blue
REAR SHOCK	Fox DPS Performance Elite	Fox DPS Performance Elite	Fox DPS Performance Elite	Fox DPS Performance Elite	RockShox Deluxe RT
FORK	Fox 34 Float Fit 4 Performance Elite 140mm	Fox 34 Float Fit 4 Performance Elite 140mm	Fox 34 Float Grip Performance 140mm	Fox 34 Float Grip Performance 140mm	RockShox Revelation RC Solo Air 140mm
HEADSET	Cane Creek 40 Series	Cane Creek 40 Series	FSA No.57E	FSA No.57E	FSA No.57E
STEM	RaceFace Turbine R 35 (40mm)	RaceFace Turbine R 35 (40mm)	RaceFace Aeffect R (40mm)	RaceFace Aeffect R (40mm)	RaceFace Aeffect R (40mm)
BAR	RaceFace Turbine R 35 (800mm x 20mm)	RaceFace Turbine R 35 (800mm x 20mm)	RaceFace Aeffect R (780mm x 20mm)	RaceFace Aeffect R (780mm x 20mm)	RaceFace Chester 35 (780mm x 20mm)

GRIPS	ODI Elite Flow	ODI Elite Flow	Velo Single Clamp	Velo Single Clamp	Velo Single Clamp
SADDLE	ANVL Forge Stealth Cromo	ANVL Forge Stealth Cromo	ANVL Forge Stealth Cromo	ANVL Forge Stealth Cromo	WTB Volt Comp
SEATPOST	RockShox Reverb Stealth 1x Remote	RockShox Reverb Stealth 1x Remote	RockShox Reverb Stealth	RockShox Reverb Stealth	RaceFace Aeffect Dropper
BRAKES	SRAM Guide RSC	SRAM Guide RSC	SRAM Guide R	SRAM Guide R	SRAM Level T
ROTORS	SRAM Centerline [180mm]	SRAM Centerline [180mm]	SRAM Centerline [180mm]	SRAM Centerline [180mm]	SRAM Centerline [180mm]
SHIFTER	SRAM X01 Eagle	SRAM X01 Eagle	SRAM GX Eagle	SRAM GX Eagle	SRAM NX
DERAILLEUR	SRAM X01 Eagle	SRAM X01 Eagle	SRAM GX Eagle	SRAM GX Eagle	SRAM NX
CASSETTE	SRAM XG 1275 [10-50t]	SRAM XG 1275 [10-50t]	SRAM XG 1275 [10-50t]	SRAM XG 1275 [10-50t]	SRAM PG 1130 [11-42t]
CHAIN	SRAM GX Eagle	SRAM GX Eagle	SRAM GX Eagle	SRAM GX Eagle	SRAM PC 1110
CRANK	SRAM Descendent Carbon [30t, 170mm]	SRAM Descendent Carbon [30t, 170mm]	SRAM Descendent 6K [30t, 170mm]	SRAM Descendent 6K [30t, 170mm]	RaceFace Aeffect [28t, 170mm]
RIMS	E*Thirteen TRS+ 30mm	E*Thirteen TRS+ 30mm	E*Thirteen TRS 30mm	E*Thirteen TRS 30mm	WTB STPi29
HUBS	E*Thirteen TRS+	E*Thirteen TRS+	Novatec D711SB & D462SB XD	Novatec D711SB & D462SB XD	Novatec D711SB & D462SB
TIRES	Maxxis Minion DHF / DHR II 2.3 EXO 3C	Maxxis Minion DHF / DHR II 2.3 EXO 3C	Maxxis Minion DHF / DHR II 2.3 EXO Dual	Maxxis Minion DHF / DHR II 2.3 EXO Dual	Maxxis Minion DHF / DHR II 2.3 EXO Dual
WEIGHT	28.8 lbs. / 13.06 Kg	31.1 lbs. / 14.11 Kg	29.2 lbs. / 13.24 Kg	31.5 lbs. / 14.29 Kg	32.5 lbs. / 14.74 Kg
<div>CARBON FRAMESET</div> <div>ALLOY FRAMESET</div> <div>FRAMESET</div>					
PRICE	\$2999 USD	\$1999 USD			
COLOR	Bone Grey, Gunsmoke Blue	Bone Grey, Gunsmoke Blue			
REAR SHOCK	Fox DPS Performance Elite	Fox DPS Performance Elite			

FRAME & TECH INFO

- [DOWNLOAD FRAME EXPLODED VIEW](#)
[SUSPENSION SETUP GUIDE](#)

FORK AXLE TO CROWN	551mm
FORK OFFSET	42mm [Rockshox] / 44mm [Fox]

REAR SHOCK SIZE	210mm x 50mm
REAR SHOCK HARDWARE	30mm x 8mm Top / 25mm x 8mm Bottom
HEADSET	44mm Zero Stack (Top) / 56mm Zero Stack (Bottom)
BOTTOM BRACKET	73mm BSA Threaded
REAR BRAKE	180mm Post Mount
REAR AXLE	Syntace X12 148
FRONT DERAILLEUR	No Support
ISCG TABS	ISCG05
SEATPOST DIAMETER	31.6mm
MAXIMUM SEATPOST INSERTION	Small 150mm, Medium 160mm, Large 200mm, XL 245mm
SEAT CLAMP SIZE	Alloy 34.9mm/Carbon 37mm
MAXIMUM CHAINRING	34t
MAXIMUM TIRE	29 x 2.4
SAG SETUP	16-17mm (32-35%)
FRAME WEIGHT (Medium with Shock/Axle/Hardware)	Carbon 6.5 lbs - 2.95 kg Alloy 8.8 lbs. - 3.99 Kg
WARRANTY	3 YEAR WE GOT YOUR BACK WARRANTY

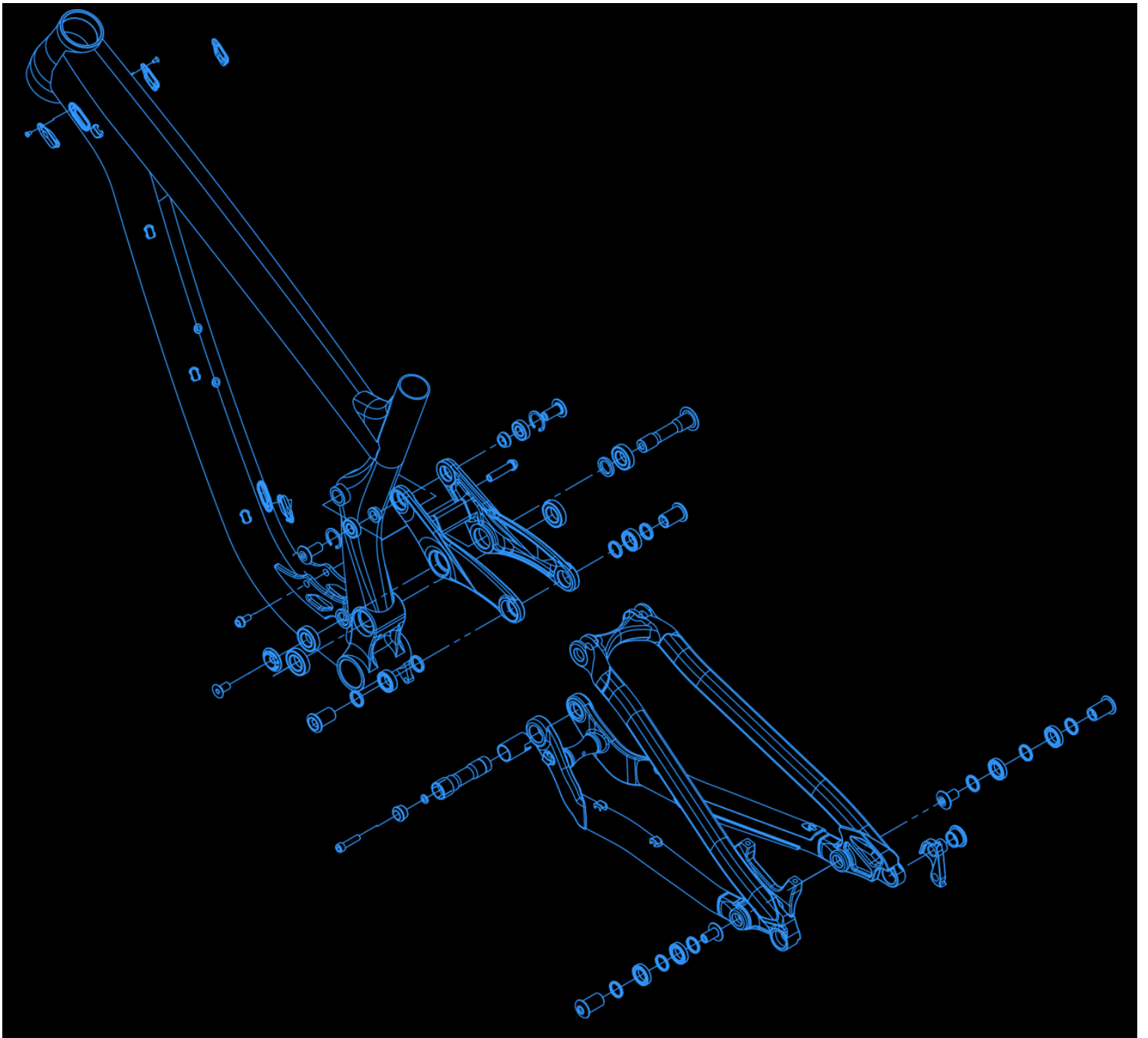




PHOTO: BEN TOBIN





YOU HAVE REACHED THE BOTTOM OF TRANSITIONBIKES.COM. IF YOU GET BORED DOWN HERE, [CLICK HERE](#) AND WE CAN TAKE YOU BACK TO THE TOP.