

A mountain biker is captured in a dynamic pose, performing a wheelie on a rocky trail. The rider is wearing a white long-sleeved shirt, black shorts, a helmet, and a backpack. The bike is a full-suspension mountain bike with a blue water bottle mounted on the frame. The background features a dense forest of evergreen trees under a bright sky. The overall scene conveys a sense of adventure and outdoor recreation.

“ADVENTURE ON EVERY RIDE”

SMUGGLER

120MM REAR / 140MM FRONT / 29” WHEELS



It is no surprise we love 29ers and the new Smuggler is our take on the perfect 29er trail bike. Just the right amount of travel front and rear to keep it responsive and fun but also aggressive for when the trail turns downright nasty. We know on a long ride that you can encounter just about every type of terrain and obstacle so we designed the Smuggler to not only adapt to trail conditions but downright own them. Our Speed Balanced Geometry is the final touch designed to maintain traction and control on the way up while keeping you composed and confident on ultra technical descents.





12X148 BOOST REAR END



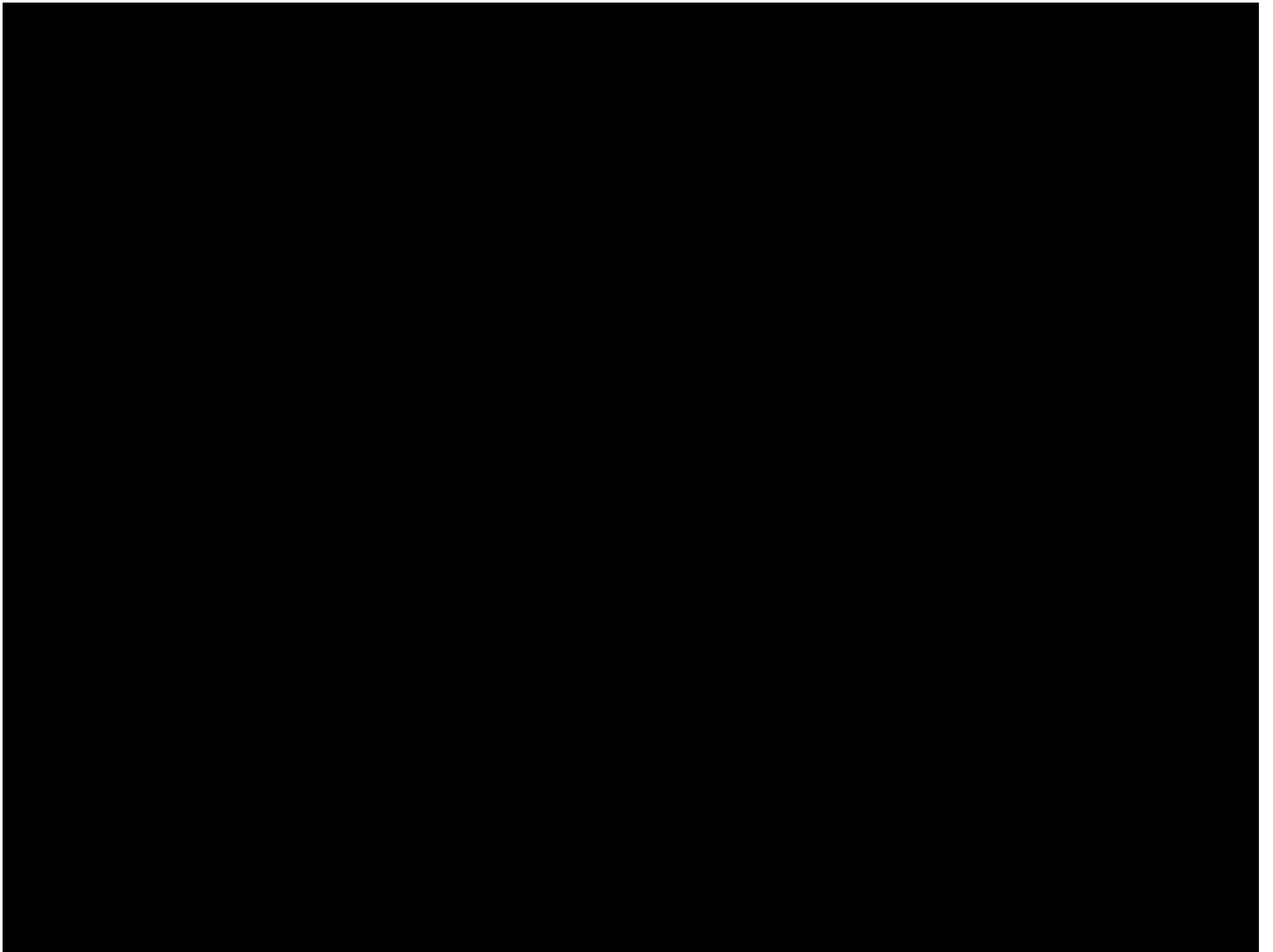
RATTLE FREE CABLE ROUTING



FULL WATER BOTTLE STORAGE

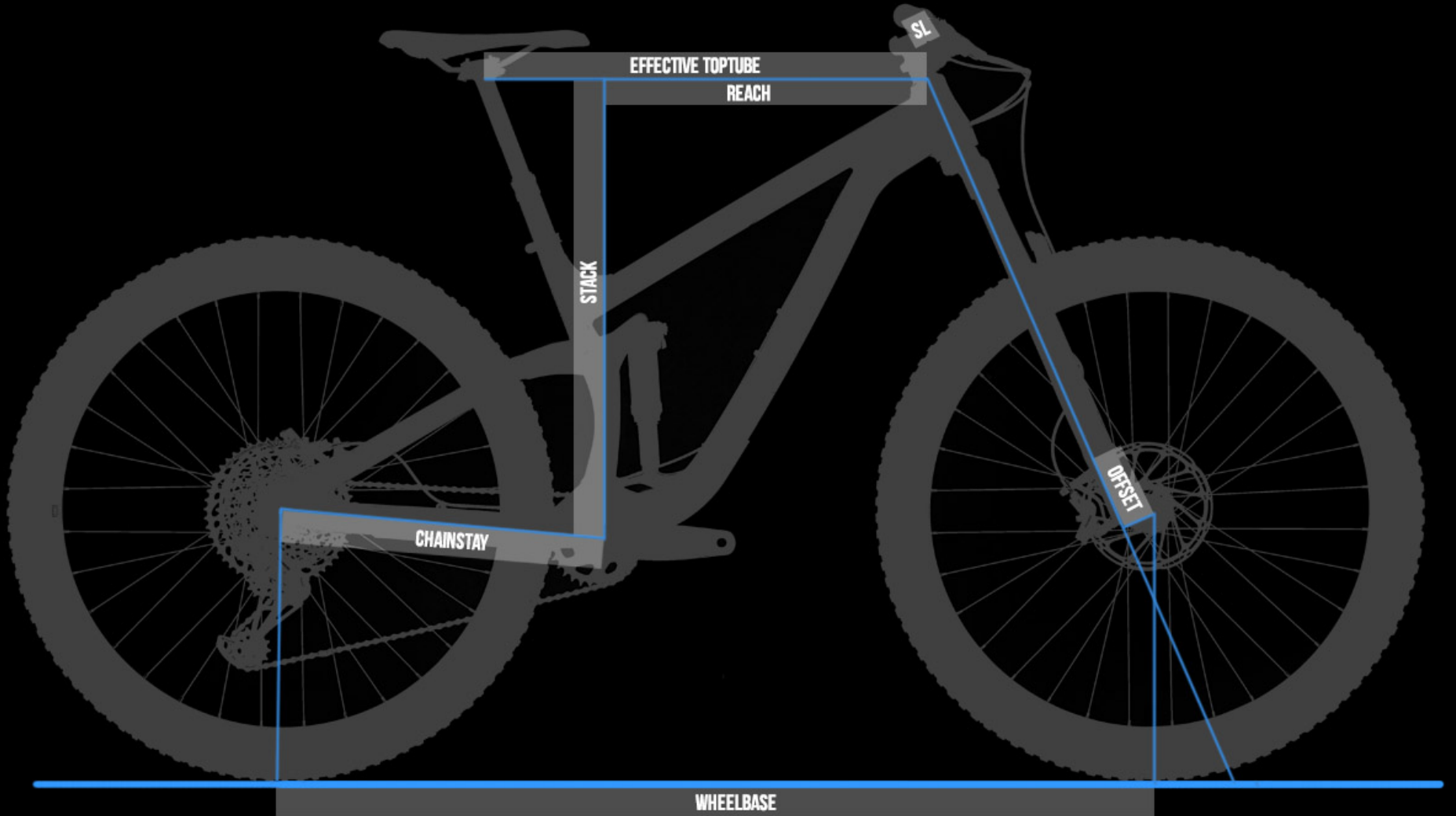


EXTERNAL REAR BRAKE CABLE ROUTING



SBG

SPEED BALANCED GEOMETRY



SPEED BALANCED GEOMETRY

SBG ensures the bike maintains low speed agility, front wheel traction, and proper rider weight balance while actually increasing confidence in steep terrain and at high speeds. With SBG, a slacker head tube angle is combined with a all new reduced offset fork standard, preventing the front wheel from being too far in front of the rider. This improves front to rear weight distribution on the bike, which is often out of balance on long and slack bikes. One of SBG's greatest benefits is that it creates a confident steering feel that adapts to wheel speed. More stability when going fast, more agility on technical slow speed maneuvering as well as improved traction, control and confidence for any skill level of rider.

[LEARN MORE ABOUT SBG](#)

	SM	MD	LG	XL
REACH	425	450	475	500
STACK	615	615	624	633
EFFECTIVE TT LENGTH	571	596	625	653
SEAT TUBE LENGTH	400	410	450	495
EFFECTIVE ST ANGLE	77	76.3	75.8	75.3
HEAD TUBE LENGTH	100	100	110	120
HEAD TUBE ANGLE	66.0	66.0	66.0	66.0
CHAINSTAY LENGTH	430	430	430	430
WHEELBASE	1159	1184	1213	1242
BOTTOM BRACKET DROP	35	35	35	35

ESTIMATED BB HEIGHT

340

340

340

340

STAND OVER HEIGHT

688

695

705

720

FORK OFFSET

43

43

43

43

[CHECK OUT OUR SIZING GUIDE](#)



BUILD THE SMUGGLER

SPEC: X01 GX NX FRAME ONLY

COLOR: BONE GREY GUNSMOKE BLUE

PRICE: \$4,999

[FIND A DEALER](#)

[BUY ON OUR STORE](#)

	X01 COMPLETE	GX COMPLETE	NX COMPLETE
PRICE	\$4999 USD	\$3999 USD	\$2999 USD
COLOR	Bone Grey, Gunsmoke Blue	Bone Grey, Gunsmoke Blue	Bone Grey, Gunsmoke Blue
REAR SHOCK	Fox DPS Performance Elite	Fox DPS Performance Elite	RockShox Deluxe RT
FORK	Fox 34 Float Fit 4 Performance Elite 140mm	Fox 34 Float Grip Performance 140mm	RockShox Revelation RC Solo Air 140mm
HEADSET	Cane Creek 40 Series	FSA No.57E	FSA No.57E
STEM	RaceFace Turbine R 35 (40mm)	RaceFace Aeffect R (40mm)	RaceFace Aeffect R (40mm)
BAR	RaceFace Turbine R 35 (800mm x 20mm)	RaceFace Aeffect R (780mm x 20mm)	RaceFace Chester 35 (780mm x 20mm)
GRIPS	ODI Elite Flow	Velo Single Clamp	Velo Single Clamp
SADDLE	ANVL Forge Stealth Cromo	ANVL Forge Stealth Cromo	WTB Volt Comp
SEATPOST	RockShox Reverb Stealth 1x Remote	RockShox Reverb Stealth	RaceFace Aeffect Dropper
BRAKES	SRAM Guide RSC	SRAM Guidge R	SRAM Level T
ROTORS	SRAM Centerline (180mm)	SRAM Centerline (180mm)	SRAM Centerline (180mm)
SHIFTER	SRAM X01 Eagle	SRAM GX Eagle	SRAM NX
DERAILLEUR	SRAM X01 Eagle	SRAM GX Eagle	SRAM NX
CASSETTE	SRAM XG 1275 (10-50t)	SRAM XG 1275 (10-50t)	SRAM PG 1130 (11-42t)
CHAIN	SRAM GX Eagle	SRAM GX Eagle	SRAM PC 1110
CRANK	SRAM Descendent Carbon (30t, 170mm)	SRAM Descendent 6K (30t, 170mm)	RaceFace Aeffect (28t, 170mm)

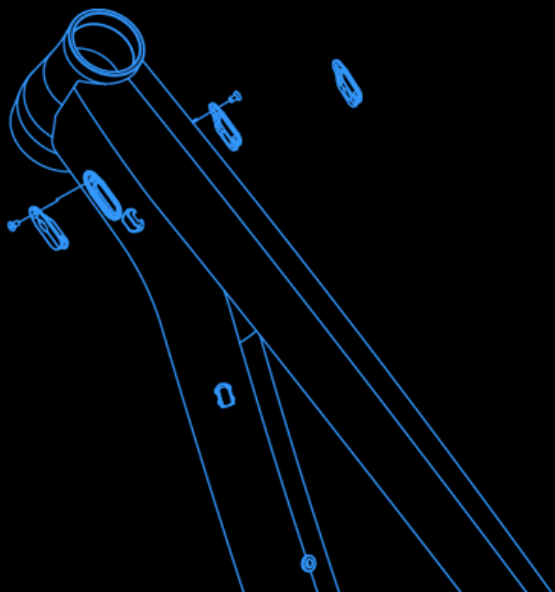
RIMS	E*Thirteen TRS+ 30mm	E*Thirteen TRS 30mm	WTB STPi29
HUBS	E*Thirteen TRS+	Novatec D711SB & D462SB XD	Novatec D711SB & D462SB
TIRES	Maxxis Minion DHF / DHR II 2.3 EXO 3C	Maxxis Minion DHF / DHR II 2.3 EXO Dual	Maxxis Minion DHF / DHR II 2.3 EXO Dual
WEIGHT	31.1 lbs. / 14.11 Kg	31.5 lbs. / 14.29 Kg	32.5 lbs. / 14.74 Kg
FRAMESET			
PRICE	\$1999 USD		
COLOR	Bone Grey, Gunsmoke Blue		
REAR SHOCK	Fox DPS Performance Elite		

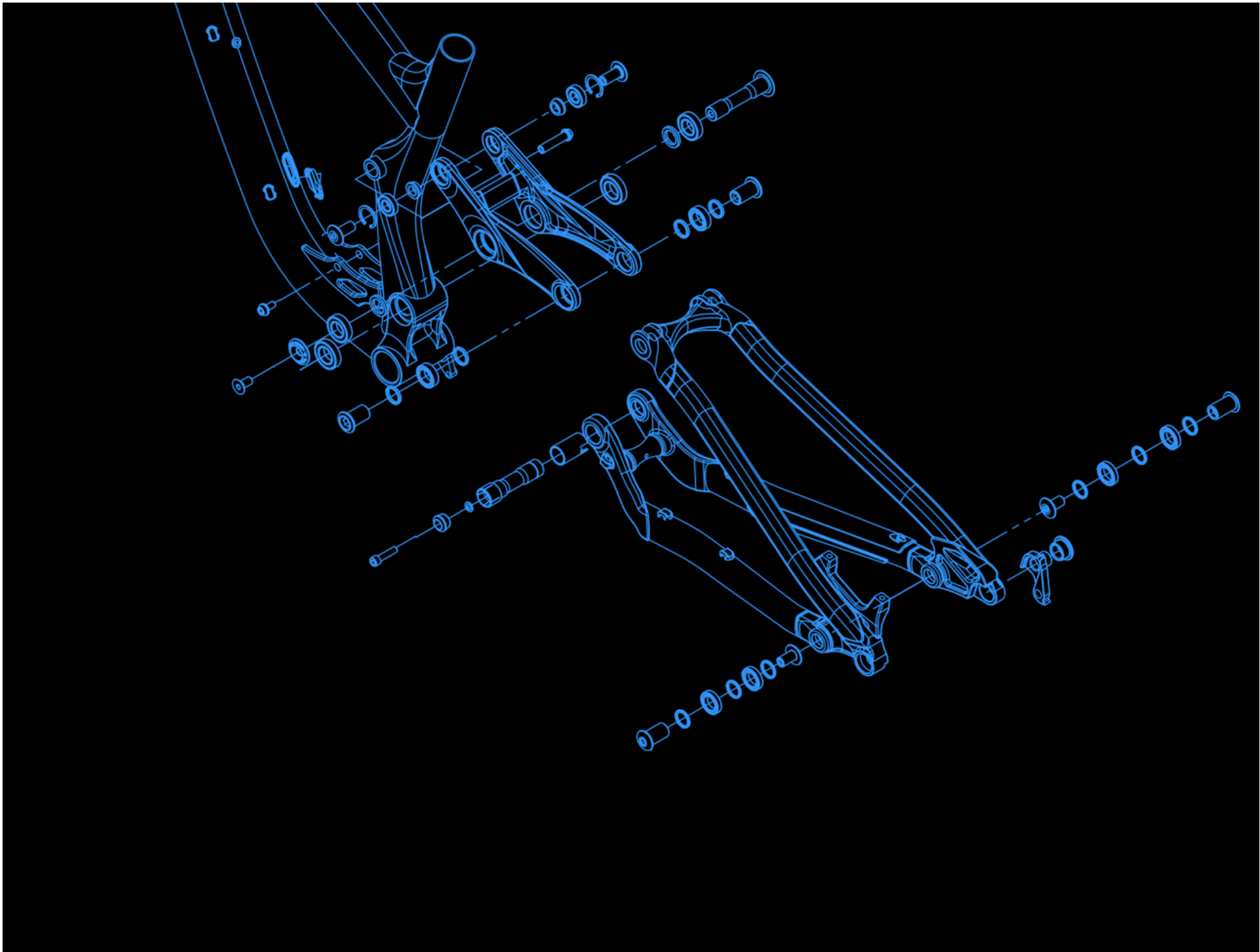
FRAME & TECH INFO

[DOWNLOAD FRAME EXPLODED VIEW](#)

FORK AXLE TO CROWN	551mm
FORK OFFSET	42mm [Rockshox] / 44mm [Fox]
REAR SHOCK SIZE	210mm x 50mm
REAR SHOCK HARDWARE	30mm x 8mm Top / 25mm x 8mm Bottom
HEADSET	44mm Zero Stack [Top] / 56mm Zero Stack [Bottom]
BOTTOM BRACKET	73mm BSA Threaded
REAR BRAKE	180mm Post Mount

REAR AXLE	Syntaxe X12 148
FRONT DERAILLEUR	No Support
ISCG TABS	ISCG05
SEATPOST DIAMETER	31.6mm
MAXIMUM SEATPOST INSERTION	Small 150mm, Medium 160mm, Large 200mm, XL 245mm
SEAT CLAMP	34.9mm
MAXIMUM CHAINRING	34t
MAXIMUM TIRE	29 x 2.4
SAG SETUP	16-17mm [32-35%]
FRAME WEIGHT (Medium with Shock/Axle/Hardware)	8.8 lbs. / 3.99 Kg
WARRANTY	3 YEAR WE GOT YOUR BACK WARRANTY







PHOTOS: BEN TOBIN







YOU HAVE REACHED THE BOTTOM OF TRANSITIONBIKES.COM. IF YOU GET BORED DOWN HERE, [CLICK HERE](#) AND WE CAN TAKE YOU BACK TO THE TOP.