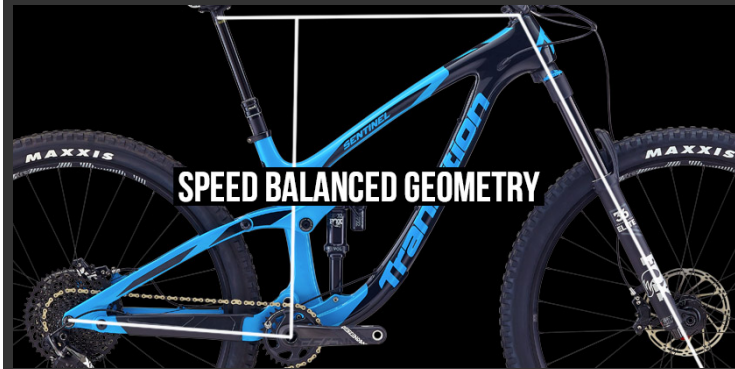


“TURN MOUNTAINS INTO MOLE HILLS”

SENTINEL

140MM REAR / 160MM FRONT / 29" WHEELS

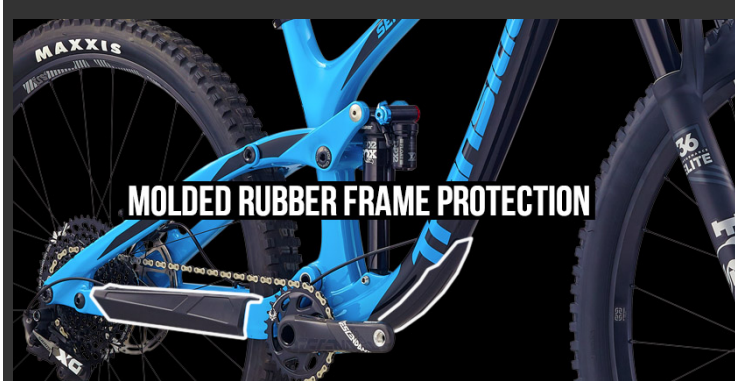
The Sentinel was designed for 29er skeptics. A bike so capable, playful and fun that even the most staunch 29er naysayer will instantly convert. With our reverse mullet suspension configuration, the Sentinel stays responsive and playful while delivering incredible downhill monster truck capabilities. Our Speed Balanced Geometry is the crown jewel that unlocks 100% of the potential of this bike. With SBG you get improved climbing and cornering traction along with incredible composure and control that won't flinch when you open it up on steep, fast, technical descents.



SPEED BALANCED GEOMETRY



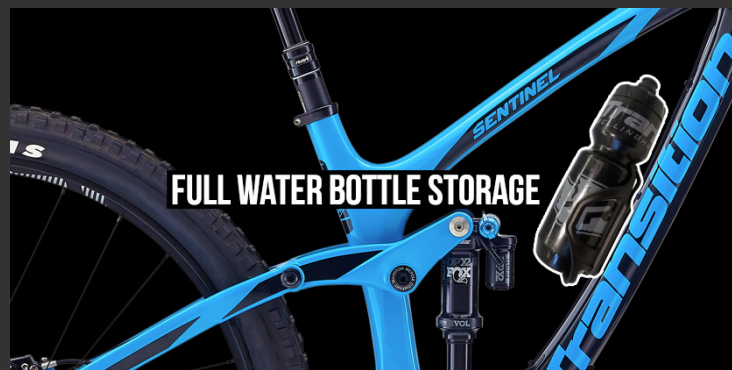
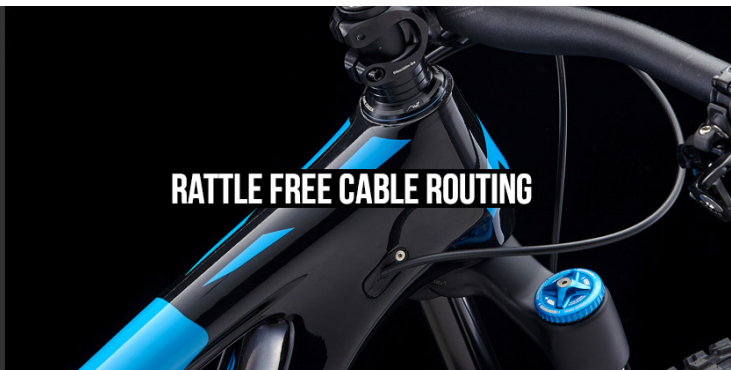
GIDDYUP 2.0 OHH SUSPENSION



MOLDED RUBBER FRAME PROTECTION



ENDURO MAX SEALED BEARINGS



[R]evolution

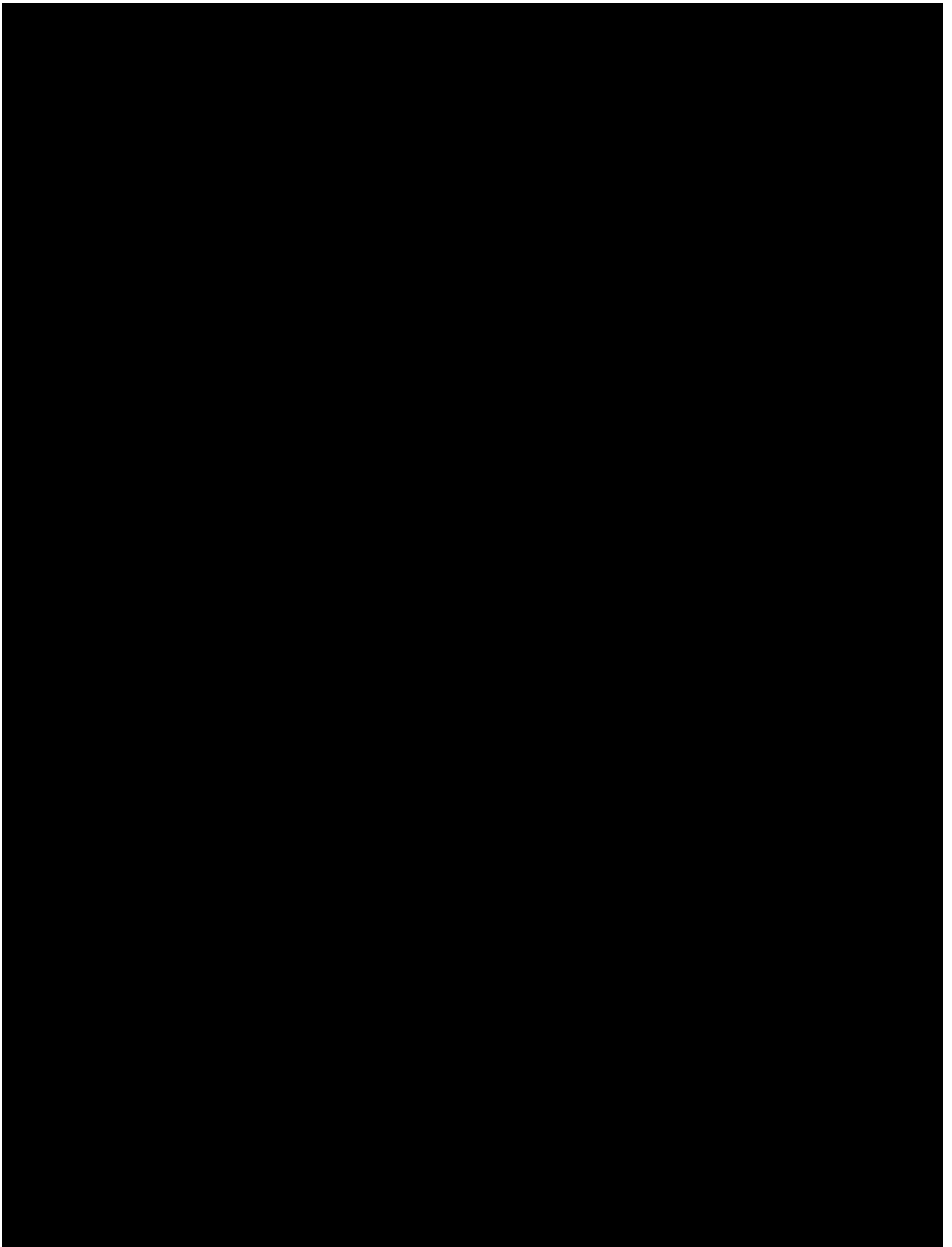
"THIS BIKE APPEARS TO BE THE FUTURE OF MTB. IT WAS NOT SO LONG AGO WE DREAMED OF A BIKE THAT HAD THE CAPABILITY OF SPEED, HANDLING, DESCENDING AND CLIMBING. A BIKE YOU COULD TAKE OUT OF THE SHED AND DO IT ALL; RIDE IT ONE WEEKEND AND RACE IT THE NEXT. WELL PEOPLE, THIS IS THE REAL DEAL AND NO DOUBT ONE OF THE MOST CAPABLE ALL-ROUND SPEED MACHINES WE HAVE TESTED." - REVOLUTION MAGAZINE - [CLICK HERE FOR THE FULL REVIEW](#)

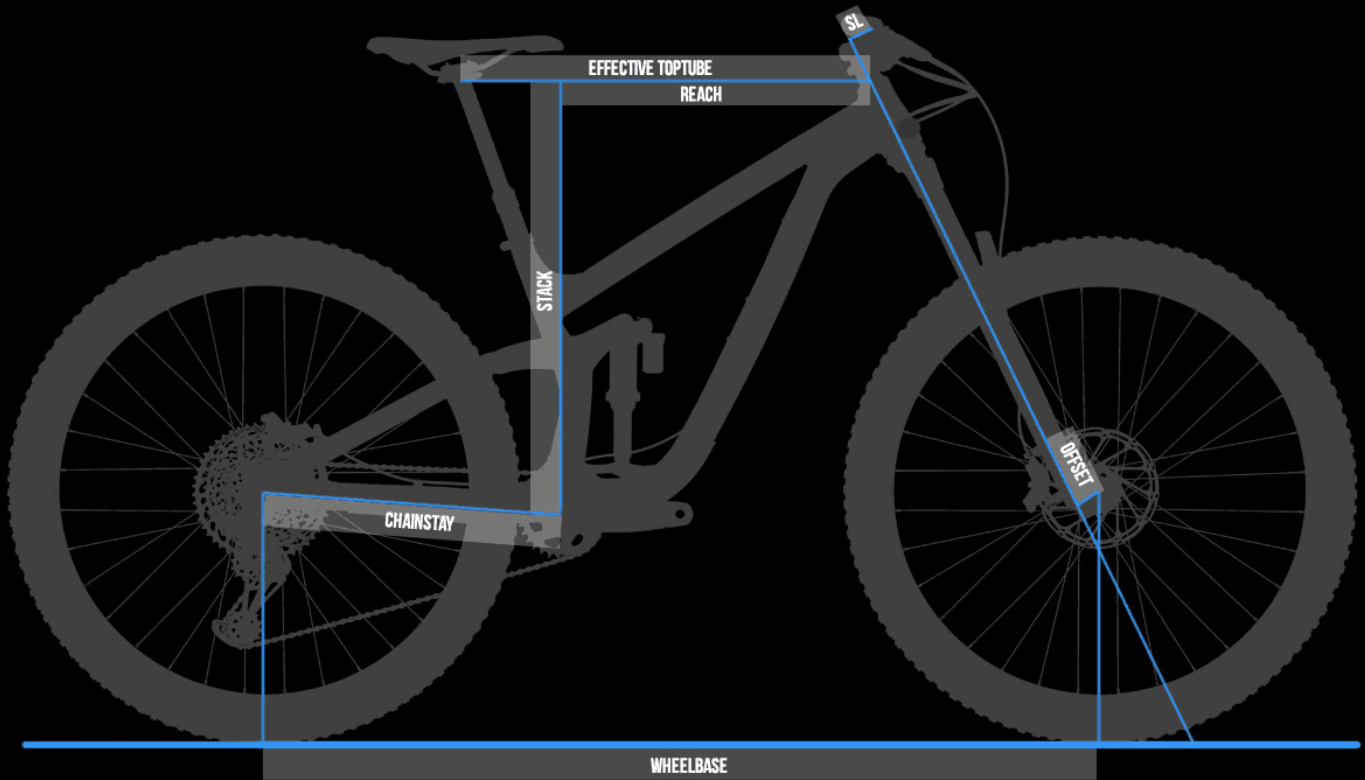
bike

"IF THERE'S A DESIGN-FOCUSED ARMS RACE OCCURRING IN MOUNTAIN BIKING, ONE NEEDS LOOK NO FURTHER THAN TRANSITION AS A KEY PROTAGONIST IN THE CURRENT PUSH TOWARD EVER-LONGER AND MORE-AGGRESSIVE GEOMETRY. IT SHOULD COME AS ABSOLUTELY NO SURPRISE THAT THE SENTINEL IS MOST AT HOME BOMBING DOWNHILL. IT DOES THIS RIDICULOUSLY WELL, STRAIGHT-LINING THE ROUGHEST, UGLIEST, SKETCHIEST DESCENTS WITH A SUPREME CONFIDENCE THAT BORDERS ON DISDAIN." - THE BIKE BIBLE REVIEW - [CLICK HERE FOR THE FULL REVIEW](#)

pb pinkbike

"THE SENTINEL IS AN ABSOLUTE BEAST WHEN IT COMES TIME TO DESCEND, A DOWNRIGHT MONSTER WHEN THE TRAIL TURNS STEEP AND ROUGH. THERE ARE PLENTY OF LONG-TRAVEL 29ERS OUT THERE THAT CAN HANDLE THE WHISTLER BIKE PARK, BUT WHEN IT COMES TO TACKLING THE STEEPEST, CHUNKIEST TRAILS THERE AREN'T MANY THAT CAN MATCH THE SENTINEL'S PERFORMANCE." - MIKE KAZIMER (PINKBIKE.COM) - [CLICK HERE FOR THE FULL REVIEW](#)





SPEED BALANCED GEOMETRY

SBG ensures the bike maintains low speed agility, front wheel traction, and proper rider weight balance while actually increasing confidence in steep terrain and at high speeds. With SBG, a slacker head tube angle is combined with a all new reduced offset fork standard, preventing the front wheel from being too far in front of the rider. This improves front to rear weight distribution on the bike, which is often out of balance on long and slack bikes. One of SBG's greatest benefits is that it creates a confident steering feel that adapts to wheel speed. More stability when going fast, more agility on technical slow speed maneuvering as well as improved traction, control and confidence for any skill level of rider.

[LEARN MORE ABOUT SBG](#)

	SM	MD	LG	XL
REACH	425	450	475	500
STACK	617	617	626	635

EFFECTIVE TT LENGTH	568	593	622	650
SEAT TUBE LENGTH	360	400	440	490
EFFECTIVE ST ANGLE	77.5	76.8	76.3	75.8
HEAD TUBE LENGTH	100	100	110	120
HEAD TUBE ANGLE	64.0	64.0	64.0	64.0
CHAINSTAY LENGTH	435	435	435	435
WHEELBASE	1193	1218	1247	1277
BOTTOM BRACKET DROP	30	30	30	30
ESTIMATED BB HEIGHT	345	345	345	345
STAND OVER HEIGHT	685	695	700	715
FORK OFFSET	43	43	43	43

[CHECK OUT OUR SIZING GUIDE](#)



BUILD THE SENTINEL

FRAME: CARBON ALLOY

SPEC: X01 GX NX FRAME ONLY

COLOR: TR BLUE BLACK POWDER

PRICE: \$5,999 [FIND A DEALER](#) [BUY ON OUR STORE](#)

	X01 CARBON	X01 ALLOY	GX CARBON	GX ALLOY	NX ALLOY
PRICE	\$5999 USD	\$4999 USD	\$4999 USD	\$3999 USD	\$2999 USD
COLOR	TR Blue, Black Powder	TR Blue, Black Powder	TR Blue, Black Powder	TR Blue, Black Powder	TR Blue, Black Powder
REAR SHOCK	Fox DPX2 Performance Elite	Fox DPX2 Performance Elite	Fox DPX2 Performance Elite	Fox DPX2 Performance Elite	RockShox Deluxe RT
FORK	Fox 36 Float RC2 Performance Elite 160mm	Fox 36 Float RC2 Performance Elite 160mm	RockShox Lyrik RC Solo Air 160mm	RockShox Lyrik RC Solo Air 160mm	RockShox Yari RC Solo Air 160mm
HEADSET	Cane Creek 40 Series	Cane Creek 40 Series	FSA No.57E	FSA No.57E	FSA No.57E
STEM	RaceFace Trubine R 35 (40mm)	RaceFace Trubine R 35 (40mm)	RaceFace Aeffect R (40mm)	RaceFace Aeffect R (40mm)	RaceFace Aeffect R (40mm)
BAR	RaceFace Turbine R 35 (800mm x 20mm)	RaceFace Turbine R 35 (800mm x 20mm)	RaceFace Chester 35 (780mm x 20mm)	RaceFace Chester 35 (780mm x 20mm)	RaceFace Chester 35 (780mm x 20mm)
GRIPS	ODI Elite Flow	ODI Elite Flow	Velo Single Clamp	Velo Single Clamp	Velo Single Clamp
SADDLE	ANVL Forge Stealth Cromo	ANVL Forge Stealth Cromo	ANVL Forge Stealth Cromo	ANVL Forge Stealth Cromo	WTB Volt Comp
SEATPOST	RockShox Reverb Stealth 1x Remote	RockShox Reverb Stealth 1x Remote	RockShox Reverb Stealth	RockShox Reverb Stealth	RaceFace Aeffect Dropper
BRAKES	SRAM Code RSC	SRAM Code RSC	SRAM Code R	SRAM Code R	SRAM Level T
ROTORS	SRAM Centerline (180mm)	SRAM Centerline (180mm)	SRAM Centerline (180mm)	SRAM Centerline (180mm)	SRAM Centerline (200mm Front/180mm Rear)
SHIFTER	SRAM X01 Eagle	SRAM X01 Eagle	SRAM GX Eagle	SRAM GX Eagle	SRAM NX
DERAILLEUR	SRAM X01 Eagle	SRAM X01 Eagle	SRAM GX Eagle	SRAM GX Eagle	SRAM NX
CASSETTE	SRAM XG 1275 (10-50t)	SRAM XG 1275 (10-50t)	SRAM XG 1275 (10-50t)	SRAM XG 1275 (10-50t)	SRAM PG 1130 (11-42t)
CHAIN	SRAM GX Eagle	SRAM GX Eagle	SRAM GX Eagle	SRAM GX Eagle	SRAM PC 1110
CRANK	SRAM Descendent Carbon (30t, 170mm)	SRAM Descendent Carbon (30t, 170mm)	SRAM Descendent 6K (30t, 170mm)	SRAM Descendent 6K (30t, 170mm)	RaceFace Aeffect (28t, 170mm)
RIMS	E*Thirteen TRS+ 30mm	E*Thirteen TRS+ 30mm	E*Thirteen TRS 30mm	E*Thirteen TRS 30mm	WTB STPi29
HUBS	E*Thirteen TRS+	E*Thirteen TRS+	Novatec D711SB & D462SB XD	Novatec D711SB & D462SB XD	Novatec D711SB & D462SB XD
TIRES	Maxxis Minion DHF / DHR	Maxxis Minion DHF / DHR	Maxxis Minion DHF /	Maxxis Minion DHF /	Maxxis Minion DHF / DHR II

	II 2.3 EXO 3C	II 2.3 EXO 3C	DHR II 2.3 EXO Dual	DHR II 2.3 EXO Dual	2.3 EXO Dual
WEIGHT	29.7 lbs / 13.51 kg	32.2 lbs. / 14.61 Kg	30.1 lbs. / 13.69 Kg	32.6 lbs. / 14.79 Kg	33.6 lbs. / 15.24 Kg
	FRAMESET CARBON	FRAMESET ALLOY			
PRICE	\$2999 USD	\$1999 USD			
COLOR	TR Blue, Black Powder	TR Blue, Black Powder			
REAR SHOCK	Fox DPX2 Performance Elite	Fox DPX2 Performance Elite			

FRAME & TECH INFO

[DOWNLOAD FRAME EXPLODED VIEW](#)
[SUSPENSION SETUP GUIDE](#)

FORK AXLE TO CROWN	571mm
FORK OFFSET	42mm [Rockshox] / 44mm [Fox]
REAR SHOCK SIZE	205mm x 57.5mm
REAR SHOCK HARDWARE	Trunion Mount Top / 25mm x 8mm Bottom
HEADSET	44mm Zero Stack [Top] / 56mm Zero Stack [Bottom]
BOTTOM BRACKET	73mm BSA Threaded
REAR BRAKE	180mm Post Mount
REAR AXLE	Syntace X12 148
FRONT DERAILLEUR	No Support
ISCG TABS	ISCG05
SEATPOST DIAMETER	31.6mm
MAXIMUM SEATPOST INSERTION	Alloy: Small 140mm, Medium 185mm, Large 225mm, XL 270mm Carbon: Small 190mm, Medium 225mm, Large 245mm, XL 245mm
SEAT CLAMP	Alloy 34.9mm/Carbon 37mm
MAXIMUM CHAINRING	34t
MAXIMUM TIRE	29 x 2.5

SAG SETUP

18-20mm [32-35%]

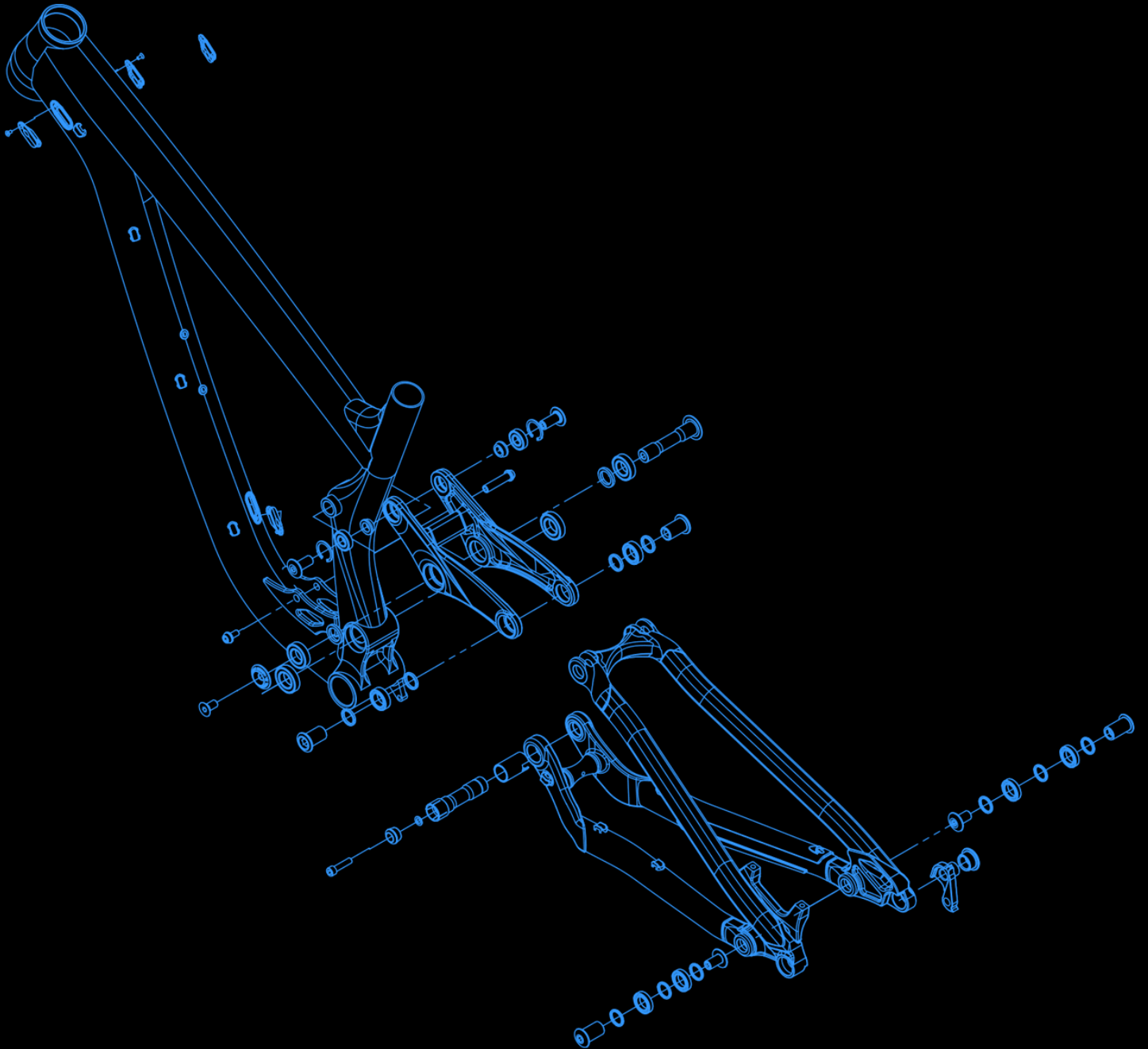
FRAME WEIGHT

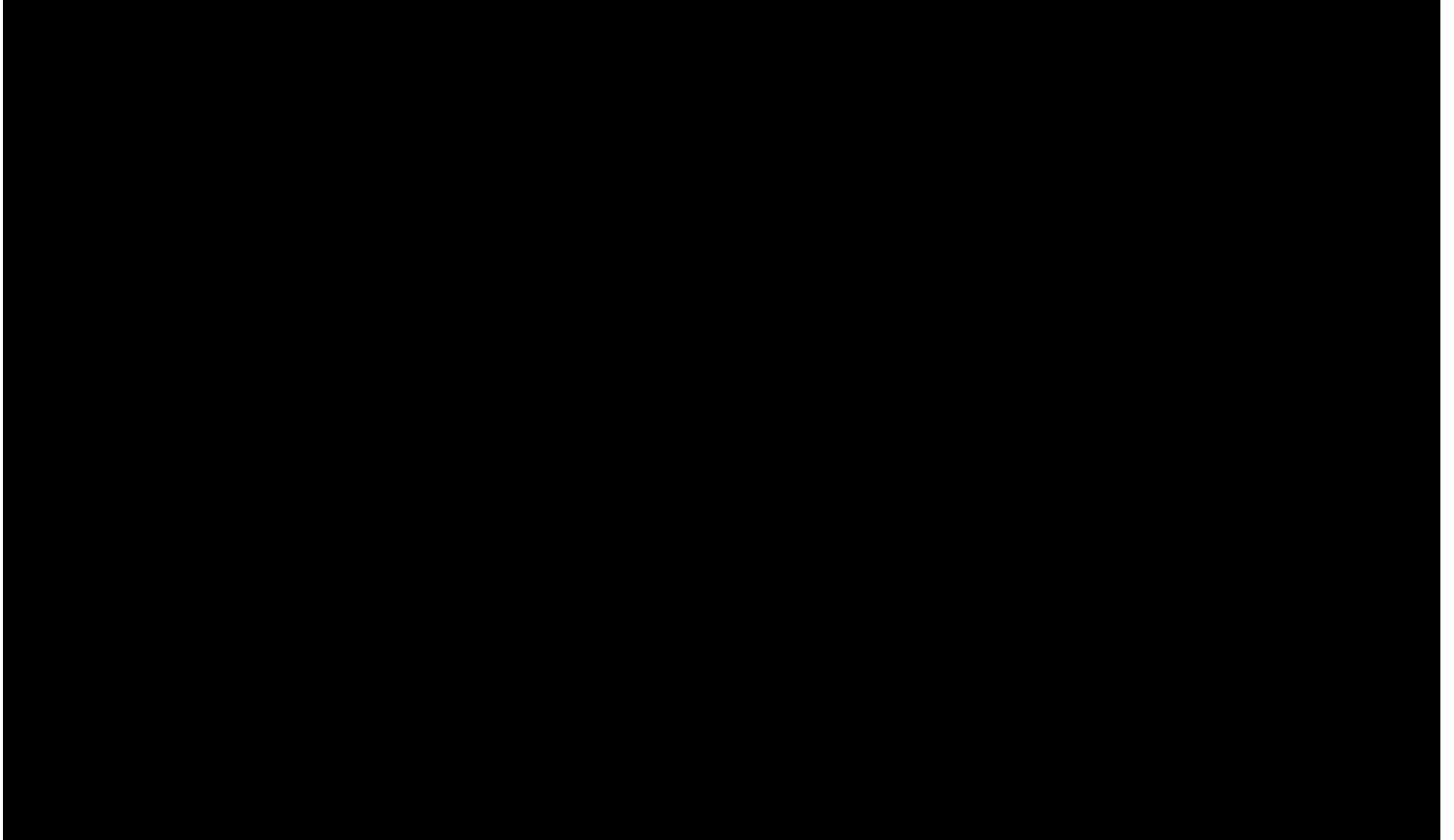
(Medium with Shock/Axle/Hardware)

Carbon 6.8 lbs. - 3.1 Kg | Alloy 9.3 lbs. - 4.2 Kg

WARRANTY

3 YEAR WE GOT YOUR BACK WARRANTY







YOU HAVE REACHED THE BOTTOM OF TRANSITIONBIKES.COM. IF YOU GET BORED DOWN HERE, [CLICK HERE](#) AND WE CAN TAKE YOU BACK TO THE TOP.