

SENTINEL ALLOY GX



If you're looking for the best parts you can get for a great price, our Sentinel Alloy GX will tick every box. We know suspension performance is king so we give you the same Fox fork and rear shock we spec on our top of the line Sentinel Carbon X01. The drivetrain is GX Eagle with a massive gear range that is the new standard for performance and value. Along with top of the line suspension, we give you killer 4 piston Code RSC brakes that are a crowd favorite here at Transition. We finish the build with rock-solid Stans Flow S1 Team complete wheelset and the best Maxxis Minion 3C tires you can buy. The Sentinel Alloy GX is a true riders bike that wants top performing parts that can appreciate a tried and true alloy frameset that can charge all day.

AVAILABLE COLORS:  GUNMETAL GRAY  PINOT NOIR

\$4,399.00 USD

SELECT YOUR SIZE & COLOR:

SMALL/PINOT NOIR RED ▼

ADD TO CART

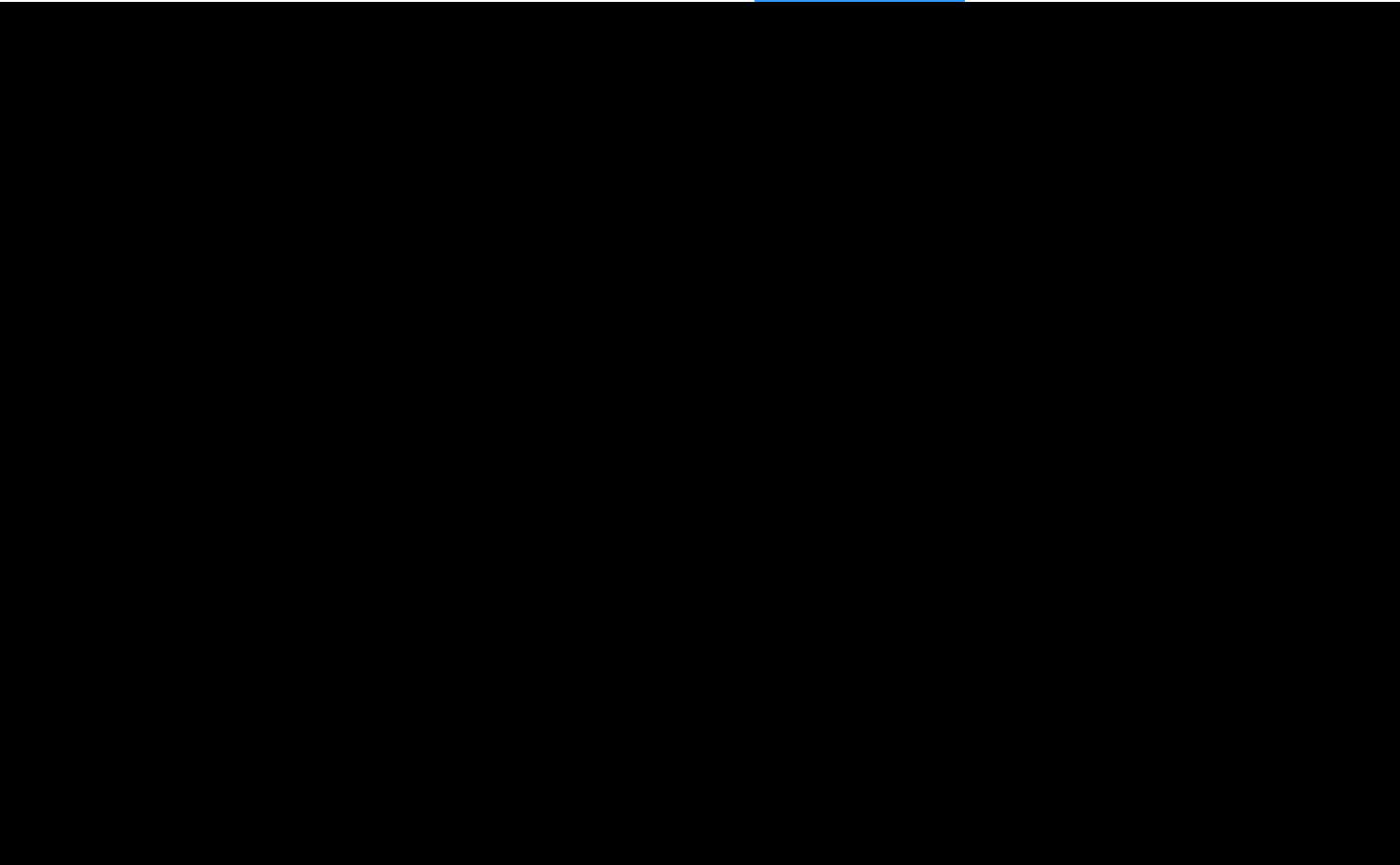
FIND A DEALER

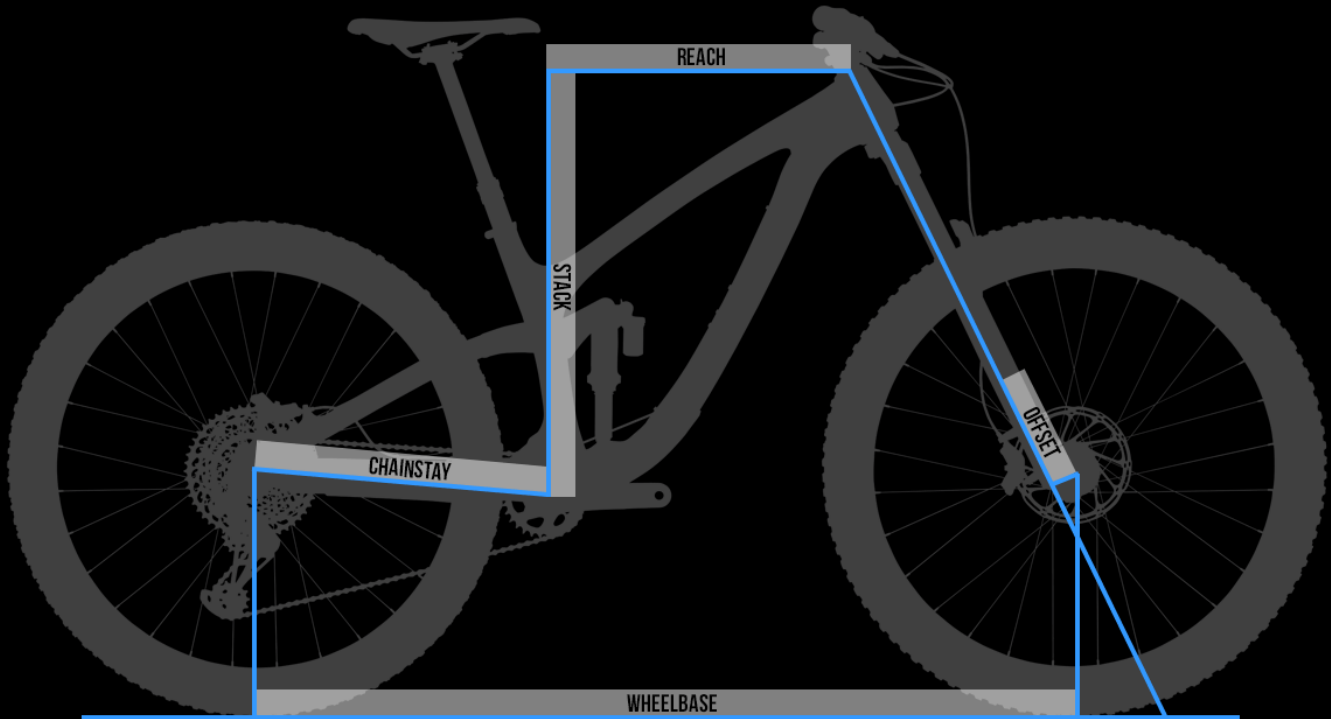
IN STOCK:

This item will ship within 2 business days

	SENTINEL CARBON X01	SENTINEL CARBON GX	SENTINEL ALLOY GX	SENTINEL CARBON NX	SENTINEL ALLOY NX
PRICE	\$5999 USD	\$4999 USD	\$4399 USD	\$4199 USD	\$3199 USD
FRAME	Sentinel Carbon 140mm Rear/160mm Front	Sentinel Carbon 140mm Rear/160mm Front	Sentinel Alloy 140mm Rear/160mm Front	Sentinel Carbon 140mm Rear/160mm Front	Sentinel Alloy 140mm Rear/160mm Front
REAR SHOCK	Fox DPX2 Performance Elite	Fox DPX2 Performance	Fox DPX2 Performance Elite	RockShox Deluxe RT	RockShox Deluxe RT
FORK	Fox 36 Grip 2 Performance Elite 160mm	Fox 36 Grip Performance 160mm	Fox 36 Grip 2 Performance Elite 160mm	Rockshox Yari RC Charger Damper 160mm	Rockshox Yari RC Charger Damper 160mm
HEADSET	Cane Creek 40 Series	FSA No.57E	FSA No.57E	FSA No.57E	FSA No.57E
STEM	ANVL Swage (40mm)	RaceFace Aeffect R (40mm)	RaceFace Aeffect R (40mm)	RaceFace Aeffect R (40mm)	RaceFace Aeffect R (40mm)
HANDLEBAR	ANVL Mandrel Alloy 35 SM/MD (800 x 20mm) LG/XL (800 x 30mm)	RaceFace Chester 35 SM/MD (780 x 20mm) LG/XL (780 x 35mm)	RaceFace Chester 35 SM/MD (780 x 20mm) LG/XL/XXL (780 x 35mm)	RaceFace Chester 35 SM/MD (780 x 20mm) LG/XL (780 x 35mm)	RaceFace Chester 35 SM/MD (780 x 20mm) LG/XL (780 x 35mm)
GRIPS	ODI Elite Flow	ODI Elite Flow	ODI Elite Flow	Velo VLG-1812D2	Velo VLG-1812D2
SADDLE	ANVL Forge Ti	ANVL Forge Cromo	ANVL Forge Cromo	WTB Silverado Comp	WTB Silverado Comp
SEATPOST	RockShox Reverb Stealth 1x Remote SM (125mm)	RockShox Reverb Stealth SM (125mm)	RockShox Reverb Stealth 1x Remote SM (125mm)	KS Lev Integra SM (125mm) MD (150mm) LG/XL (175mm)	KS Lev Integra SM (125mm) MD (150mm) LG/XL (175mm)

	MD (150mm) LG/XL (170mm)	MD (150mm) LG/XL (170mm)	MD (150mm) LG/XL/XXL (170mm)		
BRAKES	SRAM Code RSC	SRAM Code R	SRAM Code RSC	SRAM Guide T	SRAM Guide T
ROTORS	SRAM Centerline (180mm)	SRAM Centerline (180mm)	SRAM Centerline (180mm)	SRAM Centerline (200/180mm)	SRAM Centerline (200/180mm)
SHIFTER	SRAM XO1 Eagle	SRAM GX Eagle	SRAM GX Eagle	SRAM NX Eagle	SRAM NX Eagle
DERAILLEUR	SRAM XO1 Eagle	SRAM GX Eagle	SRAM GX Eagle	SRAM NX Eagle	SRAM NX Eagle
CASSETTE	SRAM XG 1275 (10-50t)	SRAM XG 1275 (10-50t)	SRAM XG 1275 (10-50t)	SRAM PG 1230 (11-50t)	SRAM PG 1230 (11-50t)
CHAIN	SRAM GX Eagle	SRAM GX Eagle	SRAM GX Eagle	SRAM NX Eagle	SRAM NX Eagle
CRANK	SRAM Descendent Carbon DUB (170mm x 30t)	SRAM Descendent 6K DUB (170mm x 30t)	SRAM Descendent 7K DUB (170mm x 30t)	SRAM NX Eagle DUB (170mm x 30t)	SRAM NX Eagle DUB (170mm x 30t)
WHEELSET	Stans Flow MK3 Team	Stans Flow S1 Comp	Stans Flow S1 Team	WTB STi29/Novatech D791SB/D462SB	WTB STi29/Novatech D791SB/D462SB
TIRE/FRONT	Maxxis Minion DHF 3C WT (29x2.5)	Maxxis Minion DHF 3C WT (29x2.5)	Maxxis Minion DHF 3C WT (29x2.5)	Maxxis Minion DHF Dual WT (29x2.5)	Maxxis Minion DHF Dual WT (29x2.5)
TIRE/REAR	Maxxis Minion DHRII 3C WT (29x2.4)	Maxxis Minion DHRII 3C WT (29x2.4)	Maxxis Minion DHRII 3C WT (29x2.4)	Maxxis Minion DHRII Dual WT (29x2.4)	Maxxis Minion DHRII Dual WT (29x2.4)
WEIGHT	30.488 lbs / 13.83 kg	31.58 lbs / 14.33 kg	33.74 lbs / 15.31 kg	31.80 lbs / 14.42 kg	34.67 lbs / 15.72 kg
	VIEW BIKE	VIEW BIKE		VIEW BIKE	VIEW BIKE





SPEED BALANCED GEOMETRY

SBG ensures the bike maintains low speed agility, front wheel traction, and proper rider weight balance while actually increasing confidence in steep terrain and at high speeds. With SBG, a slacker head tube angle is combined with a all new reduced offset fork standard, preventing the front wheel from being too far in front of the rider. This improves front to rear weight distribution on the bike, which is often out of balance on long and slack bikes. One of SBG's greatest benefits is that it creates a confident steering feel that adapts to wheel speed. More stability when going fast, more agility on technical slow speed maneuvering as well as improved traction, control and confidence for any skill level of rider.

[LEARN MORE ABOUT SBG](#)

	SM	MD	LG	XL	XXL
REACH	425	450	475	500	515
STACK	617	617	626	635	644

EFFECTIVE TT LENGTH	568	593	622	650	666
SEAT TUBE LENGTH	360	400	440	490	510
EFFECTIVE ST ANGLE	77.5	76.8	76.3	75.8	75.5
HEAD TUBE LENGTH	100	100	110	120	130
HEAD TUBE ANGLE	64.0	64.0	64.0	64.0	64.0
CHAINSTAY LENGTH	435	435	435	435	435
WHEELBASE	1193	1218	1247	1277	1296
BOTTOM BRACKET DROP	30	30	30	30	30
ESTIMATED BB HEIGHT	345	345	345	345	345
STAND OVER HEIGHT	685	695	700	715	720
FORK OFFSET	43	43	43	43	43
INEFFECTIVE TOPTUBE*	1.361	1.442	1.523	1.604	1.685
DOWNTUBE ANGLE	60	60	60	60	60
STANCE**	680	680	680	680	680
ROCKER EYE TO EYE	185	185	185	185	185
CHECK OUT OUR SIZING GUIDE					
*Measured In Parsecs					
**Size 9 Foot (Measured In Flip Flops)					

GIDDYUP 2.0HH SUSPENSION

Take our successful GiddyUp suspension system, add one part increased pedaling efficiency, two parts wider sag range, and three parts increased small bump sensitivity, and you get GiddyUp 2.0HH. Incredible pedaling performance balanced with a superb neutral, comfortable and fun feel that we're known for.

We specifically tuned the suspension with a moderate amount of chain growth which is highest at the sag point and decreasing deeper into the travel. Because of this finely tuned wheel path, there is a notable increase in traction when climbing, without the rider noticing the chain growth fighting the suspension movement.

GiddyUp 2.0HH is extremely easy to setup and it provides excellent support throughout the entire stroke of the shock so you can use all your travel without worrying about bottom out. Designed to be active while climbing, rear shock climbing platforms are not necessary. The suspension remains free to smooth out the trail, improve traction and control without sacrificing efficiency. With GiddyUp 2.0HH you can focus on the trail, no remotes, levers or knobs. Just grab your bike and GiddyUp.



Sentinel Stoke

by TransitionBikeCompany



"IT HAS A BALANCED RIDING POSITION, GREAT TRACTION AND ISN'T A HANDFUL IN THE TIGHT STUFF. THE SENTINEL REALLY BENEFITS FROM BEING RIDDEN HARD, 'THE FASTER THIS BIKE IS PUSHED THE MORE YOU GET FROM IT' WERE NOTES FROM OUR TESTER IEUAN AFTER REVIEWING THIS BIKE." - DIRT 100 - [CLICK HERE FOR THE FULL ARTICLE](#)



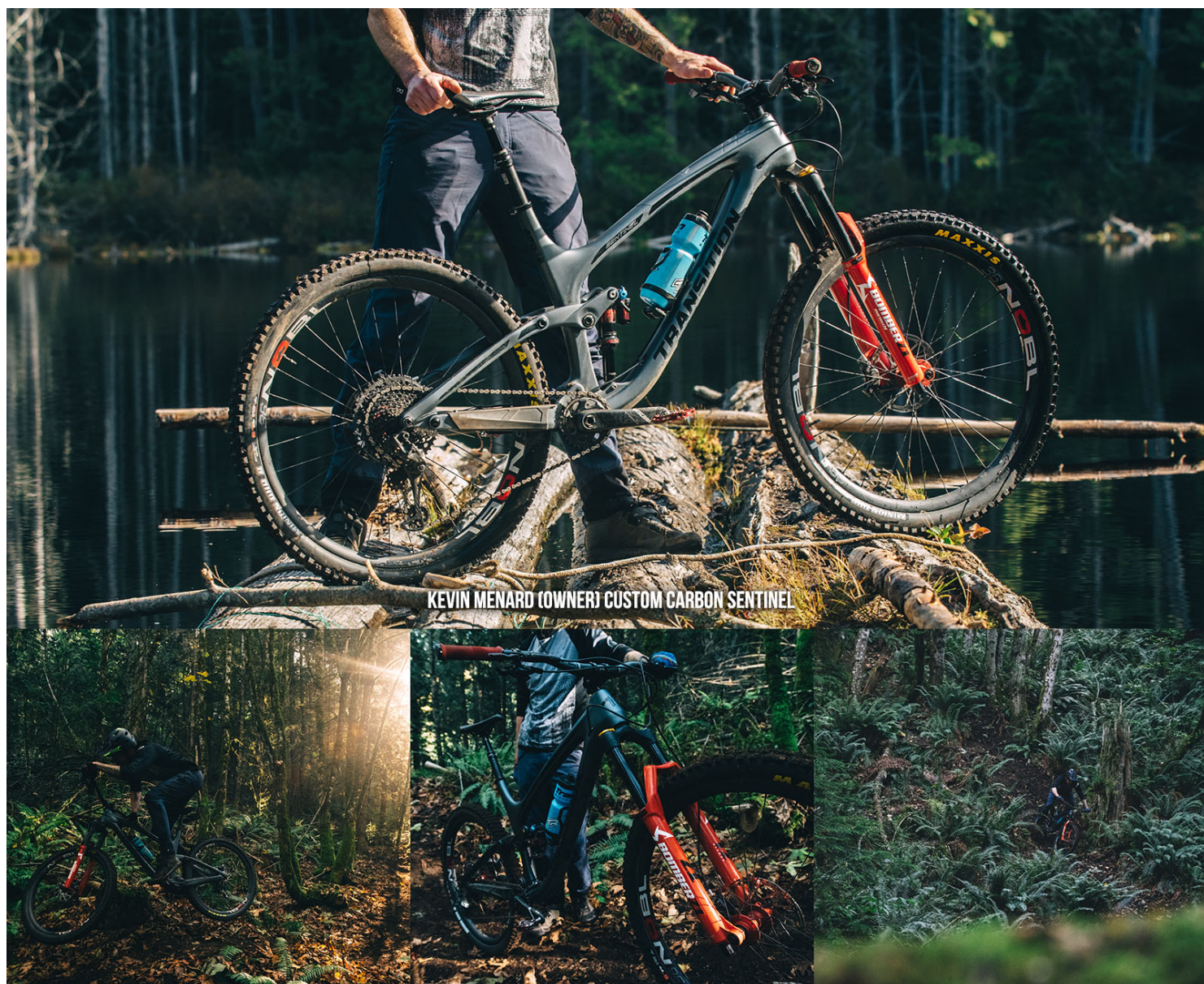
"THIS BIKE APPEARS TO BE THE FUTURE OF MTB. IT WAS NOT SO LONG AGO WE DREAMED OF A BIKE THAT HAD THE CAPABILITY OF SPEED, HANDLING, DESCENDING AND CLIMBING. A BIKE YOU COULD TAKE OUT OF THE SHED AND DO IT ALL; RIDE IT ONE WEEKEND AND RACE IT THE NEXT. WELL PEOPLE, THIS IS THE REAL DEAL AND NO DOUBT ONE OF THE MOST CAPABLE ALL-ROUND SPEED MACHINES WE HAVE TESTED." - REVOLUTION MAGAZINE - [CLICK HERE FOR THE FULL REVIEW](#)



"IF THERE'S A DESIGN-FOCUSED ARMS RACE OCCURRING IN MOUNTAIN BIKING, ONE NEEDS LOOK NO FURTHER THAN TRANSITION AS A KEY PROTAGONIST IN THE CURRENT PUSH TOWARD EVER-LONGER AND MORE-AGGRESSIVE GEOMETRY. IT SHOULD COME AS ABSOLUTELY NO SURPRISE THAT THE SENTINEL IS MOST AT HOME BOMBING DOWNHILL. IT DOES THIS RIDICULOUSLY WELL, STRAIGHT-LINING THE ROUGHEST, UGLIEST, SKETCHIEST DESCENTS WITH A SUPREME CONFIDENCE THAT BORDERS ON DISDAIN." - THE BIKE BIBLE REVIEW - [CLICK HERE FOR THE FULL REVIEW](#)



"THE SENTINEL IS AN ABSOLUTE BEAST WHEN IT COMES TIME TO DESCEND, A DOWNRIGHT MONSTER WHEN THE TRAIL TURNS STEEP AND ROUGH. THERE ARE PLENTY OF LONG-TRAVEL 29ERS OUT THERE THAT CAN HANDLE THE WHISTLER BIKE PARK, BUT WHEN IT COMES TO TACKLING THE STEEPEST, CHUNKIEST TRAILS THERE AREN'T MANY THAT CAN MATCH THE SENTINEL'S PERFORMANCE. " - MIKE KAZIMER (PINKBIKE.COM) - [CLICK HERE FOR THE FULL REVIEW](#)



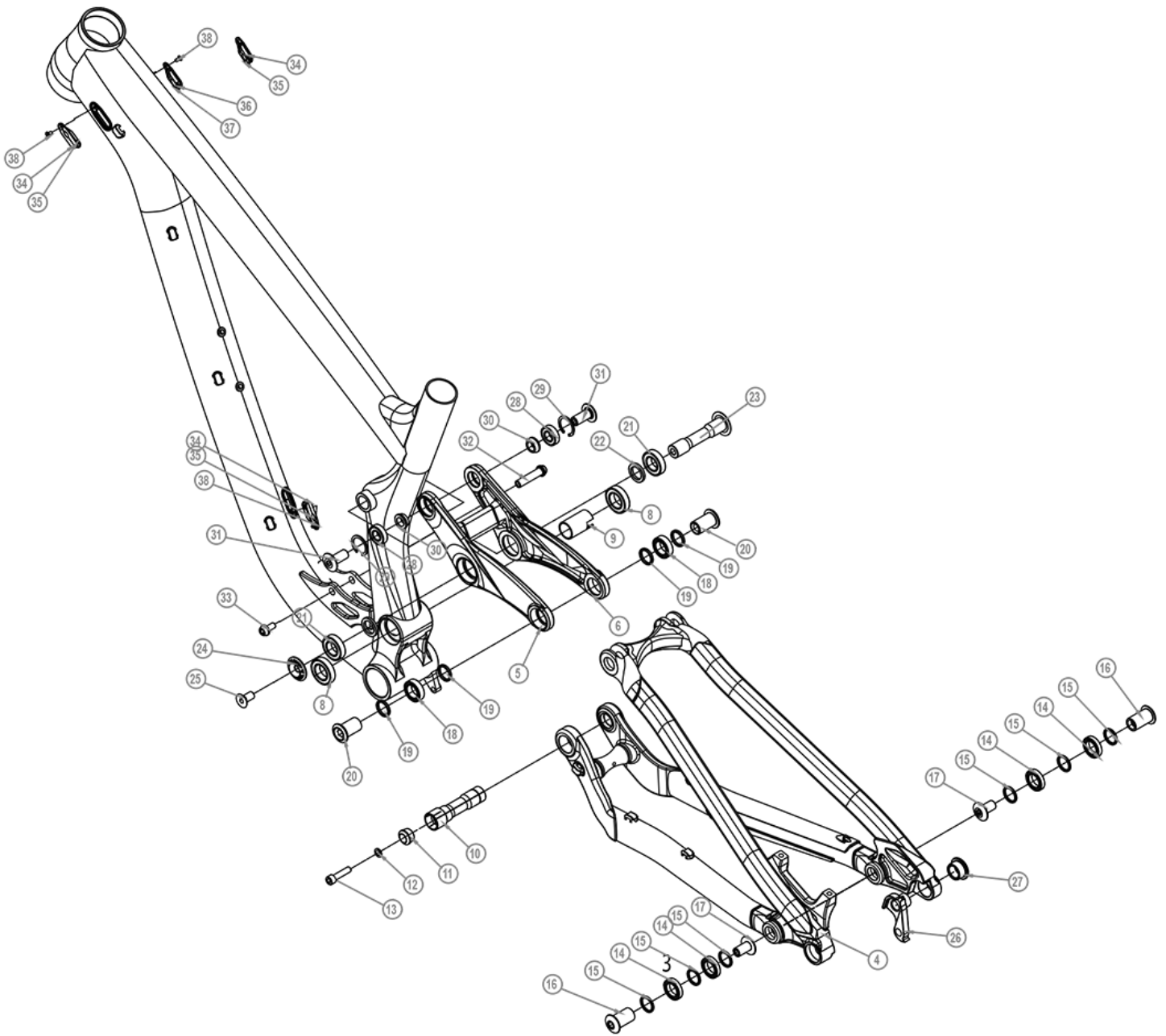
FRAME FEATURES

[DOWNLOAD FRAME EXPLODED VIEW](#)

[SUSPENSION SETUP GUIDE](#)

FORK AXLE TO CROWN	571mm
FORK OFFSET	42mm (Rockshox) / 44mm (Fox)
REAR SHOCK SIZE	205mm x 575mm
REAR SHOCK HARDWARE	Trunion Bearing Mount Top / 25mm x 8mm Bottom
BEARINGS	Full EnduroMax Sealed Cartridge Bearings
HEADSET	44mm Zero Stack (Top) / 56mm Zero Stack (Bottom)

BOTTOM BRACKET	73mm BSA Threaded
REAR BRAKE	180mm Post Mount
REAR AXLE	Syntace X12 148
FRONT DERAILLEUR	No Support
ISCG TABS	ISCG05
SEATPOST DIAMETER	31.6mm
MAX SEATPOST INSERTION ALLOY	Small 190mm, Medium 230mm, Large 270mm, XL/XXL 300mm
MAX SEATPOST INSERTION CARBON	Small 190mm, Medium 225mm, Large 245mm, XL 245mm
SEAT CLAMP	Alloy 34.9mm/Carbon 37mm
MAXIMUM CHAINRING	34t
MAXIMUM TIRE	29 x 2.5
SAG SETUP	18-20mm [32-35%]
FRAME WEIGHT (Medium with Shock/Axle/Hardware)	Carbon 7.05 lbs. - 3.2 Kg Alloy 9.61 lbs. - 4.36 Kg
WARRANTY	3 YEAR WE GOT YOUR BACK WARRANTY



ABOUT US

FACTORY STORE

TRANSITION BICYCLE COMPANY
1600 Carolina Street
Bellingham, WA 98229

(360) 366-4960

info@transitionbikes.com

BIKES

TR11

SENTINEL

PATROL

SCOUT

SMUGGLER

THROTTLE

VANQUISH

RIPCORD

PBJ

COMPONENTS

STEMS

SADDLES

HANDLEBARS

GRIPS

PEDALS

GEAR

CLOTHING

ACCESSORIES

SUPPORT PARTS

USED DEMO BIKES

DEMO

SCHEDULE A FACTORY DEMO

DEMO EVENTS

DEALERS

FIND A DEALER

INTERNATIONAL DISTRIBUTORS

SUPPORT

BIKE ARCHIVE

WARRANTY

REGISTER YOUR BIKE

TERMS & CONDITIONS

RETURN POLICY