

SCOUT ALLOY GX



If you're looking for the best parts you can get for a great price, our Scout Alloy GX will tick every box. We know suspension performance is king so we give you the same Fox fork and rear shock we spec on our top of the line XO1 builds. The drivetrain is GX Eagle with a massive gear range that is the new standard for performance and value. We finish the build with rock-solid Stan's Flow S1 Team complete wheelset and the best Maxxis Minion 3C tires you can buy. The Scout Alloy GX is a true riders bike that wants top performing parts that can appreciate a tried and true alloy frameset that can charge all day.

AVAILABLE COLORS: DESERT TAN SLATE BLUE

\$3,999.00 USD

SELECT YOUR SIZE & COLOR:

X-SMALL/SLATE BLUE (PREORDER NOW) ▼

PREORDER

FIND A DEALER

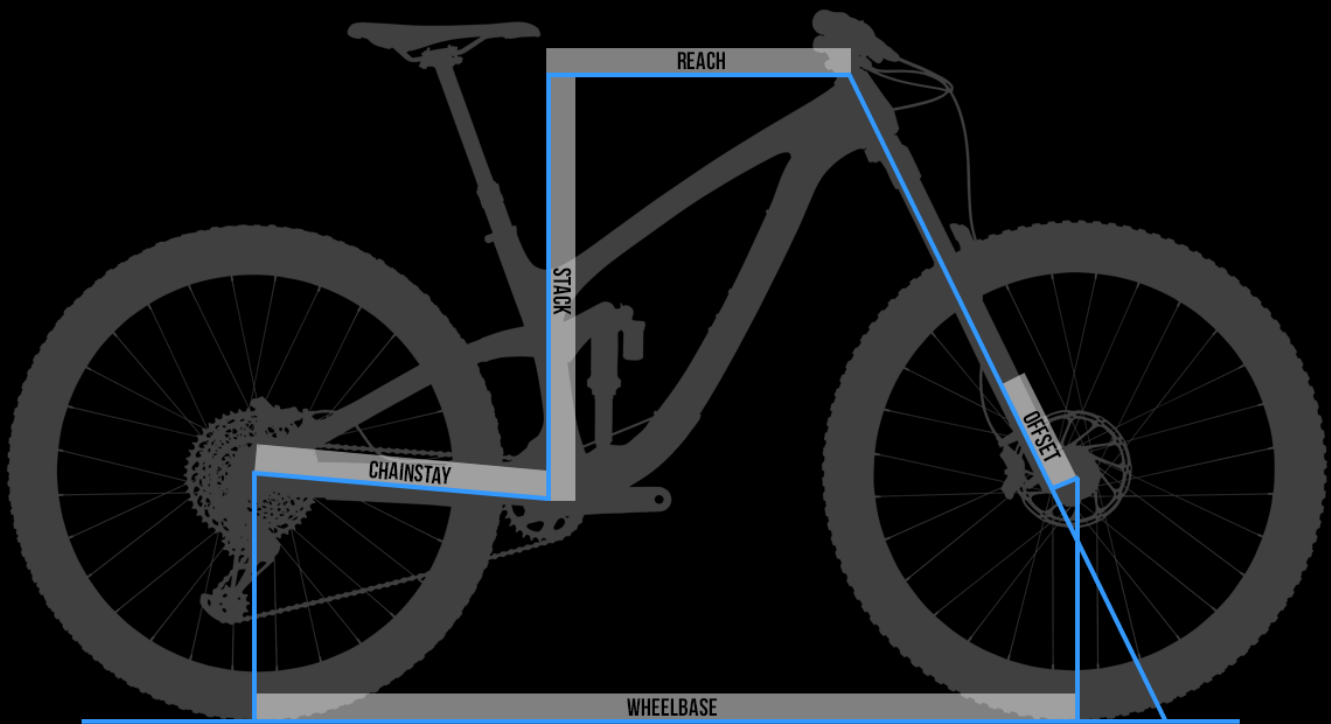
PREORDER AVAILABILITY:

Pre Order information is not available at this time. Please contact us for more information about product availability.

	SCOUT ALLOY GX	SCOUT ALLOY NX
PRICE	\$3999 USD	\$2999 USD
FRAME	Scout Alloy 130mm Rear/150mm Front	Scout Alloy 130mm Rear/150mm Front
REAR SHOCK	Fox DPX2 Performance	RockShox Deluxe RT
FORK	Fox 36 Grip Performance 150mm	Rockshox Revelation RC 150mm
HEADSET	FSA No.57E	FSA No.57E
STEM	RaceFace Aeffect R (40mm)	RaceFace Aeffect R (40mm)
HANDLEBAR	RaceFace Chester 35 XS (760 x 10mm) SM (780 x 20mm) MD/LG/XL (780 x 35mm)	RaceFace Chester 35 XS (760 x 10mm) SM (780 x 20mm) MD/LG/XL (780 x 35mm)
GRIPS	ODI Elite Flow	Velo VLG-1812D2
SADDLE	ANVL Forge Cromo	WTB Silverado Comp
SEATPOST	RockShox Reverb Stealth XS (100mm) SM (125mm) MD (150mm) LG/XL (170mm)	KS Lev Si XS (100mm) SM (125mm) MD/LG/XL (150mm)
BRAKES	SRAM Guide R	SRAM Level T
ROTORS	SRAM Centerline (180mm)	SRAM Centerline (180mm)
SHIFTER	SRAM GX Eagle	SRAM NX Eagle
DERAILLEUR	SRAM GX Eagle	SRAM NX Eagle

CASSETTE	SRAM XG 1275 (10-50t)	SRAM PG 1230 (11-50t)
CHAIN	SRAM GX Eagle	SRAM NX Eagle
CRANK	SRAM Stylo 7K DUB (170mm x 32t)	SRAM NX Eagle DUB (170mm x 32t)
WHEELSET	Stans Flow S1 Team	WTB STi29/Novatech D791SB/D462SB
TIRE/FRONT	Maxxis Minion DHF 3C WT (27.5x2.5)	Maxxis Minion DHF Dual WT (27.5x2.5)
TIRE/REAR	Maxxis Minion DHRII 3C WT (27.5x2.4)	Maxxis Minion DHRII Dual WT (27.5x2.4)
WEIGHT	32.25 lbs / 14.63 kg	33.30 lbs / 15.11 kg

[VIEW BIKE](#)



SPEED BALANCED GEOMETRY

SBG ensures the bike maintains low speed agility, front wheel traction, and proper rider weight balance while actually increasing confidence in steep terrain and at high speeds. With SBG, a slacker head tube angle is combined with a all new reduced offset fork standard, preventing the front wheel from being too far in front of the rider. This improves front to rear weight distribution on the bike, which is often out of balance on long and slack bikes. One of SBG's greatest benefits is that it creates a confident steering feel

that adapts to wheel speed. More stability when going fast, more agility on technical slow speed maneuvering as well as improved traction, control and confidence for any skill level of rider.

[LEARN MORE ABOUT SBG](#)

	XS	SM	MD	LG	XL
REACH	400	425	450	475	500
STACK	589	598	607	617	626
EFFECTIVE TT LENGTH	547	575	603	632	660
SEAT TUBE LENGTH	355	380	410	450	495
EFFECTIVE ST ANGLE	76.6	76.1	75.5	75	74.6
HEAD TUBE LENGTH	100	110	120	130	140
HEAD TUBE ANGLE	65.0	65.0	65.0	65.0	65.0
CHAINSTAY LENGTH	425	425	425	425	425
WHEELBASE	1131	1160	1189	1218	1247
BOTTOM BRACKET DROP	20	20	20	20	20
ESTIMATED BB HEIGHT	335	335	335	335	335
STAND OVER HEIGHT	675	675	685	695	710
FORK OFFSET	37	37	37	37	37
INEFFECTIVE TOPTUBE*	1.361	1.442	1.523	1.604	1.685
DOWNTUBE ANGLE	60	60	60	60	60
STANCE**	680	680	680	680	680
ROCKER EYE TO EYE	165	165	165	165	165

[CHECK OUT OUR SIZING GUIDE](#)

*Measured In Parsers

**Size 9 Foot (Measured In Flip Flops)

GIDDYUP 2.0HH SUSPENSION

Take our successful GiddyUp suspension system, add one part increased pedaling efficiency, two parts wider sag range, and three parts increased small bump sensitivity, and you get GiddyUp 2.0HH. Incredible pedaling performance balanced with a superb neutral, comfortable and fun feel that we're known for.

We specifically tuned the suspension with a moderate amount of chain growth which is highest at the sag point and decreasing deeper into the travel. Because of this finely tuned wheel path, there is a notable increase in traction when climbing, without the rider noticing the chain growth fighting the suspension movement.

GiddyUp 2.0HH is extremely easy to setup and it provides excellent support throughout the entire stroke of the shock so you can use all your travel without worrying about bottom out. Designed to be active while climbing, rear shock climbing platforms are not necessary. The suspension remains free to smooth out the trail, improve traction and control without sacrificing efficiency. With GiddyUp 2.0HH you can focus on the trail, no remotes, levers or knobs. Just grab your bike and GiddyUp.



Searching for the Limit / Transition Scout

by TransitionBikeCompany



"FEW, IF ANY, BIKES IN THIS TRAVEL CLASS CAN MATCH THIS BIKE'S SKY-HIGH FUN FACTOR. THE SCOUT PUNCHES FAR ABOVE ITS WEIGHT CLASS ON THE DESCENT AND IS NOT SHY WHEN POINTED DOWN FAIRLY ROWDY TRAILS. OH YEAH, IT ALSO RAILS BERMS AND FLOW TRAILS WITH A BALANCED FEEL IN THE AIR.

THE TRANSITION SCOUT GX IS A KILLER TRAIL BIKE WITH AN ATTITUDE. THIS BICYCLE OFFERS A SUPREMELY FUN RIDE AND MAKES SENSE IN MANY APPLICATIONS. DOWNHILL PERFORMANCE IS AGGRESSIVE AND STABLE. THE SCOUT CAN PUNCH FAR ABOVE ITS WEIGHT CLASS THANKS TO ITS MINI-ENDURO FEEL. THE CLIMBING ABILITIES ARE GOOD ENOUGH TO GET YOU ON TOP OF ANY CLIMB. THIS FUN-LOVING, AGGRESSIVE, TRAIL BIKE SELLS FOR A REASONABLE \$3999 WITH STELLAR COMPONENTS - WE LOVE IT." - OUTDOOR GEAR LAB [CLICK HERE FOR THE FULL REVIEW](#)



SKYE SCHILLHAMMER (MEDIA GUY) CUSTOM SCOUT ALLOY



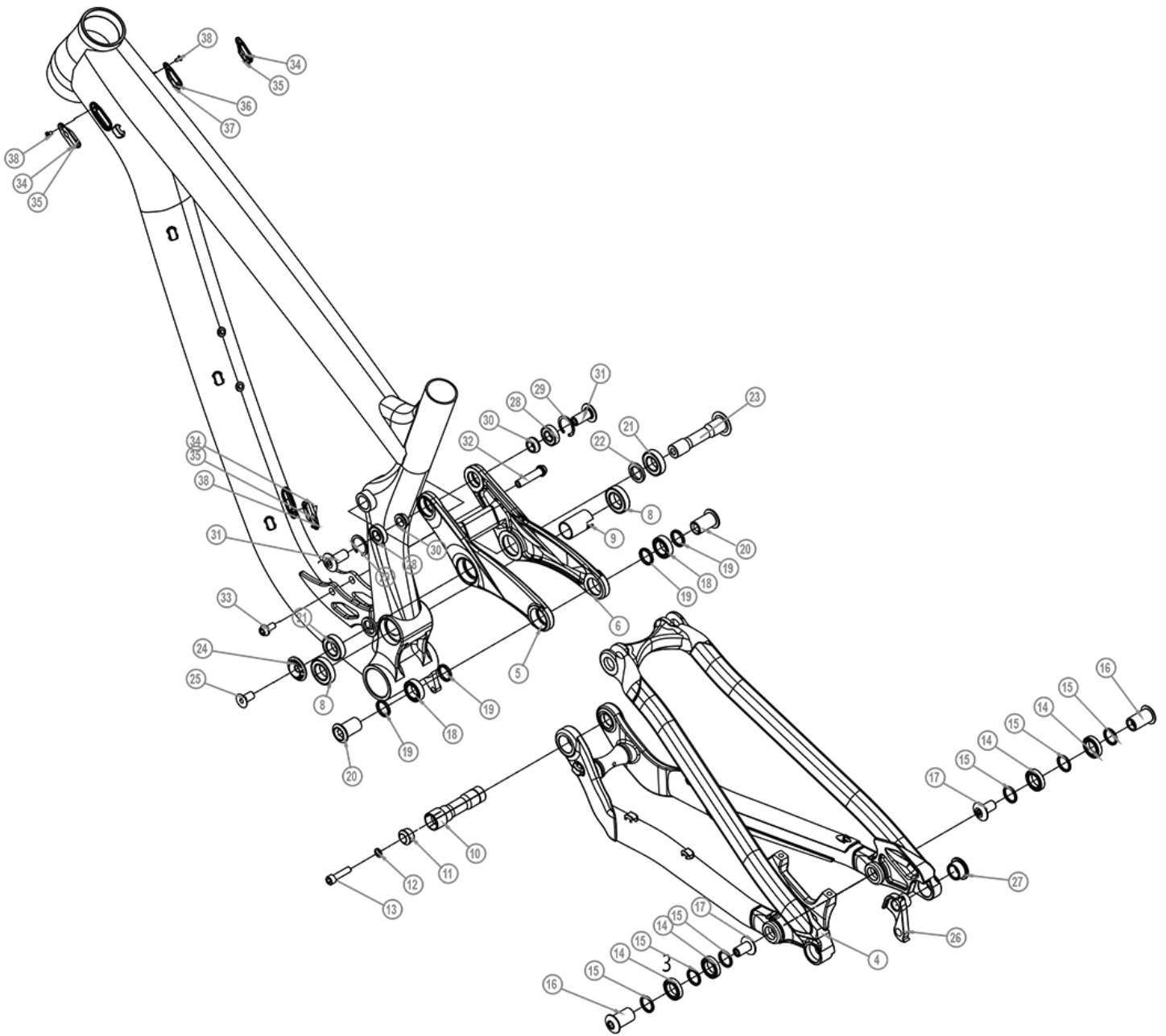
FRAME & TECH INFO

[DOWNLOAD FRAME EXPLODED VIEW](#)

[SUSPENSION SETUP GUIDE](#)

FORK AXLE TO CROWN	542mm
FORK OFFSET	37mm
REAR SHOCK SIZE	210mm x 55mm
REAR SHOCK HARDWARE	30mm x 8mm Top / 25mm x 8mm Bottom
HEADSET	44mm Zero Stack (Top) / 56mm Zero Stack (Bottom)
BOTTOM BRACKET	73mm BSA Threaded
REAR BRAKE	180mm Post Mount

REAR AXLE	Syntace X12 148
FRONT DERAILLEUR	No Support
ISCG TABS	ISCG05
SEATPOST DIAMETER	31.6mm
MAX SEATPOST INSERTION	XS 175mm, Small 200mm, Medium 230mm, Large 270mm, XL 300mm
SEAT CLAMP	34.9mm
MAXIMUM CHAINRING	34t
MAXIMUM TIRE	27.5 x 2.8
SAG SETUP	17-19mm [32-35%]
FRAME WEIGHT (Medium with Shock/Axle/Hardware)	8.99 lbs. / 4.08 Kg
WARRANTY	3 YEAR WE GOT YOUR BACK WARRANTY



ABOUT US
FACTORY STORE

TRANSITION BICYCLE COMPANY
1600 Carolina Street
Bellingham, WA 98229

(360) 366-4960

info@transitionbikes.com

BIKES

TR11

SENTINEL

PATROL

SCOUT

SMUGGLER

THROTTLE

VANQUISH

RIPCORD

PBJ

COMPONENTS

STEMS

SADDLES

HANDLEBARS

GRIPS

PEDALS

GEAR

CLOTHING

ACCESSORIES

SUPPORT PARTS

USED DEMO BIKES

DEMO

SCHEDULE A FACTORY DEMO

DEMO EVENTS

DEALERS

FIND A DEALER

INTERNATIONAL DISTRIBUTORS

SUPPORT

BIKE ARCHIVE

WARRANTY

REGISTER YOUR BIKE

TERMS & CONDITIONS

RETURN POLICY