A mountain biker wearing a grey helmet, glasses, a grey long-sleeved shirt, and black shorts is riding a black mountain bike through a lush green forest. The rider is leaning forward, and the bike is in motion, with some motion blur on the wheels. The background is filled with tall trees and dense ferns.

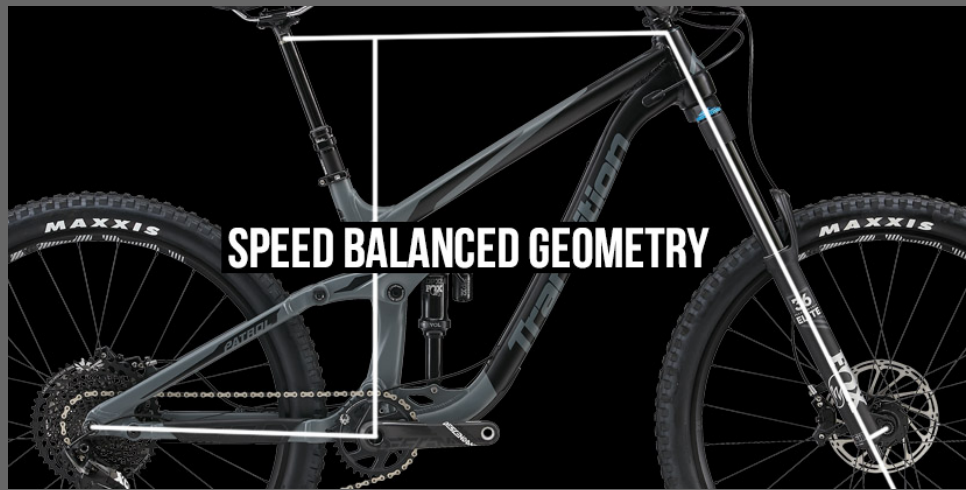
"MORE CONFIDENCE, MORE CONTROL, MORE PARTY"

PATROL

160MM REAR/170MM FRONT/27.5" WHEELS



How do you improve on mountain bike of the year? Easy, give it more control, more confidence and more party. Our most popular bike continues to push the boundaries of what is possible to ride on a long travel trail bike. An efficient well mannered ascender that immediately switches into pure party mode on the way down. Our Speed Balanced Geometry creates a super slack bike that adds front wheel traction going up and down that will have you pushing your bike further than you ever thought possible.





12X148 BOOST REAR END



RATTLE FREE CABLE ROUTING



FULL WATER BOTTLE STORAGE



TRUNION SHOCK MOUNT

VITALMTB

"FOLLOWING EXTENSIVE BACK-TO-BACK TESTING I CAN CONFIDENTLY SAY THAT TRANSITION'S SBG-EQUIPPED BIKES WILL LIKELY LEAD THE NEXT WAVE IN THE CONTINUED EVOLUTION OF BICYCLE GEOMETRY. THEY PROVIDE SUCH AN INTUITIVE AND CONTROLLED EXPERIENCE THAT MY RIDING GAME GOES UP A FEW NOTCHES. THAT'S REAL PROGRESS. LOOKING THE BIKE OVER, NEARLY EVERY ASPECT OF AN ALREADY AWESOME FRAME HAS BEEN UPDATED, TWEAKED, OR TUNED FOR 2018. THIS IS TRANSITION 2.0, AND IT'S AWESOME. - BRANDON TURMAN" [CLICK HERE FOR THE FULL REVIEW](#)



A day on Patrol

from Transition Bikes



02:47



vimeo

SBG

SPEED BALANCED GEOMETRY



SPEED BALANCED GEOMETRY

SBG ensures the bike maintains low speed agility, front wheel traction, and proper rider weight balance while actually increasing confidence in steep terrain and at high speeds. With SBG, a slacker head tube angle is combined with a all new reduced offset fork standard, preventing the front wheel from being too far in front of the rider. This improves front to rear weight distribution on the bike, which is often out of balance on long and slack bikes. One of SBG's greatest benefits is that it creates a confident steering feel that adapts to wheel speed. More stability when going fast, more agility on technical slow speed maneuvering as well as improved traction, control and confidence for any skill level of rider.

[LEARN MORE ABOUT SBG](#)

	XS	SM	MD	LG	XL
REACH	400	425	450	475	500
STACK	596	596	605	614	623
EFFECTIVE TT LENGTH	530	555	583	611	640
SEAT TUBE LENGTH	360	360	400	440	490
EFFECTIVE ST ANGLE	78.4	77.8	77.1	76.6	76.1
HEAD TUBE LENGTH	100	100	110	120	130
HEAD TUBE ANGLE	64.0	64.0	64.0	64.0	64.0
CHAINSTAY LENGTH	430	430	430	430	430
WHEELBASE	1154	1179	1209	1238	1268
BOTTOM BRACKET DROP	15	15	15	15	15

ESTIMATED BB HEIGHT

340

340

340

340

340

STAND OVER HEIGHT

680

680

685

695

710

FORK OFFSET

37

37

37

37

37

[CHECK OUT OUR SIZING GUIDE](#)



BUILD THE PATROL

SPEC: X01 GX NX FRAME ONLY

COLOR: STORM GREY PONDEROSA GREEN

PRICE: \$4,999

[FIND A DEALER](#)

[BUY ON OUR STORE](#)

	X01 COMPLETE	GX COMPLETE	NX COMPLETE
PRICE	\$4999 USD	\$3999 USD	\$2999 USD
COLOR	Storm Grey, Ponderosa Green	Storm Grey, Ponderosa Green	Storm Grey, Ponderosa Green
REAR SHOCK	Fox DPX2 Performance Elite	Fox DPX2 Performance Elite	RockShox Deluxe RT
FORK	Fox 36 Float RC2 Performance Elite 170mm	RockShox Lyrik RC Solo Air 170mm	RockShox Yari RC Solo Air 170mm
HEADSET	Cane Creek 40 Series	FSA No.57E	FSA No.57E
STEM	RaceFace Turbine R 35 (40mm)	RaceFace Aeffect R (40mm)	RaceFace Aeffect R (40mm)
BAR	RaceFace Turbine R 35 (800mm x 35mm)	RaceFace Chester 35 (780mm x 35mm)	RaceFace Chester 35 (780mm x 35mm)
GRIPS	ODI Elite Flow	Velo Single Clamp	Velo Single Clamp
SADDLE	ANVL Forge Stealth Cromo	ANVL Forge Stealth Cromo	WTB Volt Comp
SEATPOST	RockShox Reverb Stealth 1x Remote	RockShox Reverb Stealth	RaceFace Aeffect Dropper
BRAKES	SRAM Code RSC	SRAM Code R	SRAM Level T
ROTORS	SRAM Centerline (180mm)	SRAM Centerline (180mm)	SRAM Centerline (180mm)
SHIFTER	SRAM X01 Eagle	SRAM GX Eagle	SRAM NX
DERAILLEUR	SRAM X01 Eagle	SRAM GX Eagle	SRAM NX
CASSETTE	SRAM XG 1275 (10-50t)	SRAM XG 1275 (10-50t)	SRAM PG 1130 (11-42t)
CHAIN	SRAM GX Eagle	SRAM GX Eagle	SRAM PC 1110
CRANK	SRAM Descendent Carbon (32t, 170mm)	SRAM Descendent 6K (32t, 170mm)	RaceFace Aeffect (30t, 170mm)

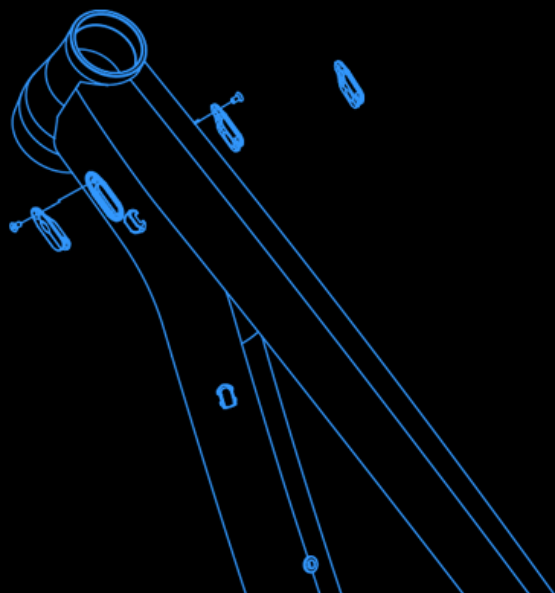
RIMS	E*Thirteen TRS+ 30mm	E*Thirteen TRS 30mm	WTB STPi29
HUBS	E*Thirteen TRS+	Novatec D711SB & D462SB XD	Novatec D711SB & D462SB
TIRES	Maxxis Minion DHF / DHR II 2.3 EXO 3C	Maxxis Minion DHF / DHR II 2.3 EXO Dual	Maxxis Minion DHF / DHR II 2.3 EXO Dual
WEIGHT	31.8 lbs. / 14.42 Kg	32.2 lbs. / 14.61 Kg	33.2 lbs. / 15.06 Kg
FRAMESET			
PRICE	\$1999 USD		
COLOR	Ponderosa Green, Storm Grey		
REAR SHOCK	Fox DPX2 Performance Elite		

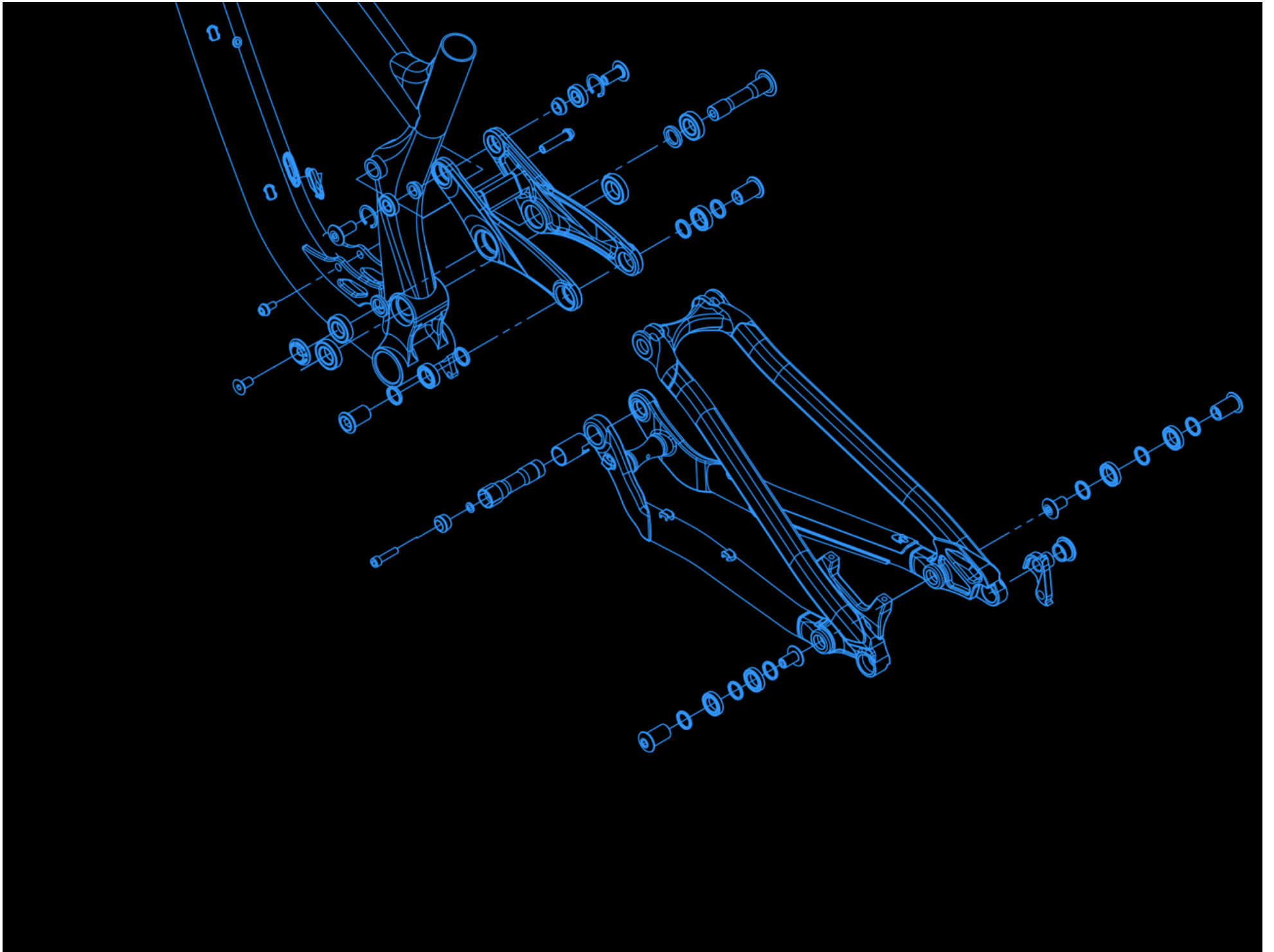
FRAME & TECH INFO

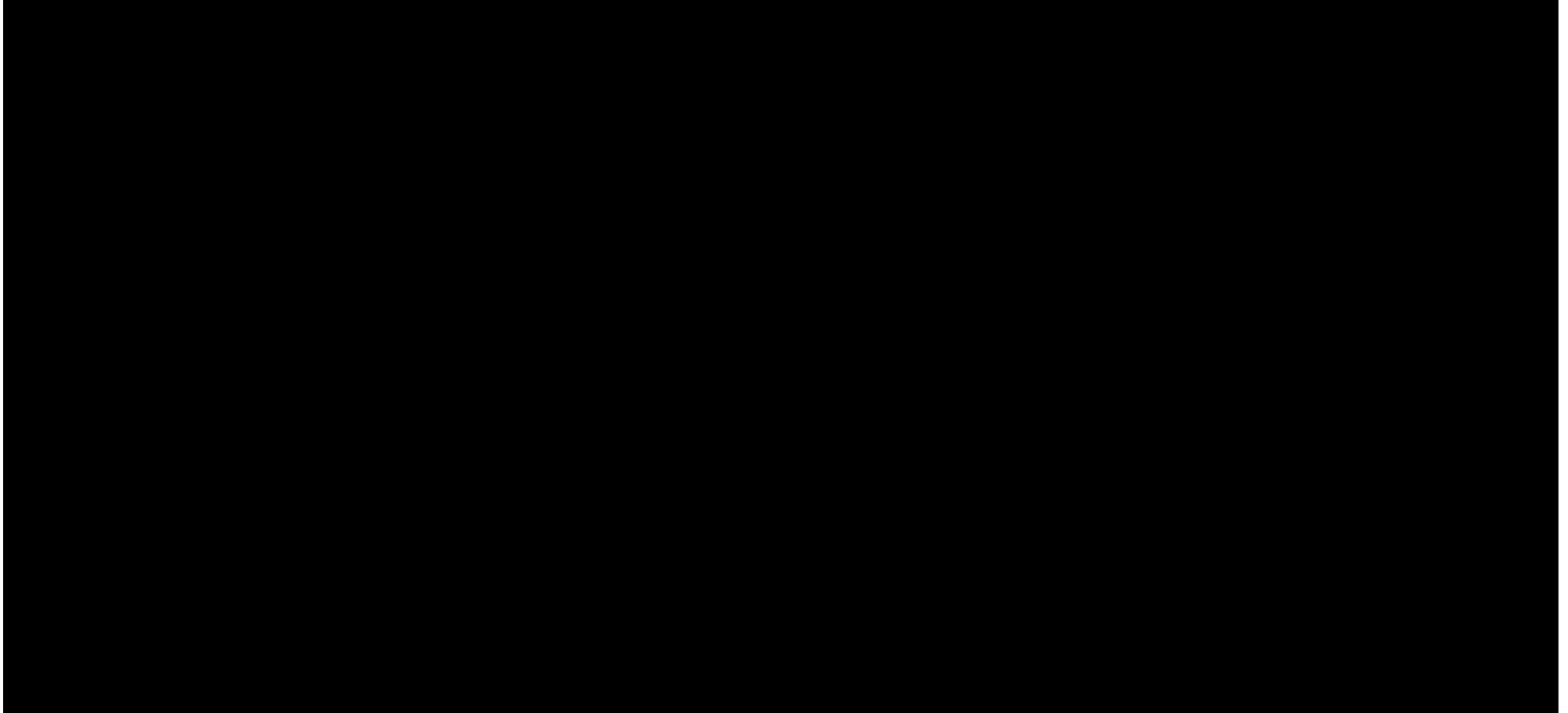
[DOWNLOAD FRAME EXPLODED VIEW](#)

FORK AXLE TO CROWN	562mm
FORK OFFSET	37mm
REAR SHOCK SIZE	205mm x 65mm
REAR SHOCK HARDWARE	Trunion Mount Top / 25mm x 8mm Bottom
HEADSET	44mm Zero Stack (Top) / 56mm Zero Stack (Bottom)
BOTTOM BRACKET	73mm BSA Threaded
REAR BRAKE	180mm Post Mount

REAR AXLE	Syntace X12 148
FRONT DERAILLEUR	No Support
ISCG TABS	ISCG05
SEATPOST DIAMETER	31.6mm
MAXIMUM SEATPOST INSERTION	XS 140mm, Small 145mm, Medium 185mm, Large 225mm, XL 270mm
SEAT CLAMP	34.9mm
MAXIMUM CHAINRING	34t
MAXIMUM TIRE	27.5 x 2.8
SAG SETUP	20-23mm [32-35%]
FRAME WEIGHT (Medium with Shock/Axle/Hardware)	9.3 lbs. / 4.22 Kg
WARRANTY	3 YEAR WE GOT YOUR BACK WARRANTY













YOU HAVE REACHED THE BOTTOM OF TRANSITIONBIKES.COM. IF YOU GET BORED DOWN HERE, [CLICK HERE](#) AND WE CAN TAKE YOU BACK TO THE TOP.