

“TURN MOUNTAINS INTO MOLE HILLS”

SENTINEL

140MM REAR / 160MM FRONT / 29" WHEELS





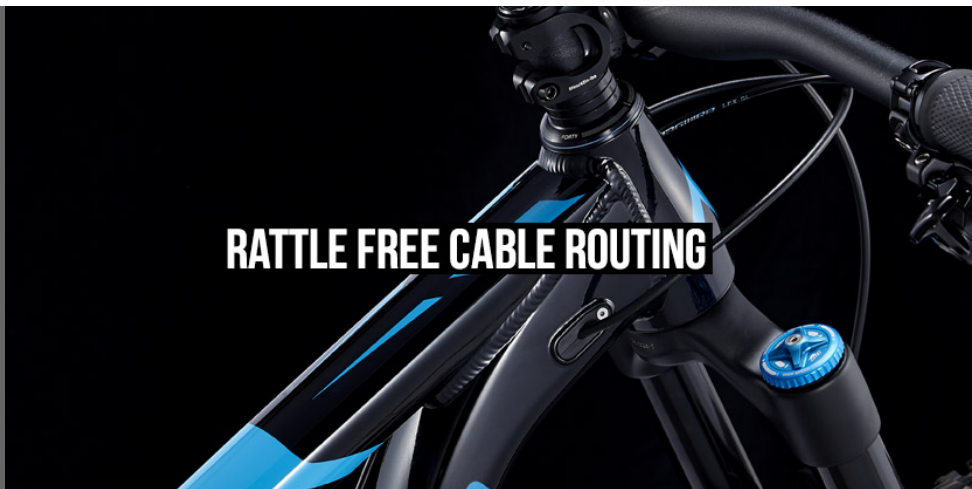


The Sentinel was designed for 29er haters. A bike so capable, playful and fun that even the most staunch 29er naysayer will instantly convert. With our reverse mullet suspension configuration, the Sentinel stays responsive and playful while delivering incredible downhill monster truck capabilities. Our new Speed Balanced Geometry is our crown jewel that unlocks 100% of the potential of this bike. With SBG you get total confidence when it comes to cornering and climbing that really sets this bike apart from the crowd.





12X148 BOOST REAR END



RATTLE FREE CABLE ROUTING



FULL WATER BOTTLE STORAGE



TRUNION SHOCK MOUNT



"THE SENTINEL IS AN ABSOLUTE BEAST WHEN IT COMES TIME TO DESCEND, A DOWNRIGHT MONSTER WHEN THE TRAIL TURNS STEEP AND ROUGH. THERE ARE PLENTY OF LONG-TRAVEL 29ERS OUT THERE THAT CAN HANDLE THE WHISTLER BIKE PARK, BUT WHEN IT COMES TO TACKLING THE STEEPEST, CHUNKIEST TRAILS THERE AREN'T MANY THAT CAN MATCH THE SENTINEL'S PERFORMANCE." - [CLICK HERE FOR THE FULL REVIEW](#)



Sentinel Shredding

from Transition Bikes



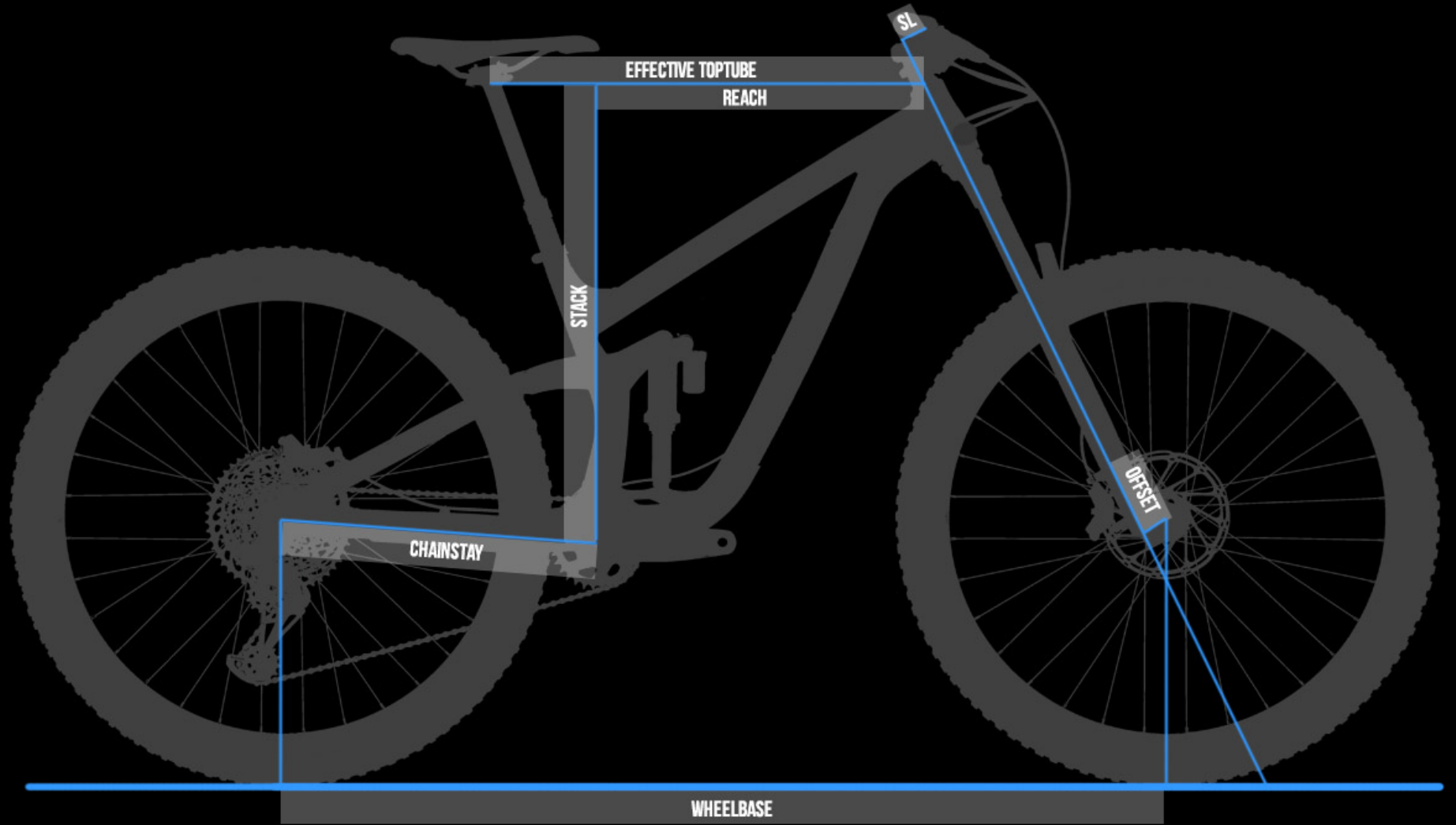
01:00

▶

📶 ⚙️ 🗄️ vimeo

SBG

SPEED BALANCED GEOMETRY



SPEED BALANCED GEOMETRY

SBG ensures the bike maintains low speed agility, front wheel traction, and proper rider weight balance while actually increasing confidence in steep terrain and at high speeds. With SBG, a slacker head tube angle is combined with a all new reduced offset fork standard, preventing the front wheel from being too far in front of the rider. This improves front to rear weight distribution on the bike, which is often out of balance on long and slack bikes. One of SBG's greatest benefits is that it creates a confident steering feel that adapts to wheel speed. More stability when going fast, more agility on technical slow speed maneuvering as well as improved traction, control and confidence for any skill level of rider.

[LEARN MORE ABOUT SBG](#)

	SM	MD	LG	XL
REACH	425	450	475	500
STACK	617	617	626	635
EFFECTIVE TT LENGTH	568	593	622	650
SEAT TUBE LENGTH	360	400	440	490
EFFECTIVE ST ANGLE	77.5	76.8	76.3	75.8
HEAD TUBE LENGTH	100	100	110	120
HEAD TUBE ANGLE	64.0	64.0	64.0	64.0
CHAINSTAY LENGTH	435	435	435	435
WHEELBASE	1193	1218	1247	1277
BOTTOM BRACKET DROP	30	30	30	30

ESTIMATED BB HEIGHT

345

345

345

345

STAND OVER HEIGHT

685

695

700

715

FORK OFFSET

43

43

43

43

[CHECK OUT OUR SIZING GUIDE](#)



BUILD THE SENTINEL

SPEC: X01 GX NX FRAME ONLY

COLOR: TR BLUE BLACK POWDER

PRICE: \$4,999

[FIND A DEALER](#)

[BUY ON OUR STORE](#)

	X01 COMPLETE	GX COMPLETE	NX COMPLETE
PRICE	\$4999 USD	\$3999 USD	\$2999 USD
COLOR	TR Blue, Black Powder	TR Blue, Black Powder	TR Blue, Black Powder
REAR SHOCK	Fox DPX2 Performance Elite	Fox DPX2 Performance Elite	RockShox Deluxe RT
FORK	Fox 36 Float RC2 Performance Elite 160mm	RockShox Lyrik RC Solo Air 160mm	RockShox Yari RC Solo Air 160mm
HEADSET	Cane Creek 40 Series	FSA No.57E	FSA No.57E
STEM	RaceFace Trubine R 35 (40mm)	RaceFace Aeffect R (40mm)	RaceFace Aeffect R (40mm)
BAR	RaceFace Turbine R 35 (800mm x 20mm)	RaceFace Chester 35 (780mm x 20mm)	RaceFace Chester 35 (780mm x 20mm)
GRIPS	ODI Elite Flow	Velo Single Clamp	Velo Single Clamp
SADDLE	ANVL Forge Stealth Cromo	ANVL Forge Stealth Cromo	WTB Volt Comp
SEATPOST	RockShox Reverb Stealth 1x Remote	RockShox Reverb Stealth	RaceFace Aeffect Dropper
BRAKES	SRAM Code RSC	SRAM Code R	SRAM Level T
ROTORS	SRAM Centerline (180mm)	SRAM Centerline (180mm)	SRAM Centerline (180mm)
SHIFTER	SRAM X01 Eagle	SRAM GX Eagle	SRAM NX
DERAILLEUR	SRAM X01 Eagle	SRAM GX Eagle	SRAM NX
CASSETTE	SRAM XG 1275 (10-50t)	SRAM XG 1275 (10-50t)	SRAM PG 1130 (11-42t)
CHAIN	SRAM GX Eagle	SRAM GX Eagle	SRAM PC 1110

CRANK	SRAM Descendent Carbon (30t, 170mm)	SRAM Descendent 6K (30t, 170mm)	RaceFace Aeffect (28t, 170mm)
RIMS	E*Thirteen TRS+ 30mm	E*Thirteen TRS 30mm	WTB STPi29
HUBS	E*Thirteen TRS+	Novatec D711SB & D462SB XD	Novatec D711SB & D462SB
TIRES	Maxxis Minion DHF / DHR II 2.3 EXO 3C	Maxxis Minion DHF / DHR II 2.3 EXO Dual	Maxxis Minion DHF / DHR II 2.3 EXO Dual
WEIGHT	32.2 lbs. / 14.61 Kg	32.6 lbs. / 14.79 Kg	33.6 lbs. / 15.24 Kg

FRAMESET

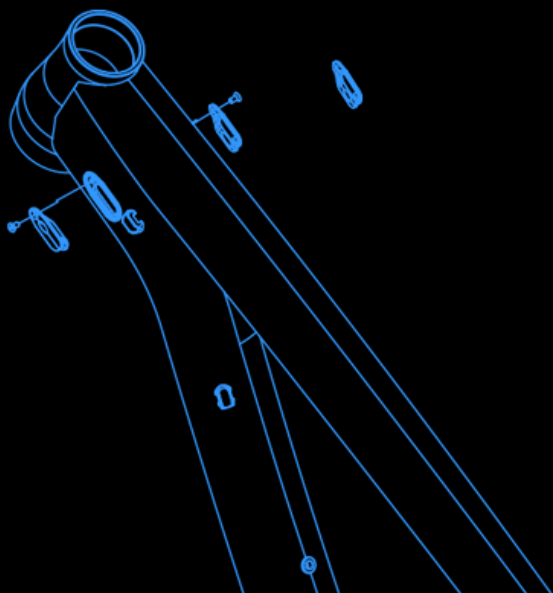
PRICE	\$1999 USD		
COLOR	TR Blue, Black Powder		
REAR SHOCK	Fox DPX2 Performance Elite		

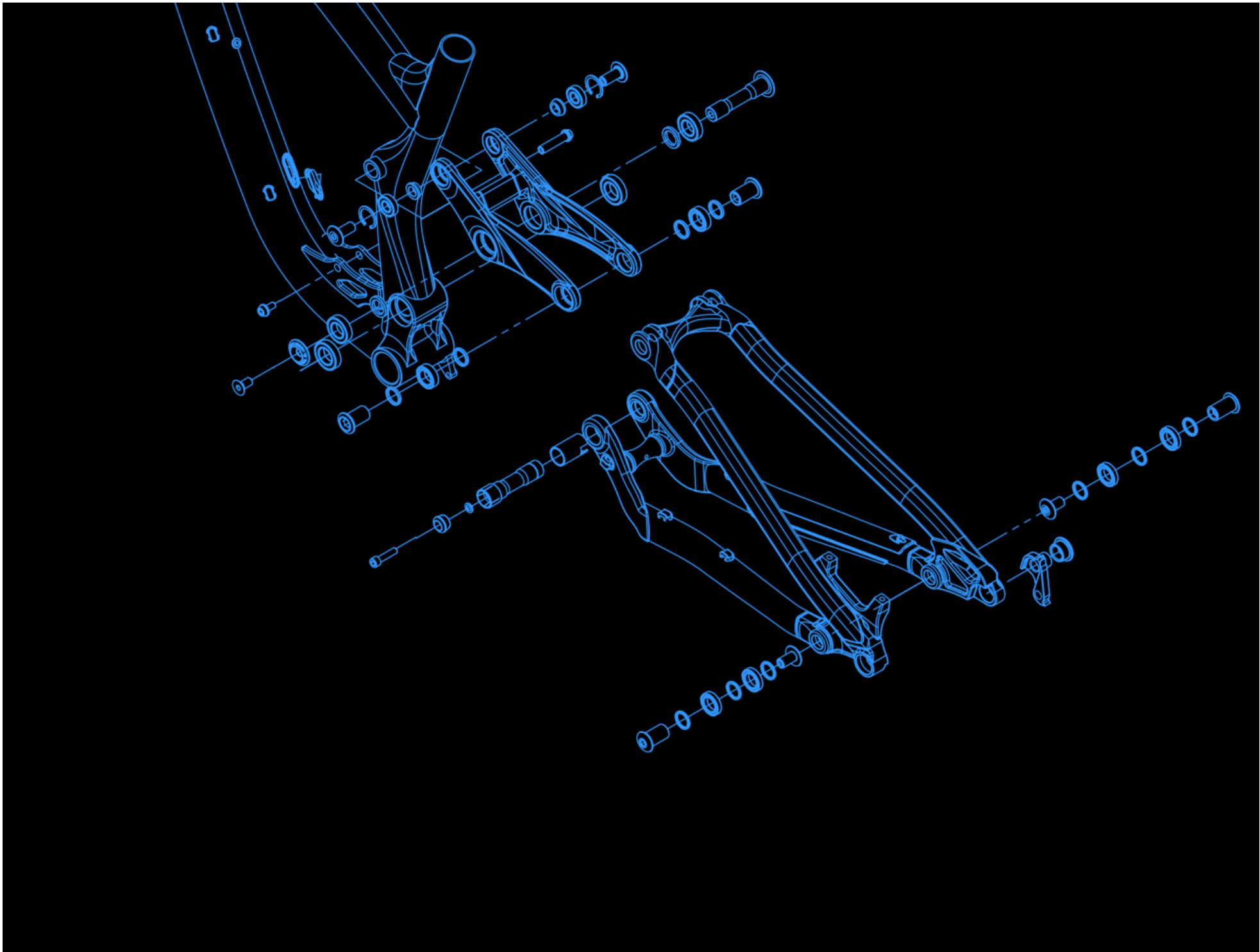
FRAME & TECH INFO

[DOWNLOAD FRAME EXPLODED VIEW](#)

FORK AXLE TO CROWN	571mm
FORK OFFSET	42mm [Rockshox] / 44mm [Fox]
REAR SHOCK SIZE	205mm x 57.5mm
REAR SHOCK HARDWARE	Trunion Mount Top / 25mm x 8mm Bottom
HEADSET	44mm Zero Stack [Top] / 56mm Zero Stack [Bottom]
BOTTOM BRACKET	73mm BSA Threaded
REAR BRAKE	180mm Post Mount

REAR AXLE	Syntace X12 148
FRONT DERAILLEUR	No Support
ISCG TABS	ISCG05
SEATPOST DIAMETER	31.6mm
MAXIMUM SEATPOST INSERTION	Small 140mm, Medium 185mm, Large 225mm, XL 270mm
SEAT CLAMP	34.9mm
MAXIMUM CHAINRING	34t
MAXIMUM TIRE	29 x 2.5
SAG SETUP	18-20mm (32-35%)
FRAME WEIGHT (Medium with Shock/Axle/Hardware)	9.3 lbs. / 4.22 Kg
WARRANTY	3 YEAR WE GOT YOUR BACK WARRANTY









YOU HAVE REACHED THE BOTTOM OF TRANSITIONBIKES.COM. IF YOU GET BORED DOWN HERE, [CLICK HERE](#) AND WE CAN TAKE YOU BACK TO THE TOP.