

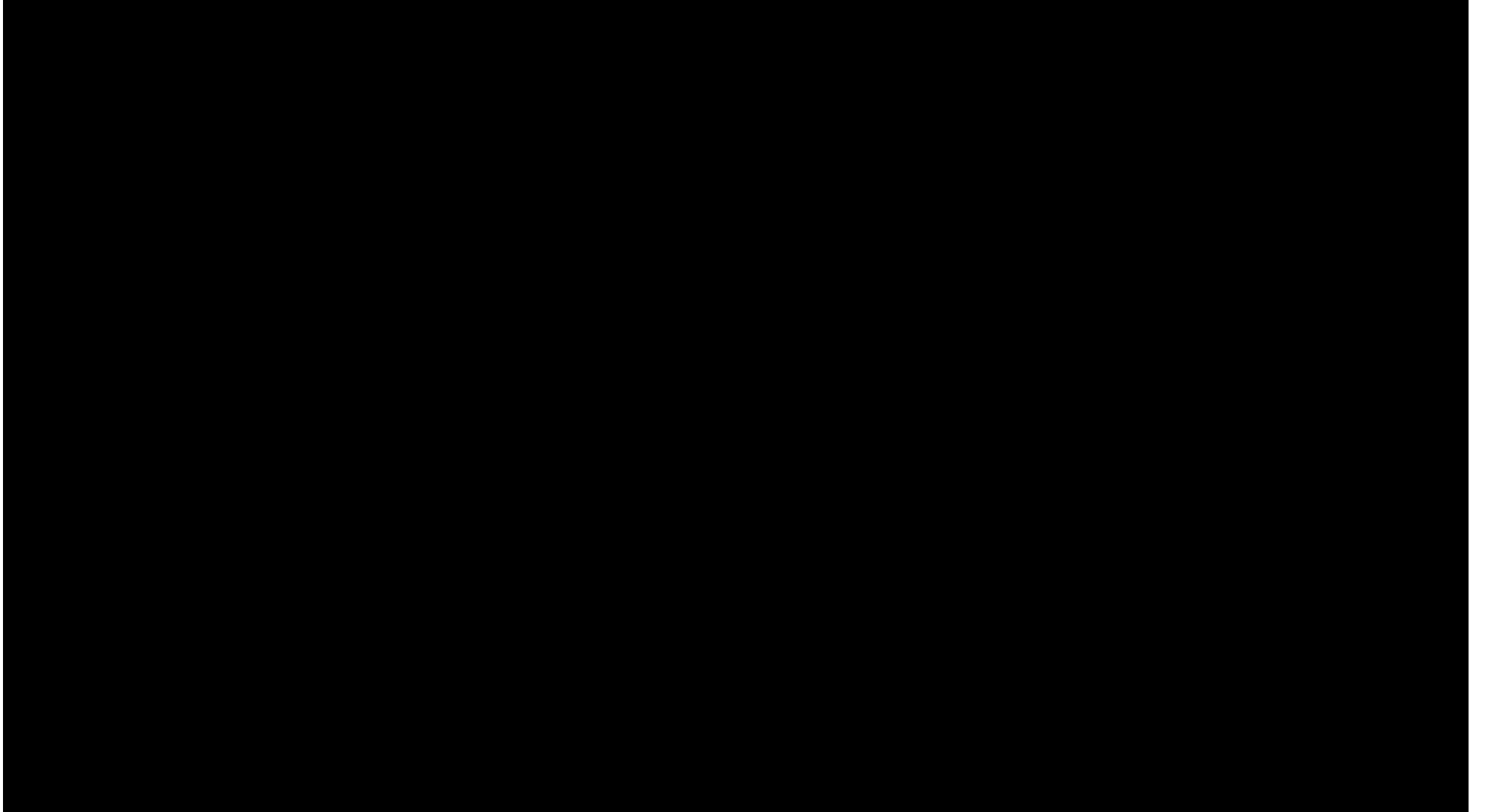
**“THE PERFECT AMOUNT OF EVERYTHING”**

# SCOUT

**130MM REAR/150MM FRONT/27.5" WHEELS**



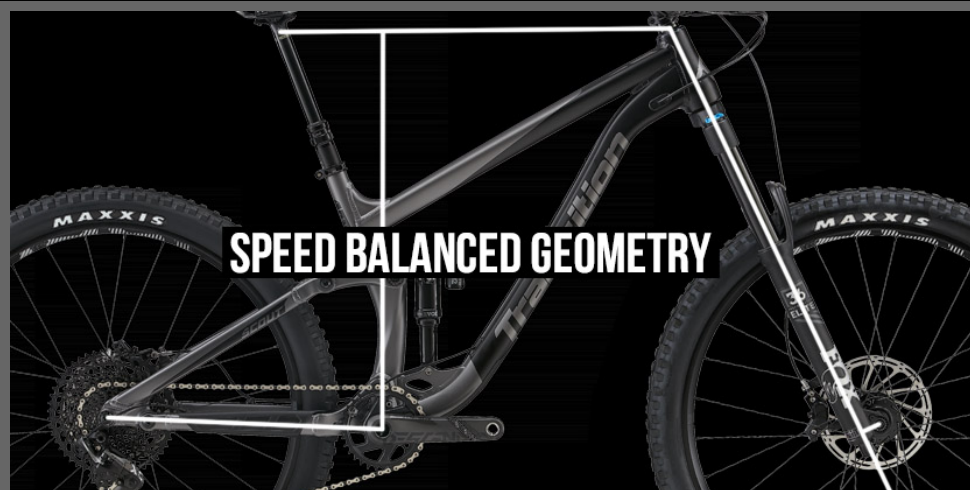








The Scout is our mid travel powerhouse that can get it done just about anywhere. Aggressive, playful, and efficient. The Scout performs magic by not feeling like it has too much travel and never leaves you wanting more. Amazing trail feel that loves to pedal but can turn into an absolute beast on descents whenever needed. The Scout has everything you need in a top level trail bike including full water bottle storage, industry leading seat post insertion and piggy back metric shock for long descents. All that and our new Speed Balanced Geometry that will help you take your riding to another level.







**12X148 BOOST REAR END**



**RATTLE FREE CABLE ROUTING**

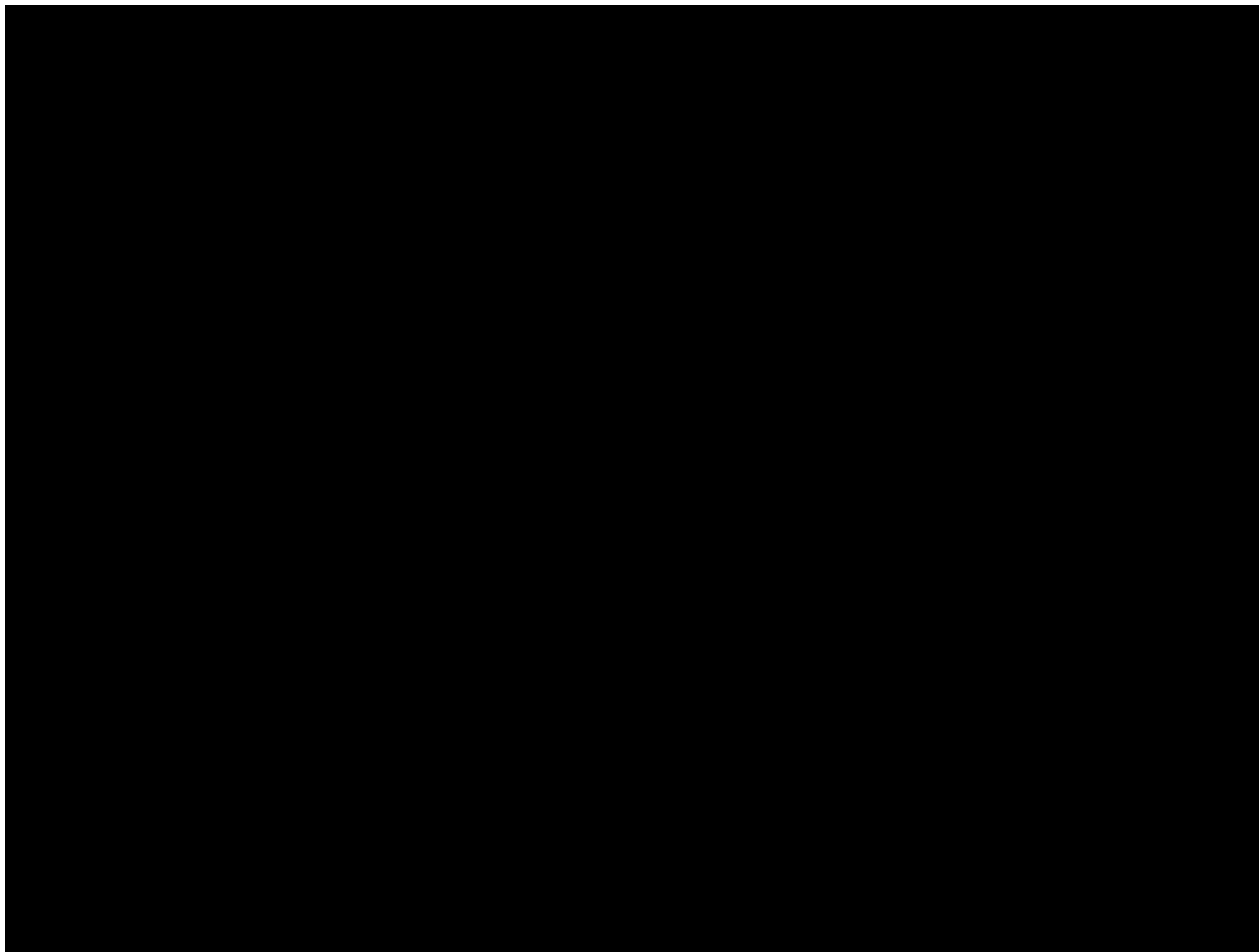


**FULL WATER BOTTLE STORAGE**



**UP TO 2.8" TIRE CLEARANCE**











# SPEED BALANCED GEOMETRY

SBG ensures the bike maintains low speed agility, front wheel traction, and proper rider weight balance while actually increasing confidence in steep terrain and at high speeds. With SBG, a slacker head tube angle is combined with a all new reduced offset fork standard, preventing the front wheel from being too far in front of the rider. This improves front to rear weight distribution on the bike, which is often out of balance on long and slack bikes. One of SBG's greatest benefits is that it creates a confident steering feel that adapts to wheel speed. More stability when going fast, more agility on technical slow speed maneuvering as well as improved traction, control and confidence for any skill level of rider.

[LEARN MORE ABOUT SBG](#)

	XS	SM	MD	LG	XL
REACH	400	425	450	475	500
STACK	589	598	607	617	626
EFFECTIVE TT LENGTH	547	575	603	632	660
SEAT TUBE LENGTH	355	380	410	450	495
EFFECTIVE ST ANGLE	76.6	76.1	75.5	75	74.6
HEAD TUBE LENGTH	100	110	120	130	140
HEAD TUBE ANGLE	65.0	65.0	65.0	65.0	65.0
CHAINSTAY LENGTH	425	425	425	425	425
WHEELBASE	1131	1160	1189	1218	1247
BOTTOM BRACKET DROP	20	20	20	20	20

ESTIMATED BB HEIGHT	335	335	335	335	335
STAND OVER HEIGHT	675	675	685	695	710
FORK OFFSET	37	37	37	37	37
<a href="#">CHECK OUT OUR SIZING GUIDE</a>					





# BUILD THE SCOUT

SPEC: ☒ X01 ☐ GX ☐ NX ☐ FRAME ONLY

COLOR: ☒ BLACK POWDER ☐ HABANERO ORANGE

PRICE: \$4,999

FIND A DEALER

BUY ON OUR STORE

	X01 COMPLETE	GX COMPLETE	NX COMPLETE
PRICE	\$4999 USD	\$3999 USD	\$2999 USD
COLOR	Black Powder, Habanero Orange	Black Powder, Habanero Orange	Black Powder, Habanero Orange
REAR SHOCK	Fox DPX2 Performance Elite	Fox DPX2 Performance Elite	RockShox Deluxe RT
FORK	Fox 36 Float Fit 4 Performance Elite 150mm	RockShox Pike RC Solo Air 150mm	RockShox Revelation RC Solo Air 150mm
HEADSET	Cane Creek 40 Series	FSA No.57E	FSA No.57E
STEM	RaceFace Turbine R 35 (40mm)	RaceFace Aeffect R (40mm)	RaceFace Aeffect R (40mm)
BAR	RaceFace Turbine R 35 (800mm x 35mm)	RaceFace Chester 35 (780mm x 35mm)	RaceFace Chester 35 (780mm x 35mm)
GRIPS	ODI Elite Flow	Velo Single Clamp	Velo Single Clamp
SADDLE	ANVL Forge Stealth Cromo	ANVL Forge Stealth Cromo	WTB Volt Comp
SEATPOST	RockShox Reverb Stealth 1x Remote	RockShox Reverb Stealth	RaceFace Aeffect Dropper
BRAKES	SRAM Guide RSC	SRAM Guide R	SRAM Level T
ROTORS	SRAM Centerline (180mm)	SRAM Centerline (180mm)	SRAM Centerline (180mm)
SHIFTER	SRAM X01 Eagle	SRAM GX Eagle	SRAM NX
DERAILLEUR	SRAM X01 Eagle	SRAM GX Eagle	SRAM NX
CASSETTE	SRAM XG 1275 (10-50t)	SRAM XG 1275 (10-50t)	SRAM PG 1130 (11-42t)
CHAIN	SRAM GX Eagle	SRAM GX Eagle	SRAM PC 1110
CRANK	SRAM Descendent Carbon (32t, 170mm)	SRAM Descendent 6K (32t, 170mm)	RaceFace Aeffect (30t, 170mm)

RIMS	E*Thirteen TRS+ 30mm	E*Thirteen TRS 30mm	WTB STPi29
HUBS	E*Thirteen TRS+	Novatec D711SB & D462SB XD	Novatec D711SB & D462SB
TIRES	Maxxis Minion DHF / DHR II 2.3 EXO 3C	Maxxis Minion DHF / DHR II 2.3 EXO Dual	Maxxis Minion DHF / DHR II 2.3 EXO Dual
WEIGHT	31.2 lbs. / 14.15 Kg	31.6 lbs. / 14.33 Kg	32.6 lbs. / 14.79 Kg
FRAMESET			
PRICE	\$1999 USD		
COLOR	Habanero Orange, Black Powder		
REAR SHOCK	Fox DPX2 Performance Elite		

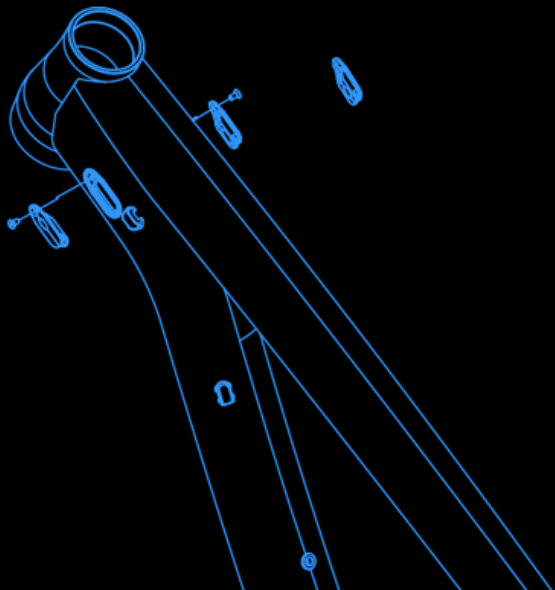
# FRAME & TECH INFO

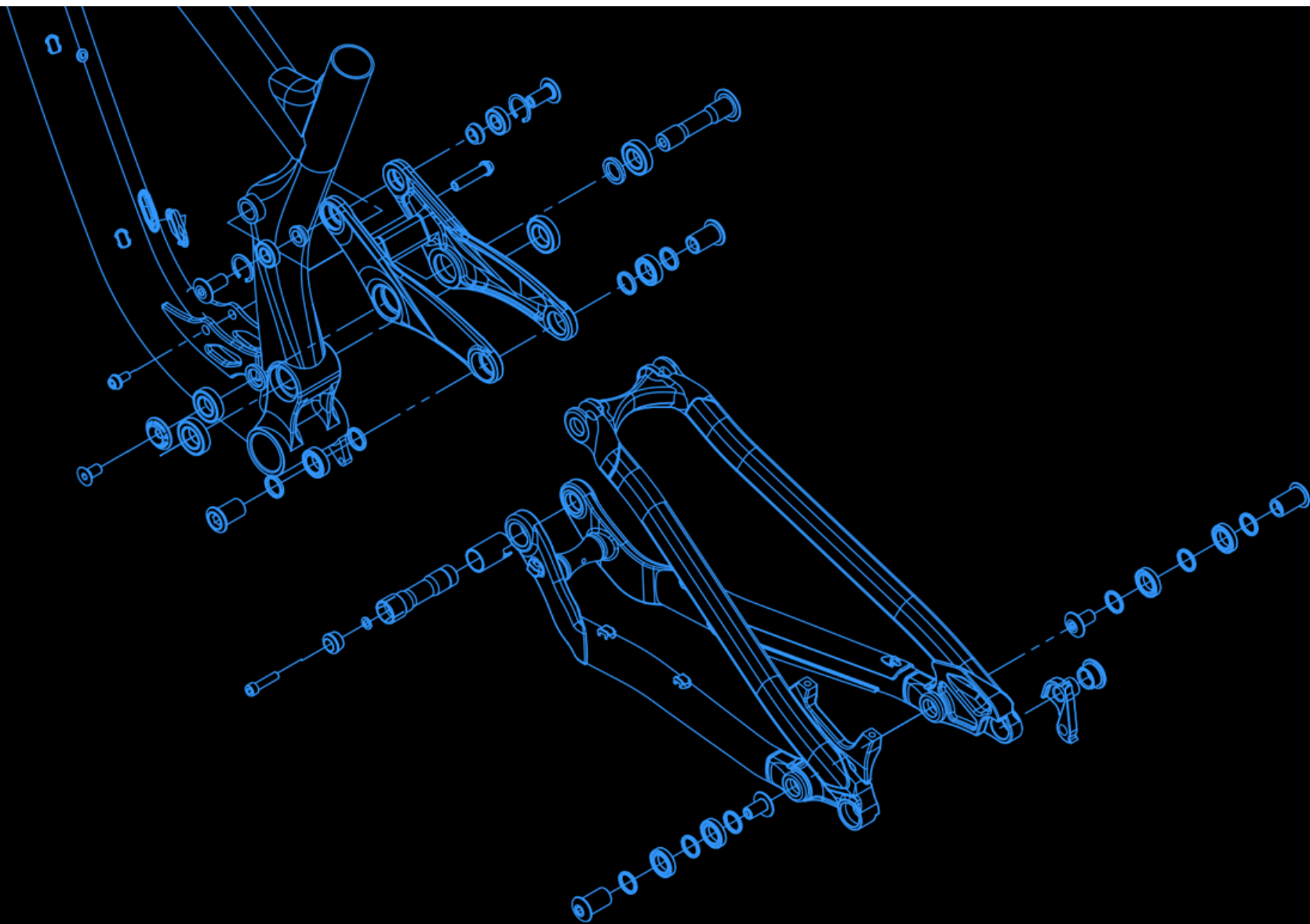
DOWNLOAD FRAME EXPLODED VIEW

FORK AXLE TO CROWN	542mm
FORK OFFSET	37mm
REAR SHOCK SIZE	210mm x 55mm
REAR SHOCK HARDWARE	30mm x 8mm Top / 25mm x 8mm Bottom
HEADSET	44mm Zero Stack (Top) / 56mm Zero Stack (Bottom)
BOTTOM BRACKET	73mm BSA Threaded
REAR BRAKE	180mm Post Mount



REAR AXLE	Syntace X12 148
FRONT DERAILLEUR	No Support
ISCG TABS	ISCG05
SEATPOST DIAMETER	31.6mm
MAXIMUM SEATPOST INSERTION	XS 125mm, Small 145mm, Medium 180mm, Large 225mm, XL 260mm
SEAT CLAMP	34.9mm
MAXIMUM CHAINRING	34t
MAXIMUM TIRE	27.5 x 2.8
SAG SETUP	17-19mm [32-35%]
FRAME WEIGHT (Medium with Shock/Axle/Hardware)	9.2 lbs. / 4.17 Kg
WARRANTY	3 YEAR WE GOT YOUR BACK WARRANTY



















YOU HAVE REACHED THE BOTTOM OF TRANSITIONBIKES.COM. IF YOU GET BORED DOWN HERE, [CLICK HERE](#) AND WE CAN TAKE YOU BACK TO THE TOP.