

# TECHNICAL DOCUMENT

FRAME MANUAL / MODEL YEAR 2019 / PAGE 1 OF 4

## SENTINEL CARBON

**TRANSITION**  
BICYCLE COMPANY



# TECHNICAL DOCUMENT

FRAME MANUAL / MODEL YEAR 2019 / PAGE 2 OF 4

# SENTINEL CARBON

**TRANSITION**  
BICYCLE COMPANY

## FRAME SPECS

REAR TRAVEL:	140mm
FRONT TRAVEL:	160mm
FRAME MATERIAL:	Carbon
SIZES:	Small, Medium, Large, XL
COLORS:	Pinot Noir Red, Gun Metal Gray
WARRANTY:	3 year defect warranty/Lifetime crash replacement

## BUILD SPECS

FORK AXLE TO CROWN:	571mm
FORK OFFSET:	42mm (Rockshox) / 44mm (Fox)
REAR SHOCK SIZE:	205mm x 57.5mm
REAR SHOCK HARDWARE:	Trunion Mount Top / 25mm x 8mm Bottom
HEADSET:	44mm Zero Stack (Top) / 56mm Zero Stack (Bottom)
BOTTOM BRACKET:	73mm BSA Threaded
REAR BRAKE:	180mm Post Mount
REAR AXLE:	Syntace X12 148
FRONT DERAILLEUR:	No Support
ISCG TABS:	ISCG05
SEATPOST DIAMETER:	31.6mm
MAXIMUM SEATPOST INSERTION:	Small 190mm, Medium 225mm, Large 245mm, XL 245mm
SEAT CLAMP:	34.9mm
MAXIMUM CHAINRING:	34t
MAXIMUM TIRE:	29 x 2.5
SAG SETUP:	18-20mm

## SHOCK SETUP

Your Transition frame is fully equipped with GiddyUp suspension technology. The custom tuned rear shock is designed to work perfectly in conjunction with the frame's leverage curve to provide superb pedaling performance and downhill small and big bump sensitivity. As a starting point all GiddyUp bikes are recommended to have 32-35% sag. Adjustments like rebound and compression are all personal preference settings that should be adjusted to your personal riding style and preferences. Consult your shock manual for information about how to adjust your rear shock.

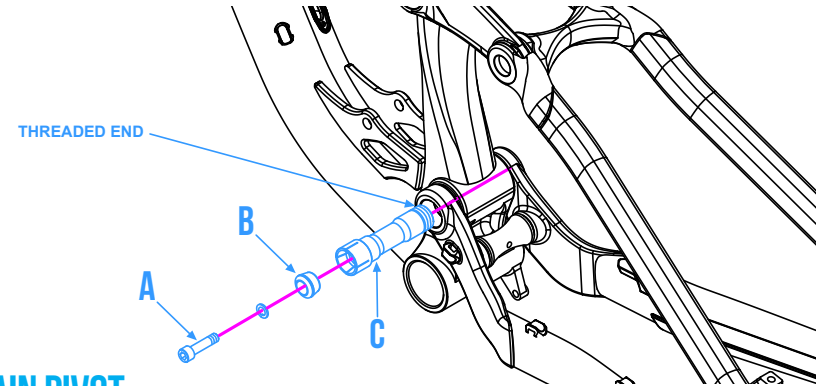
## MAINTENANCE & INSPECTION

It is crucial to the longevity of your Transition frame that you properly maintain and inspect it. We recommend that all service be done by a qualified Transition Bikes dealer.

Before you begin any ride it is very important to inspect your entire frame for any cracks, loose pivots or bolts, and properly functioning bearings. In addition to inspecting your frame, checking your entire bike to make sure it is working properly must happen before every ride. This includes but is not limited to checking tire pressure, ensuring the wheels are secure to the frame and fork, all components and brake bolts are tight and pedals are secure. Also, a quick check of your brake pads and brakes to insure they are working properly and ready to ride. If you are unsure of what you need to check on your bike to make sure it is safe, please bring your bike to a bicycle shop to have them inspect and maintain it before you begin a ride.

## TORQUE SETTINGS

Proper torque ratings for the hardware used on this product are crucial to keeping your frame working in proper order and preventing damage to the frame and pivots during use. Damage caused by over/under torquing will not be covered by the warranty on this product. All torque settings can be found on the exploded frame view on page 3 of this document.



## MAIN PIVOT

The main bottom bracket pivot on your GiddyUp family bike is equipped with a collet style hardware system. This type of pivot requires a two step process to tighten correctly. Step 1. removed the main pivot screw (A) with a 5mm hex wrench, then slide out main pivot taper nut (B). Step 2. With an 8mm hex wrench tighten the main pivot axle (C) clockwise until you reach the specified torque of 19nm. Reinstall the main pivot screw with the taper nut to the specified torque of 10nm. The pressure from the main pivot screw and taper nut will help to maintain correct torque on the main pivot axle and increases the rear end stiffness of your frame.

## BEARINGS

Take apart all the linkage and rocker arms to inspect the bearings to see if they are rotating smoothly. If they do not feel smooth or are seized up, you should replace the affected bearings. Always replace bearings in pairs.

Bottom Bracket Main Pivot Bearings Qty: 2 - 6903-2RS  
Main Rocker Arm Pivot Bearings Qty: 2 - 6902-2RS  
Trunion Top Shock Bearing Qty: 2 - 6900-2RS  
Chainstay Dropout Dual Pivot Bearings Qty: 4 - 6802-2RS  
Seatstay Pivot Bearings Qty: 2 - 3802-2RS

## WARRANTY

Your Transition frame comes with a 3 year manufacturing defect warranty and a lifetime crash replacement policy. This warranty does not cover normal wear and tear to the frame, crashes, miscalculated landings and running into stuff. All those things would be covered by the crash replacement policy. If something bad occurs to your frame that is not covered by the warranty Transition will provide a replacement frame at a killer deal. Our goal is to make sure everyone can keep riding and has a smile on their face.

To be eligible for a warranty you must be the original owner and you must register your frame on the Transition Bikes website under the "Support" button.

For more technical support and information, visit our website and click on the "Support" button or contact us directly at:

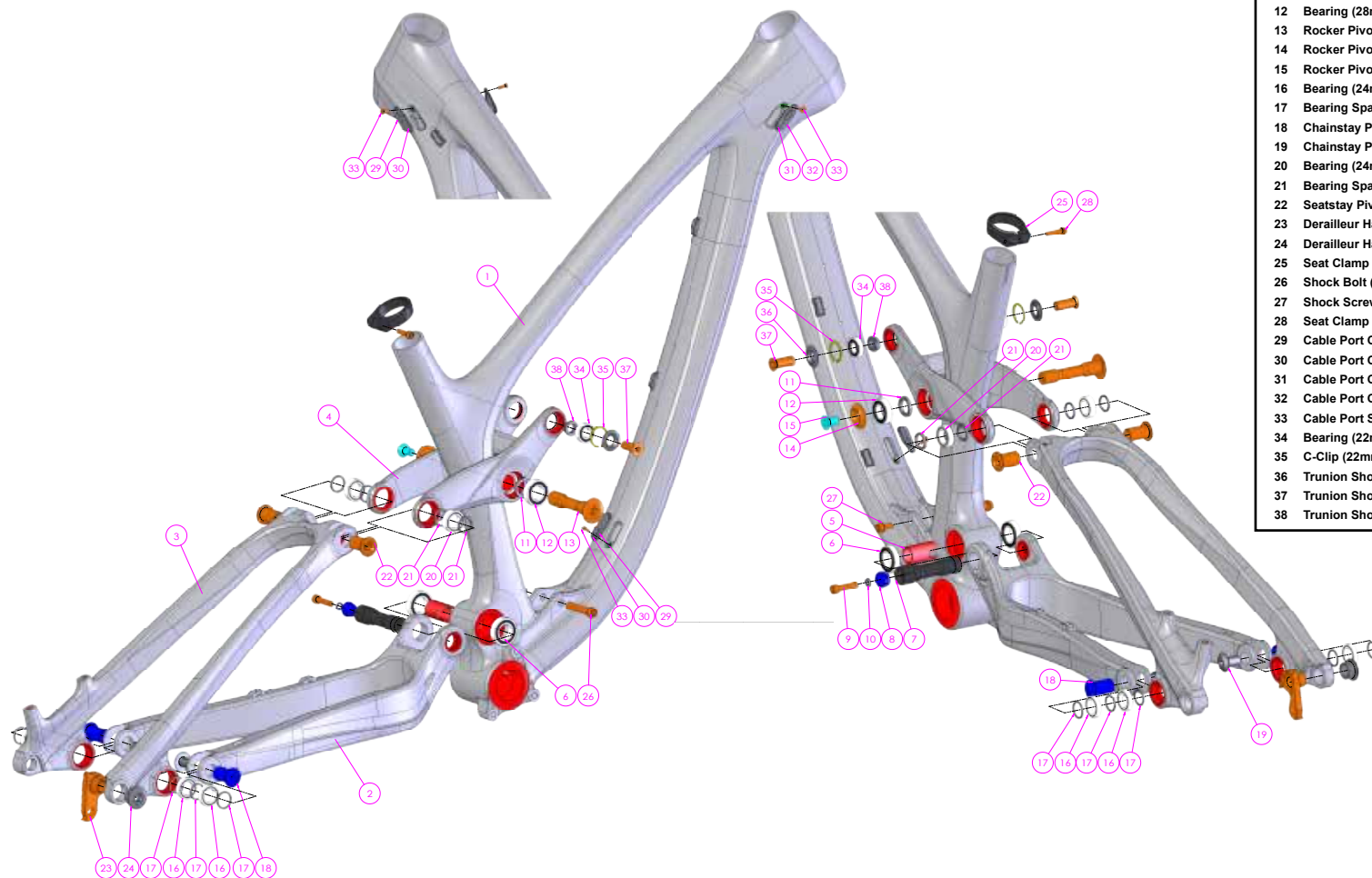
Transition Bikes / 1600 Carolina St. /Bellingham, WA 98226  
info@transitionbikes.com / (360) 366-4960 / www.transitionbikes.com

# TECHNICAL DOCUMENT

FRAME MANUAL / MODEL YEAR 2019 / PAGE 3 OF 4

# SENTINEL CARBON

**TRANSITION**  
BICYCLE COMPANY



Description	QTY	Model Number	Torque Spec
1 Front Triangle	1	TSM01-FT	-
2 Chainstay	1	TSM01-CS	-
3 Seatstay	1	TSM01-SS	-
4 Rocker Link	1	TSM01-LK	-
5 Main Pivot Spacer (17mm x 33mm)	1	TSC-BSP	-
6 Bearing (30mm x 17mm x 7mm)	2	6903-2RS	-
7 Main Pivot Axle (17mm x 74mm)	1	TSC-MAX	19nm
8 Main Pivot Taper Nut	1	A6DA-CCP	-
9 Main Pivot Screw	1	M6x25L-P-S	10nm
10 Main Pivot Spacer	1	6x10x1T	-
11 Bearing Spacer (22mm x 15mm x 3mm)	2	TEDC-BWS	-
12 Bearing (28mm x 15mm x 7mm)	2	6902-2RS	-
13 Rocker Pivot Axle (15mm x 76mm)	1	TSFA-LAX-1	-
14 Rocker Pivot Axle Cap	1	TSFA-LNT-1	-
15 Rocker Pivot Screw	1	M8-16L-M	10nm
16 Bearing (24mm x 15mm x 5mm)	4	6802-2RS	-
17 Bearing Spacer (15mm x 19mm x 2mm)	6	ASEE-LWS	-
18 Chainstay Pivot Axle (15mm x 26mm)	2	ASEE-SAX-26L	-
19 Chainstay Pivot Screw (12mm x 18mm)	2	ASEE-SNT	10nm
20 Bearing (24mm x 15mm x 7mm)	2	3802-2RS	-
21 Bearing Spacer (19mm x 15mm x 2.5mm)	4	TSFA-LWS	-
22 Seatstay Pivot Axle (15mm x 22.5mm)	2	TSFA-SAX	19nm
23 Derailleur Hanger	1	TSFA-HG	-
24 Derailleur Hanger Retention Bolt	1	C7A-ANT-1	19nm
25 Seat Clamp	1	TRA-CLP	-
26 Shock Bolt (8mm x 41mm)	1	TCVC-BT-41L-S	10nm
27 Shock Screw	1	TCVC-M6-S	-
28 Seat Clamp Screw	1	M5-20L-CS	-
29 Cable Port Cover (4mm, Left)	3	TSC-CPA-L (4.0)	-
30 Cable Port Cover (4mm, Right)	3	TSC-CPA-R (4.0)	-
31 Cable Port Cover (5.2mm, Left)	1	TSC-CPB-L (5.2)	-
32 Cable Port Cover (5.2mm, Right)	1	TSC-CPB-R (5.2)	-
33 Cable Port Screw	3	M3x6L-M-S	~1nm
34 Bearing (22mm x 10mm x 6mm)	2	6900-2RS	-
35 C-Clip (22mm)	2	IRTW-22	-
36 Trunion Shock Bolt Washer	2	TSC-SPC	-
37 Trunion Shock Bolt (10mm x 21mm)	2	TSC-TRC	15nm
38 Trunion Shock Spacer (10mm x 6mm)	2	TSC-SWS	-

# TECHNICAL DOCUMENT

FRAME MANUAL / MODEL YEAR 2019 / PAGE 4 OF 4

## SENTINEL CARBON

**TRANSITION**  
BICYCLE COMPANY



	SM	MD	LG	XL
REACH	425	450	475	500
STACK	617	617	626	635
EFFECTIVE TOPTUBE	555	583	611	640
SEATTUBE	360	400	440	490
SEATTUBE ANGLE	77.5	76.8	76.3	75.8
HEADTUBE LENGTH	100	100	110	120
HEADTUBE ANGLE	64	64	64	64
CHANSTAY	435	435	435	435
WHEELBASE	1193	1218	1247	1277
BB DROP	30	30	30	30
OFFSET	43	43	43	43
SL (STEM LENGTH)	40mm	40mm	40mm	40mm