



FRAME SPECS

REAR TRAVEL:	130mm
FRONT TRAVEL:	150mm
FRAME MATERIAL:	6061 Aluminium
SIZES:	X-Small, Small, Medium, Large, X-Large
COLORS:	Habanero Orange, Blackpowder
WARRANTY:	3 year defect warranty/Lifetime crash replacement

BUILD SPECS

FORK AXLE TO CROWN:	542mm
FORK OFFSET:	37mm
REAR SHOCK SIZE:	210mm x 55mm
REAR SHOCK HARDWARE:	30mm x 8mm Top / 25mm x 8mm Bottom
HEADSET:	44mm Zero Stack (Top) / 56mm Zero Stack (Bottom)
BOTTOM BRACKET:	73mm BSA Threaded
REAR BRAKE:	180mm Post Mount
REAR AXLE:	Syntaxe X12 148
FRONT DERAILLEUR:	No Support
ISCG TABS:	ISCG05
SEATPOST DIAMETER:	31.6mm
MAXIMUM SEATPOST INSERTION:	XS 215mm, Small 240mm, Medium 270mm, Large 310mm, XL 355mm
SEAT CLAMP:	34.9mm
MAXIMUM CHAINRING:	34t
MAXIMUM TIRE:	27.5 x 2.8
SAG SETUP:	17-19mm

SHOCK SETUP

Your Transition frame is fully equipped with GiddyUp suspension technology. The custom tuned rear shock is designed to work perfectly in conjunction with the frame's leverage curve to provide superb pedaling performance and downhill small and big bump sensitivity. As a starting point all GiddyUp bikes are recommended to have 33-35% sag. Adjustments like rebound and compression are all personal preference settings that should be adjusted to your personal riding style and preferences. Consult your shock manual for information about how to adjust your rear shock.

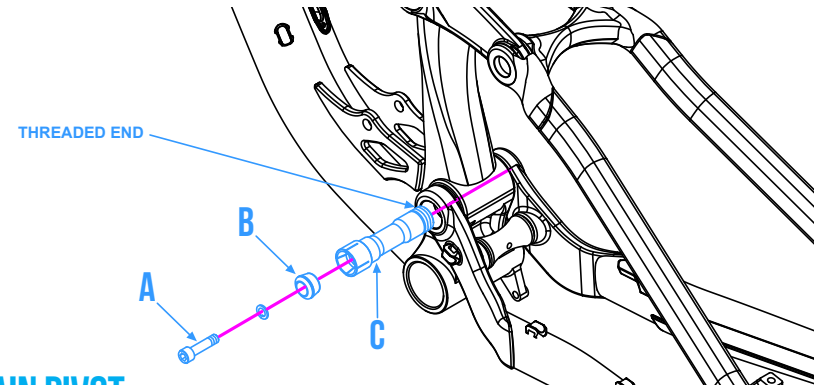
MAINTENANCE & INSPECTION

It is crucial to the longevity of your Transition frame that you properly maintain and inspect it. We recommend that all service be done by a qualified Transition Bikes dealer.

Before you begin any ride it is very important to inspect your entire frame for any cracks, loose pivots or bolts, and properly functioning bearings. In addition to inspecting your frame, checking your entire bike to make sure it is working properly must happen before every ride. This includes but is not limited to checking tire pressure, ensuring the wheels are secure to the frame and fork, all components and brake bolts are tight and pedals are secure. Also, a quick check of your brake pads and brakes to insure they are working properly and ready to ride. If you are unsure of what you need to check on your bike to make sure it is safe, please bring your bike to a bicycle shop to have them inspect and maintain it before you begin a ride.

TORQUE SETTINGS

Proper torque ratings for the hardware used on this product are crucial to keeping your frame working in proper order and preventing damage to the frame and pivots during use. Damage caused by over/under torquing will not be covered by the warranty on this product. All torque settings can be found on the exploded frame view on page 3 of this document.



MAIN PIVOT

The main bottom bracket pivot on your GiddyUp family bike is equipped with a collet style hardware system. This type of pivot requires a two step process to tighten correctly. Step 1. removed the main pivot screw (A) with a 5mm hex wrench, then slide out main pivot taper nut (B). Step 2. With an 8mm hex wrench tighten the main pivot axle (C) clockwise until you reach the specified torque of 19nm. Reinstall the main pivot screw with the taper nut to the specified torque of 10nm. The pressure from the main pivot screw and taper nut will help to maintain correct torque on the main pivot axle and increases the rear end stiffness of your frame.

BEARINGS

Take apart all the linkage and rocker arms to inspect the bearings to see if they are rotating smoothly. If they do not feel smooth or are seized up, you should replace the affected bearings. Always replace bearings in pairs.

Bottom Bracket Main Pivot Bearings Qty: 2 - 6903-2RS
 Main Rocker Arm Pivot Bearings Qty: 2 - 6902-2RS
 Chainstay Dropout Dual Pivot Bearings Qty: 4 - 6802-2RS
 Seatstay Pivot Bearings Qty: 2 - 3802-2RS

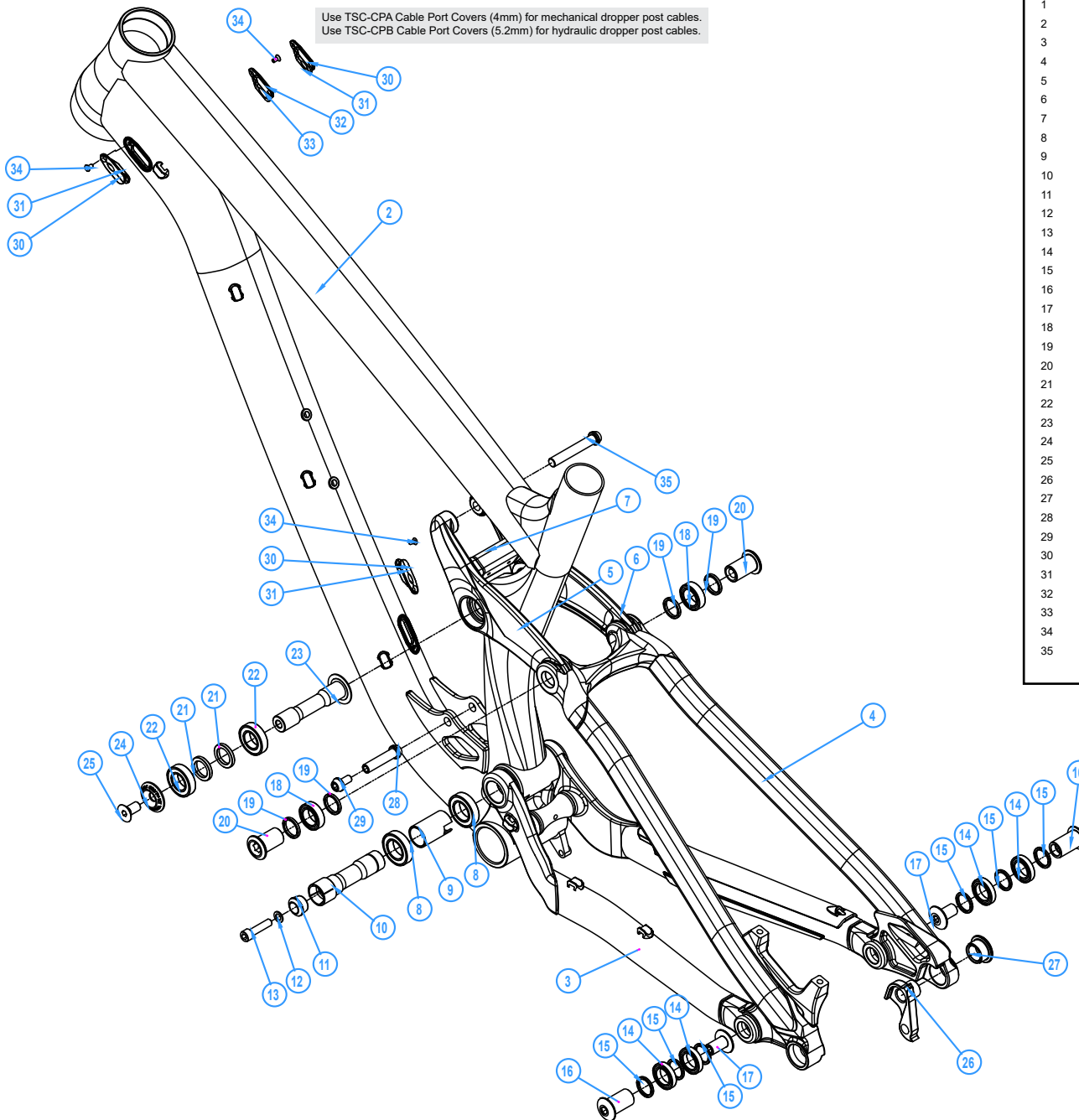
WARRANTY

Your Transition frame comes with a 3 year manufacturing defect warranty and a lifetime crash replacement policy. This warranty does not cover normal wear and tear to the frame, crashes, miscalculated landings and running into stuff. All those things would be covered by the crash replacement policy. If something bad occurs to your frame that is not covered by the warranty Transition will provide a replacement frame at a killer deal. Our goal is to make sure everyone can keep riding and has a smile on their face.

To be eligible for a warranty you must be the original owner and you must register your frame on the Transition Bikes website under the "Support" button.

For more technical support and information, visit our website and click on the "Support" button or contact us directly at:

Transition Bikes / 1600 Carolina St. / Bellingham, WA 98226
 info@transitionbikes.com / (360) 366-4960 / www.transitionbikes.com



Item #	Description	Qty	Model Number	Torque Spec
1	Scout Alloy Frame	1	TSSCE	-
2	Front Triangle	1	TSSCE-FT	-
3	Chainstay	1	TSSCE-CS	-
4	Seatstay	1	TSSCE-SS	-
5	Rocker Link (Left)	1	TSCE-LK-L1	-
6	Rocker Link (Right)	1	TSCE-LK-R	-
7	Rocker Link (Welded Bridge)	1	TSFA-LBG_TSSCE	-
8	Bearing (30mm x 17mm x 7mm)	2	6903-2RS	-
9	Main Pivot Spacer (17mm x 33mm)	1	TSC-BSP	-
10	Main Pivot Axle (17mm x 74mm)	1	TSC-MAX	19nm
11	Main Pivot Taper Nut	1	A6DA-CCP	-
12	Main Pivot Spacer	1	6x10x1T	-
13	Main Pivot Screw	1	M6x25L-P-S	10nm
14	Bearing (24mm x 15mm x 5mm)	4	6802-2RS	-
15	Bearing Spacer (15mm x 19mm x 2mm)	6	ASEE-LWS	-
16	Chainstay Pivot Axle (15mm x 26mm)	2	ASEE-SAX-26L	-
17	Chainstay Pivot Screw (12mm x 18mm)	2	ASEE-SNT	10nm
18	Bearing (24mm x 15mm x 7mm)	2	3802-2RS	-
19	Bearing Spacer (19mm x 15mm x 2.5mm)	4	TSFA-LWS	-
20	Seatstay Pivot Axle (15mm x 22.5mm)	2	TSFA-SAX	19nm
21	Bearing Spacer (22mm x 15mm x 3mm)	2	TEDC-BWS	-
22	Bearing (28mm x 15mm x 7mm)	2	6902-2RS	-
23	Rocker Pivot Axle (15mm x 76mm)	1	TSFA-LAX-1	-
24	Rocker Pivot Axle Cap	1	TSFA-LNT-1	-
25	Rocker Pivot Screw	1	M8-16L-M	10nm
26	Derailleur Hanger	1	TSFA-HG	-
27	Derailleur Hanger Retention Bolt	1	C7A-ANT-1	19nm
28	Shock Bolt (8mm x 34mm)	1	TCVC-BT-34L-S	10nm
29	Shock Screw	1	TCVC-M6-S	-
30	Cable Port Cover (4mm, Left)	3	TSC-CPA-L (4.0)	-
31	Cable Port Cover (4mm, Right)	3	TSC-CPA-R (4.0)	-
32	Cable Port Cover (5.2mm, Left)	1	TSC-CPB-L (5.2)	-
33	Cable Port Cover (5.2mm, Right)	1	TSC-CPB-R (5.2)	-
34	Cable Port Screw	3	M3x6L-M-S	1nm
35	Shock Bolt (8mm x 50mm)	1	TSFA-BT-50L-S	10nm



	XS	SM	MD	LG	XL
REACH	400	425	450	475	500
STACK	589	598	607	617	626
EFFECTIVE TT LENGTH	547	575	603	632	660
SEAT TUBE LENGTH	355	380	410	450	495
EFFECTIVE ST ANGLE	76.6	76.1	75.5	75	74.6
HEAD TUBE LENGTH	100	110	120	130	140
HEAD TUBE ANGLE	65.0	65.0	65.0	65.0	65.0
CHAINSTAY LENGTH	425	425	425	425	425
WHEELBASE	1131	1160	1189	1218	1247
BOTTOM BRACKET DROP	20	20	20	20	20
ESTIMATED BB HEIGHT	335	335	335	335	335
STAND OVER HEIGHT	675	675	685	695	710
FORK OFFSET	37	37	37	37	37