

2016 FRAME MANUAL

TR500

Transition



Congratulations on the purchase of your Transition frame. This manual will give you helpful information on how to develop a long and lasting relationship with your bike.

FRAME SPECS

REAR TRAVEL:	203mm/180mm (8"/7")
FRONT TRAVEL:	203mm (8")
REAR SHOCK:	240mm x 76mm (9.5" x 3") (22.2mm x 8mm eyelets)
FRAME MATERIAL:	6061 Aluminium
SIZES:	Small, Medium, Large, XL
COLORS:	TR Blue Gloss, Stealth Black Matte
WARRANTY:	2 year defect warranty Lifetime crash replacement

BUILD SPECS

SEATPOST/CLAMP:	31.6mm Seatpost/34.9mm Clamp
HEADTUBE:	44mm/56mm Zero Stack
BOTTOM BRACKET:	83mm English Threaded
REAR DROPOUT:	150 x 12mm
FRONT DERAILLEUR:	None
CHAINGUIDE:	ISCG 05
REAR BRAKE:	160mm IS
REAR AXLE:	Transition Alloy
WHEEL SIZE:	26" or 27.5" Adjustable

SHOCK SETUP

The custom tuned rear shock is designed to work perfectly in conjunction with the frame's leverage curve to provide superb pedaling performance and downhill small and big bump sensitivity. As a starting point we recommend to have 30% sag. Adjustments like rebound and compression are all personal preference settings that should be adjusted to your personal riding style and preferences. Consult your shock manual for information about how to adjust your rear shock.

SHOCK COMPATIBILITY

The TR500 is not compatible with the following shocks due to clearance issues with the rocker arm when used in the 200mm (8") travel mode:

Fox Racing Shox Float X2 Air shock
Cane Creek Double Barrel Air

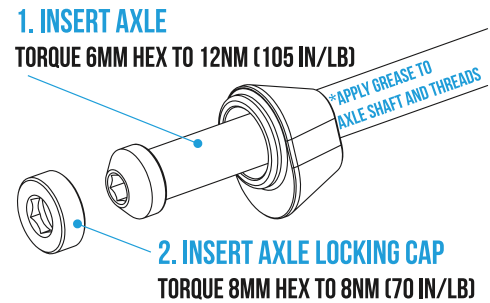
MAINTENANCE & INSPECTION

It is crucial to the longevity of your Transition frame that you properly maintain and inspect it. We recommend that all service be done by a qualified Transition Bikes dealer.

Before you begin any ride it is very important to inspect your entire frame for any cracks, loose pivots or bolts, and properly functioning bearings. In addition to inspecting your frame, checking your entire bike to make sure it is working properly must happen before every ride. This includes but is not limited to checking tire pressure, ensuring the wheels are secure to the frame and fork, all components and brake bolts are tight and pedals are secure. Also, a quick check of your brake pads and brakes to insure they are working properly and ready to ride. If you are unsure of what you need to check on your bike to make sure it is safe, please bring your bike to a bicycle shop to have them inspect and maintain it before you begin a ride.

REAR AXLE

The rear axle on the TR500 is a two step process to tightening and removing the axle. Follow the below instructions to tighten and to remove do the procedure in reverse order by removing the axle locking cap first then remove the axle.



BEARINGS

Take apart all the linkage and rocker arms to inspect the bearings to see if they are rotating smoothly. If they do not feel smooth or are seized up, you should replace the affected bearings. Always replace bearings in pairs.

Rocker Arm & Dog Bone Pivot Bearings Qty: 6 - 6902
Bottom Bracket Pivot Bearings Qty: 2 - 6003

TORQUE SETTINGS

Proper torque ratings for the hardware used on this product are crucial to keeping your frame working in proper order and preventing damage to the frame and pivots during use. Damage caused by over/under torquing will not be covered by the warranty on this product. All torque settings can be found on the exploded frame view on page 3 of this document.

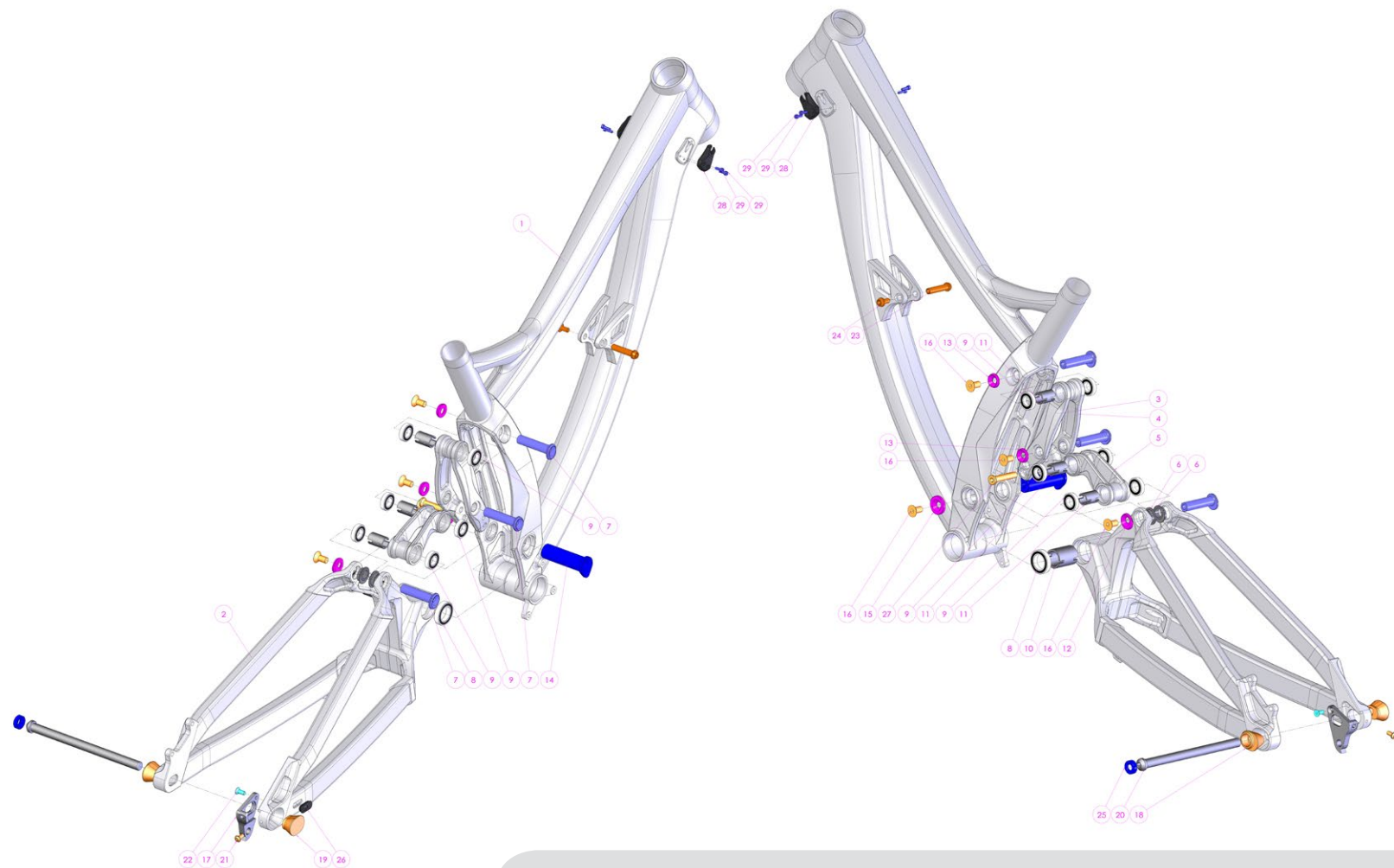
WARRANTY

Your Transition frame comes with a 2 year manufacturing defect warranty and a lifetime crash replacement policy. This warranty does not cover normal wear and tear to the frame, crashes, miscalculated landings and running into stuff. All those things would be covered by the crash replacement policy. If something bad occurs to your frame that is not covered by the warranty Transition will provide a replacement frame at a killer deal. Our goal is to make sure everyone can keep riding and has a smile on their face.

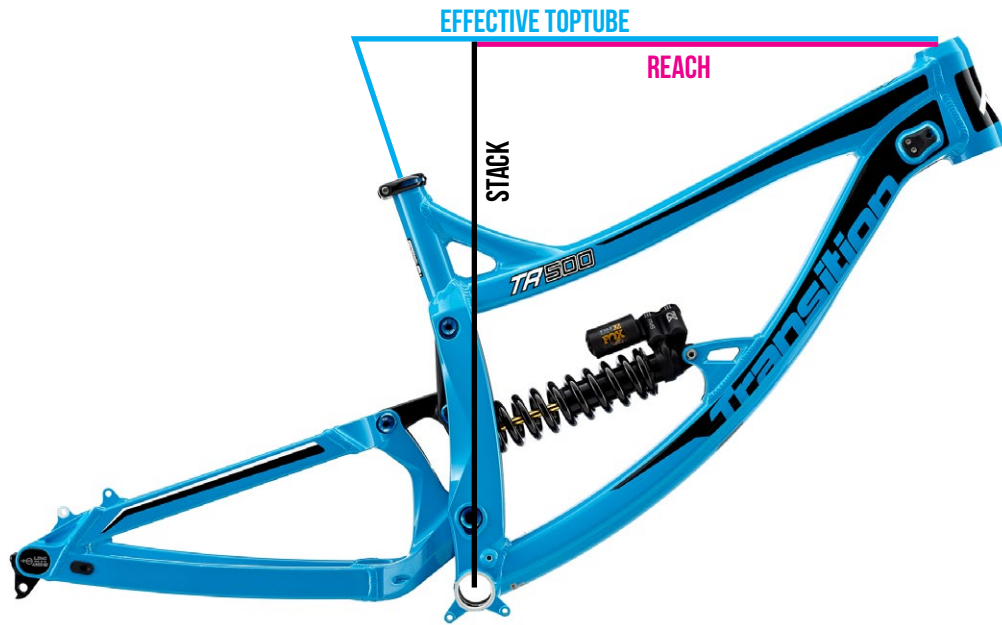
To be eligible for a warranty you must be the original owner and you must register your frame on the Transition Bikes website under the "Support" button.

For more technical support and information, visit our website and click on the "Support" button or contact us directly at:

Transition Bikes / 1600 Carolina St. / Bellingham, WA 98226
info@transitionbikes.com / (360) 366-4960 / www.transitionbikes.com



Item #	Description	QTY	Model Number	Torque Spec
1	Front Triangle	1	TSTRH-FT	-
2	Swingarm	1	TSTRH-RT	-
3	Rocker Link Left (Welded)	1	TSTRH-LK-L	-
4	Rocker Link Right (Welded)	1	TSTRH-LK-R	-
5	Dogbone Link	1	TSTRH-RLK	-
6	Geo Adjust Chip	2	TSTRH-SWS	-
7	Linkage Pivot Axle (12mm x 55mm)	3	TSRH-LAX	-
8	Bearing (32mm x 20mm x 7mm)	2	6804-2RS-MAX	-
9	Bearing (24mm x 12mm x 6mm)	6	6901-2RS	-
10	Main Pivot Spacer (20mm x 34mm)	1	TSRH-MWS	-
11	Linkage Pivot Spacer (12mm x 24mm)	3	TSRH-LWS	-
12	Linkage Axle Cap (Adjustable Position)	1	TSRH-LCP	-
13	Linkage Axle Cap (Fixed Position)	2	TSRH-TCP	-
14	Main Pivot Axle (20mm x 68mm)	1	TSRH-MAX	-
15	Main Pivot Axle Cap	1	TSRH-MCP	-
16	Pivot Screw Bolt	4	M8 x 16L-M	10nm
17	Derailleur Hanger	1	TSRH-HG	-
18	Dropout Adjust Chip (Left)	1	TSRH-EIT-L1	-
19	Dropout Adjust Chip (Right)	1	TSRH-EIT-R1	-
20	Rear Axle	1	TSRH-HAX	14nm
21	Rear Derailleur Hanger Mounting Screw	1	M5 x 10L-R	3nm
22	Inside Derailleur Hanger Mounting Screw	1	M5 x 10L-M	3nm
23	Front Shock Bolt	1	TCVC-BT-34L-S	10nm
24	Front Shock Screw	1	TCVC-M6-S	10nm
25	Axle Cap	1	TSRH-ENT	19nm
26	Cable Grommet	1	TCBC-CGR	-
27	Rocker Shock Bolt	1	TSRH-SBT	10nm
28	Fork Bumper	2	TSRH-BMP	-
29	Fork Bumper Mounting Screw	4	M3 x 10L-P-S	2nm



GEOMETRY

	SM	MD	LG	XL
Reach	367	390	419	445
Stack	591	591	591	591
Effective TopTube	557	582	608	633
SeatTube	420	420	420	420
SeatTube Angle	72.6	72.6	72.6	72.6
HeadTube Length	122	122	122	122
HeadTube Angle	63	63	63	63
Chainstay	442	442	442	442
Wheelbase	1154	1180	1205	1230
BB Drop	-4	-4	-4	-4